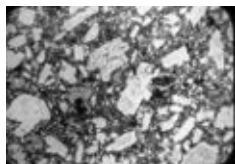


1936 Royal Society Expedition to Montserrat - The Archibald Gordon MacGregor Archive - Specimens

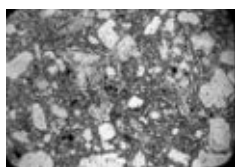
From Earthwise

[Jump to navigation](#) [Jump to search](#)

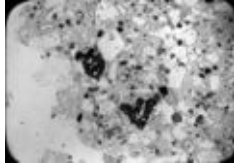
Specimens collected on the Royal Society Expedition to Montserrat and held in the British Geological Survey collections



GS Photo
M.2041. Olivine-
bearing andesite
(or Basalt?).
Coast about 500
yards west of
Shoe Rock.



GS Photo
M.2043.
Pyroxene
andesite, north
side of road,
1200 yards N 33
deg E of
Paradise.



GS Photo
M.2042.
Hornblende-
pyroxenite
dacite. Coast
between
Triangle Rock
Point and
Landing Bay.

Specimen number	Description	Collector's number
MR 15583	Black sand, Montserrat, West Indies Fox Bay, Montserrat.	none : none c 1936
MR 15584	Normal sand Montserrat, West Indies Fox Bay, Montserrat	none : none c 1936
MR 15585	Volcanic bomb Montserrat, West Indies E side Mule River, Ogarras, Montserrat	none : none c 1936
MR 15586	Volcanic bomb Montserrat, West Indies E side Mule River, Ogarras, Montserrat	none : none c 1936
MR 16425	Stalagmite formed around ?lianas at hot spring Montserrat, West Indies Tar River, 50 yds downstream from Ronthis path, Soufrière Hills Volcano, Montserrat	M (1936) : 9A 1937
MR 16426	Stalagmite deposit coating wall of agglomerate Montserrat, West Indies Tar River, Soufrière Hills Volcano, Montserrat (1936)	M : 10 1937
MR 16427	Nuée Ardente sand and dust Montserrat, West Indies Gorge leading from Plymouth to Gages (Fort Ghaut), Soufrière Hills Volcano, Montserrat (1936)	M : 15 1937
MR 16428	Nuée Ardente sand and dust Montserrat, West Indies Gorge leading from Plymouth to Gages (Fort Ghaut), Soufrière Hills Volcano, Montserrat (1936)	M : 20 1937
MR 16429	Semi-consolidated volcanic sand Montserrat, West Indies Gorge leading from Plymouth to Gages (Fort Ghaut), Soufrière Hills Volcano, Montserrat (1936)	M : 26 1937
MR 16430	Flow-banded porous bandaite Montserrat, West Indies Gorge leading from Plymouth to Gages (Fort Ghaut), Soufrière Hills Volcano, Montserrat (1936)	M : 30 1937
MR 16431	Junction between pale and dark grey hornblende-pyroxene bandaite Montserrat, West Indies Spring or Kinsale Ghaut, Soufrière Hills Volcano, Montserrat (1936)	M : 37 1937
MR 16432	Thermally metamorphosed calcareous sediment Montserrat, West Indies Spring or Kinsale Ghaut, Soufrière Hills Volcano, Montserrat (1936)	M : 43 1937

MR 16433	Pyroxene bandaite Montserrat, West Indies Summit of Silver Hill, Montserrat (1936)	M : 66 1937
MR 16434	Bandaite explosion breccia Montserrat, West Indies Southern spur of Silver Hill, Montserrat (1936)	M : 67 1937
MR 16435	Bandaite explosion breccia Montserrat, West Indies Southern spur of Silver Hill, Montserrat (1936)	M : 68 1937
MR 16436	Bandaite explosion breccia (weathered surface) Montserrat, West Indies Southern spur of Silver Hill, Montserrat (1936)	M : 70 1937
MR 16437	Bandaite agglomerate matrix (weathered surface) Montserrat, West Indies Path from Blake's to Trant's, Centre Hills, Montserrat (1936)	M : 77 1937
MR 16438	Porous glassy hornblendic xenolith in hornblende pyroxene bandaite Montserrat, West Indies Field between Galway's and White River Ghaut, Soufrière Hills Volcano, Montserrat (1936)	M : 80A 1937
MR 16439	black and interstratified paler tuffs Montserrat, West Indies NE of Old Fort Point, South Soufrière Hills Volcano, Montserrat (1936)	M : 101 1937
MR 16440	Hornblende pyroxene bandaite Montserrat, West Indies NE of Old Fort Point, South Soufrière Hills Volcano, Montserrat (1936)	M : 103 1937
MR 16441	Olivine basalt Montserrat, West Indies Waterfall near O'Garras, South Soufrière Hills Volcano, Montserrat (1936)	M : 110 1937
MR 16442	Olivine basalt Montserrat, West Indies Cliff behind O'Garras, South Soufrière Hills Volcano, Montserrat (1936)	M : 119 1937
MR 16443	Slag - top of olivine basalt flow Montserrat, West Indies Cliff behind O'Garras, South Soufrière Hills Volcano, Montserrat (1936)	M : 123 1937
MR 16444	Clinkery slag - top of olivine basalt flow Montserrat, West Indies Cliff behind O'Garras, South Soufrière Hills Volcano, Montserrat (1936)	M : 124 1937
MR 16445	Basaltic lava Montserrat, West Indies W of Shoe Rock, South Soufrière Hills Volcano, Montserrat (1936)	M : 125 1937
MR 16446	Slag of basaltic lava Montserrat, West Indies W of Shoe Rock, South Soufrière Hills Volcano, Montserrat (1936)	M : 126 c 1937
MR 16447	Olivine basalt Montserrat, West Indies W of Shoe Rock, South Soufrière Hills Volcano, Montserrat (1936)	M : 130 c 1937
MR 16448	Basalt lava with glassy incrustation Montserrat, West Indies Between Shoe Rock Point and Triangle Rock point, South Soufrière Hills Volcano, Montserrat (1936)	M : 132 c 1937
MR 16449	Dark grey basalt Montserrat, West Indies Between Shoe Rock Point and Triangle Rock point, South Soufrière Hills Volcano, Montserrat (1936)	M : 133 c 1937
MR 16450	Slag from basalt Montserrat, West Indies Between Shoe Rock Point and Triangle Rock point, South Soufrière Hills Volcano, Montserrat (1936)	M : 134 c 1937
MR 16451	Acid hornblende pyroxene bandaite Montserrat, West Indies Between Triangle Rock point and Ladies Bay, South Soufrière Hills Volcano, Montserrat (1936)	M : 139 c 1937
MR 16452	Acid hornblende pyroxene bandaite with cognate xenolith Montserrat, West Indies Between Triangle Rock point and Ladies Bay, South Soufrière Hills Volcano, Montserrat (1936)	M : 141 c 1937

MR 16453	Chilled olivine basalt Montserrat, West Indies Shore 335 yds NE of Sweeny's Well, South Soufrière Hills Volcano, Montserrat	M (1936) : 155 c 1937
MR 16454	Basaltic lava Montserrat, West Indies Shore 465 yds NE of Sweeny's Well, South Soufrière Hills Volcano, Montserrat	M (1936) : 158 c 1937
MR 16455	Reddish feldspar porphyritic olivine basalt lava Montserrat, West Indies Coast at Roche Bluff, South Soufrière Hills Volcano, Montserrat (1936)	M : 160 c 1937
MR 16456	White bandaite pumice Montserrat, West Indies Sweeny's Well, South Soufrière Hills Volcano, Montserrat (1936)	M : 180 c 1937
MR 16457	Fine grained basic pyroxene andesite lava Montserrat, West Indies Sweeny's Well, South Soufrière Hills Volcano, Montserrat (1936)	M : 182 c 1937
MR 16458	Banded pyroxene bandaite Montserrat, West Indies NE of Paradise, Centre Hills, Montserrat (1936)	M : 207 c 1937
MR 16459	Pyroxene bandaite with olivine Montserrat, West Indies NE of Paradise, Centre Hills, Montserrat (1936)	M : 215A c 1937
MR 16460	Hornblende pyroxene bandaite Montserrat, West Indies SW of the Tar River Estate buildings, Montserrat (1936)	M : 217 c 1937
MR 16461	Hornblende pyroxene bandaite Montserrat, West Indies Hill 2600 at head of Cold River, Montserrat (1936)	M : 222 c 1937
MR 16462	Pyroxene bandaite with olivine traces Montserrat, West Indies NW of Tuit's, Centre Hills Volcano, Montserrat (1936)	M : 228 c 1937
MR 16463	Pyroxene bandaite with olivine and cognate xenoliths Montserrat, West Indies SW of Trant's, Centre Hills Volcano, Montserrat (1936)	M : 231A c 1937
MR 16464	Purplish pyroxene bandaite Montserrat, West Indies NW of Bethel, Centre Hills Volcano, Montserrat (1936)	M : 234 c 1937
MR 16465	Greenish pyroxene bandaite Montserrat, West Indies SW of Trant's, Centre Hills Volcano, Montserrat (1936)	M : 236 c 1937
MR 16466	Pale hornblende pyroxene bandaite, Soufrière Hills type Montserrat, West Indies Top of St George's Hill, near Point 1164, Montserrat (1936)	M : 243 c 1937
MR 16467	Purplish pyroxene bandaite Montserrat, West Indies Top of St George's Hill, near Point 1164, Montserrat (1936)	M : 245 c 1937
MR 16468	White bandaite pumice Montserrat, West Indies East flank of St George's Hill, near Point 1164, Montserrat (1936)	M : 248 c 1937
MR 16469	Not recorded Montserrat, West Indies NE of Bransby, Montserrat (1936)	M : 251 c 1937
MR 16470	Pyroxene bandaite Montserrat, West Indies Garibaldi Hill, NW of Bransby, Montserrat (1936)	M : 253 c 1937
MR 16471	Pyroxene bandaite Montserrat, West Indies Garibaldi Hill, NW of Bransby, Montserrat (1936)	M : 256 c 1937
MR 16472	Pyroxene bandaite Montserrat, West Indies N side of Bransby Point, Garibaldi Hill Volcano, Montserrat (1936)	M : 263 c 1937
MR 16473	Glassy flow-banded pyroxene bandaite with minor hornblende Montserrat, West Indies E of Bransby, Montserrat (1936)	M : 266 c 1937
MR 16474	Hornblende pyroxene bandaite Montserrat, West Indies Gages Lower Soufrière Gulley, Soufrière Hills Volcano, Montserrat (1936)	M : 268 c 1937

MR 16475	Altered tuff Montserrat, West Indies Gages Lower Soufrière, Soufrière Hills Volcano, Montserrat (1936)	M : 269 c 1937
MR 16476	Altered tuff with less altered nucleus Montserrat, West Indies Gages Lower Soufrière, Soufrière Hills Volcano, Montserrat (1936)	M : 270 c 1937
MR 16477	Sulphur in altered matrix Montserrat, West Indies Gages Lower Soufrière, Soufrière Hills Volcano, Montserrat (1936)	M : 275 c 1937
MR 16478	Porous flow-banded hornblende pyroxene bandaite Montserrat, West Indies Between Spring Ghaut and Gages Soufrière Ghaut, Montserrat (1936)	M : 278 c 1937
MR 16479	Pyroxene bandaite Montserrat, West Indies N of Lee's, Centre Hills Volcano, Montserrat (1936)	M : 283 c 1937
MR 16480	Pale bandaite Montserrat, West Indies Hope Ghaut, Centre Hills Volcano, Montserrat (1936)	M : 291 c 1937
MR 16481	Matrix of bandaite agglomerate Montserrat, West Indies S of St Peter's Church, Centre Hills Volcano, Montserrat (1936)	M : 300 c 1937
MR 16482	Flow-banded pyroxene bandaite with minor hornblende Montserrat, West Indies Between Sweeney's and Cars Bay, Centre Hills Volcano, Montserrat (1936)	M : 308 c 1937
MR 16483	Glassy flow-banded pyroxene bandaite with minor hornblende Montserrat, West Indies Between Sweeney's and Cars Bay, Centre Hills Volcano, Montserrat (1936)	M : 311A c 1937
MR 16484	Dusty matrix of Nuée Ardente agglomerate Montserrat, West Indies N of Tuit's, Centre Hills Volcano, Montserrat (1936)	M : 332 c 1937
MR 16485	Hornblende pyroxene bandaite breadcrust bomb Montserrat, West Indies N of Tuit's, Centre Hills Volcano, Montserrat (1936)	M : 333 c 1937
MR 16486	Hornblende pyroxene bandaite - highly porous Montserrat, West Indies SE of Tuit's, Centre Hills Volcano, Montserrat (1936)	M : 336 c 1937
MR 16487	Hornblende pyroxene bandaite Montserrat, West Indies SE of Tuit's, Centre Hills Volcano, Montserrat (1936)	M : 337 c 1937
MR 16488	Loose rusty olivine basalt clinker from lava Montserrat, West Indies O'Garra's, South Soufrière Hills Volcano, Montserrat (1936)	M : 343 c 1937
MR 16489	Hornblende pyroxene bandaite Montserrat, West Indies SW of Reid's Hill, South Soufrière Hills Volcano, Montserrat (1936)	M : 345 c 1937
MR 16490	Nuée Ardente dust deposit Montserrat, West Indies SW of Reid's Hill, South Soufrière Hills Volcano, Montserrat (1936)	M : 347 c 1937
MR 16491	Pyroxene bandaite Montserrat, West Indies NW Bluff, W of Î630	M : 357 c 1937
MR 16492	Gypsum from area of old Soufrière activity Montserrat, West Indies NW Bluff, W of Î630, Siver Hill Volcano	M : 360 c 1937
MR 16493	Hornblende pyroxene bandaite, altered Montserrat, West Indies 1500 yds N40°E of Waterworks, Centre Hills, Montserrat (1936)	M : 374 c 1937
MR 16494	Hornblende pyroxene bandaite, altered Montserrat, West Indies 1500 yds N40°E of Waterworks, Centre Hills, Montserrat (1936)	M : 377 c 1937
MR 16495	Fine grained tuff or volcanic sand Montserrat, West Indies 900 yds N30°E of Waterworks, Centre Hills, Montserrat (1936)	M : 378 c 1937
MR 16496	Fine grained foliated granite Montserrat, West Indies Cobble beach near O'Garras, South Soufrière Hills Volcano, Montserrat (1936)	M : 380 c 1937

MR 16497	Sulphur Montserrat, West Indies Cow Hill, Soufrière, Soufrière Hills Volcano, Montserrat (1936)	M : 381 c 1937
MR 16498	Not recorded Nevis, Leeward Islands, West Island of Nevis, Leeward Islands	M : 383 c 1937
MR 16499	Not recorded Nevis, Leeward Islands, West Island of Nevis, Leeward Islands	M : 384 c 1937
MR 16500	Pyroxene bandaite with minor hornblende Martinique, French West Old Pelé dome, Martinique	P : 1 c 1937
MR 16501	Pyroxene bandaite with minor hornblende Martinique, French West New Pelé dome, Martinique	P : 3 c 1937
MR 16502	Porous bandaite Martinique, French West Avalanche Valley, Martinique	P : 7 c 1937
MR 16503	Broken glassy crust of breadcrust bomb Martinique, French West Avalanche Valley, Martinique	P : 8 c 1937
MR 16504	Porous bandaite Martinique, French West Avalanche Valley, Martinique	P : 9 c 1937
MR 16505	Porous bandaite Martinique, French West Avalanche Valley, Martinique	P : 11 c 1937
MR 16506	Porous bandaite Martinique, French West Avalanche Valley, Martinique	P : 13 c 1937
MR 16507	Porous bandaite Martinique, French West Avalanche Valley, Martinique	P : 15 c 1937
MR 16508	Fine dust of Nuée Ardente deposits Martinique, French West Avalanche Valley, Martinique	P : 17 c 1937

Retrieved from

http://earthwise.bgs.ac.uk/index.php?title=1936_Royal_Society_Expedition_to_Montserrat_-_The_Archibald_Gordon_MacGregor_Archive_-_Specimens&oldid=46356

Category:

- [1936 Royal Society Expedition to Montserrat](#)

Navigation menu

Personal tools

- Not logged in
- [Talk](#)
- [Contributions](#)
- [Log in](#)
- [Request account](#)

Namespaces

- [Page](#)
- [Discussion](#)

Variants

Views

- [Read](#)
- [Edit](#)
- [View history](#)
- [PDF Export](#)

More

Search

Navigation

- [Main page](#)
- [Recent changes](#)
- [Random page](#)
- [Help about MediaWiki](#)

Tools

- [What links here](#)
- [Related changes](#)
- [Special pages](#)
- [Permanent link](#)
- [Page information](#)
- [Cite this page](#)
- [Browse properties](#)

• This page was last modified on 24 June 2020, at 09:20.

- [Privacy policy](#)
- [About Earthwise](#)
- [Disclaimers](#)

•



•

