

Climate of Central African Republic

From Earthwise

[Jump to navigation](#) [Jump to search](#)

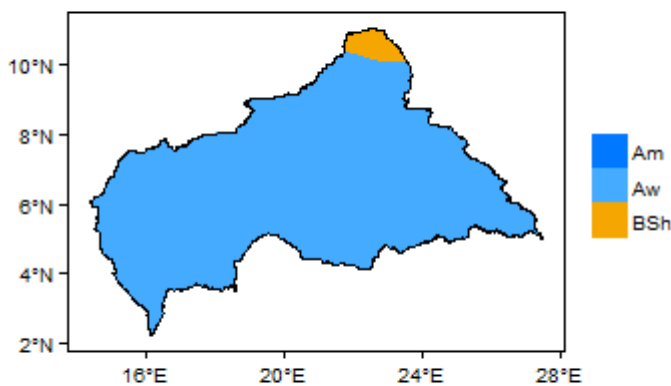
[Africa Groundwater Atlas](#) >> [Hydrogeology by country](#) >> [Hydrogeology of Central African Republic](#) >> Climate of Central African Republic

[L'Atlas de l'eau souterraine en Afrique](#) >> [Hydrogéologie par pays](#) >> [Hydrogéologie de la République centrafricaine](#) >> Climat de la République centrafricaine

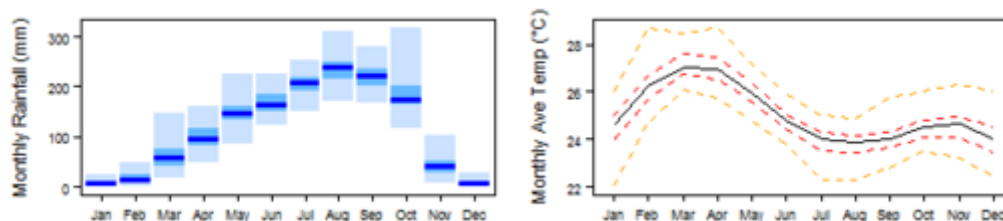
Climate zones / Zones climatiques

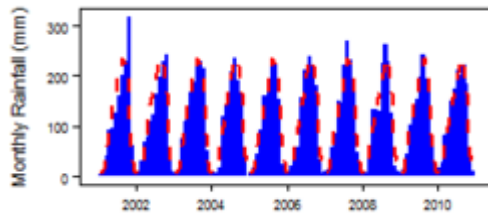
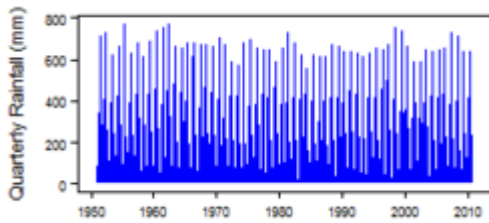
These maps and graphs were developed from the CRU TS 3.21 dataset produced by the Climatic Research Unit at the University of East Anglia, UK. For more information see the [climate resource page](#).

Ces cartes et graphiques ont été développés à partir de l'ensemble de données CRU TS 3.21 produit par l'Unité de recherche climatique à l'Université de East Anglia, au Royaume-Uni. Pour plus d'informations, consultez [la page de la ressource climatique](#) (en anglais).

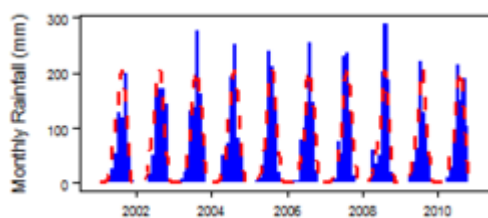
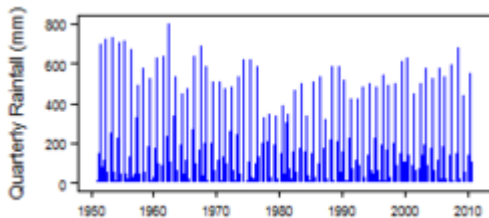
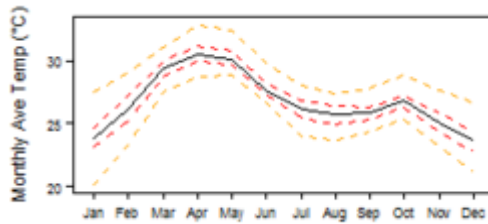
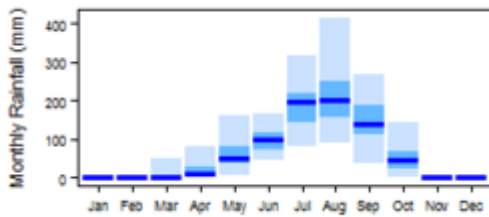


Climate for Aw region (Tropical Savannah / Savane Tropicale)





Climate for BSh region (Arid Steppe (Hot) / Steppe Aride (Chaud))



Retrieved from

http://earthwise.bgs.ac.uk/index.php?title=Climate_of_Central_African_Republic&oldid=38656

Categories:

- [Africa Groundwater Atlas](#)
- [Climate](#)

Navigation menu

Personal tools

- Not logged in
- [Talk](#)
- [Contributions](#)
- [Log in](#)
- [Request account](#)

Namespaces

- [Page](#)
- [Discussion](#)

Variants

Views

- [Read](#)
- [Edit](#)
- [View history](#)
- [PDF Export](#)



More

Search

Navigation

- [Main page](#)
- [Recent changes](#)
- [Random page](#)
- [Help about MediaWiki](#)

Tools

- [What links here](#)
- [Related changes](#)
- [Special pages](#)
- [Permanent link](#)
- [Page information](#)
- [Cite this page](#)
- [Browse properties](#)

• This page was last modified on 6 December 2018, at 18:39.

- [Privacy policy](#)
- [About Earthwise](#)
- [Disclaimers](#)

