

Climate of Madagascar

From Earthwise

[Jump to navigation](#) [Jump to search](#)

[Africa Groundwater Atlas](#) >> [Hydrogeology by country](#) >> [Hydrogeology of Madagascar](#) >>
Climate of Madagascar

[L'Atlas de l'eau souterraine en Afrique](#) >> [Hydrogéologie par pays](#) >> [Hydrogéologie de Madagascar](#) >> Climat de Madagascar

□

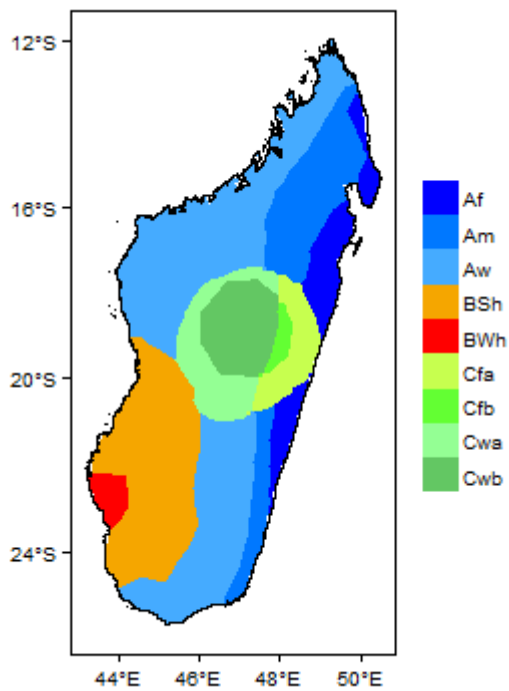
Contents

- [1 Climate zones](#)
 - [1.1 Climate for Af region \(Tropical Rainforest / Pluie de Forêt Tropicale\)](#)
 - [1.2 Climate for Am region \(Tropical Monsoon / Mousson Tropicale\)](#)
 - [1.3 Climate for Aw region \(Tropical Savannah / Savane Tropicale\)](#)
 - [1.4 Climate for BSh region \(Arid Steppe \(hot\) / Steppe Aride \(chaude\) \)](#)
 - [1.5 Climate for BWh region \(Arid Desert \(hot\) / Désert aride \(chaud\) \)](#)
 - [1.6 Climate for Cfa region \(Temperate without dry season \(hot summer\) / Tempéré sans saison sèche \(été très chaud\) \)](#)
 - [1.7 Climate for Cfb region \(Temperate without dry season \(warm summer\) / Tempéré sans saison sèche \(été chaud\) \)](#)
 - [1.8 Climate for Cwa region \(Temperate with dry winter \(hot summer\) / Tempéré avec hiver sec \(été très chaud\)\)](#)
 - [1.9 Climate for Cwb region \(Temperate with dry winter \(warm summer\) / \(Tempéré avec hiver sec \(été chaud\) \)](#)

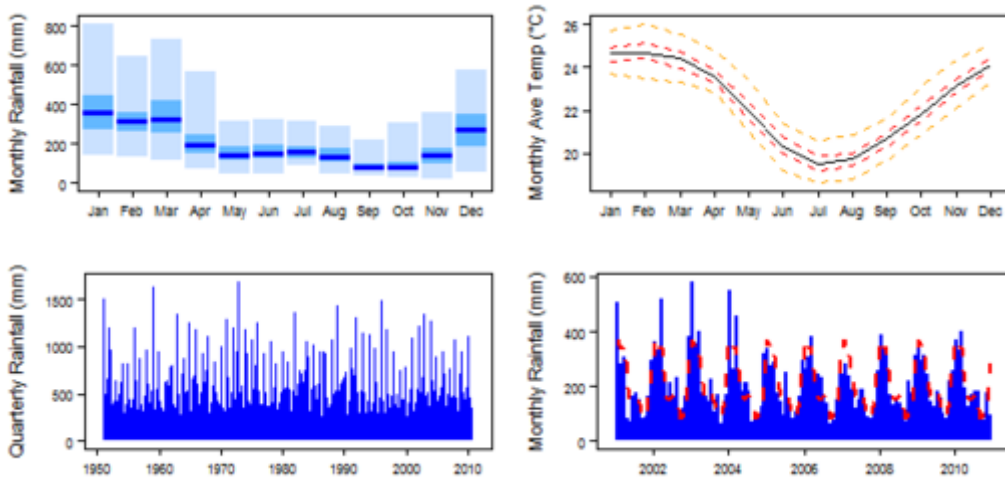
Climate zones

These maps and graphs were developed from the CRU TS 3.21 dataset produced by the Climatic Research Unit at the University of East Anglia, UK. For more information see the [climate resource page](#).

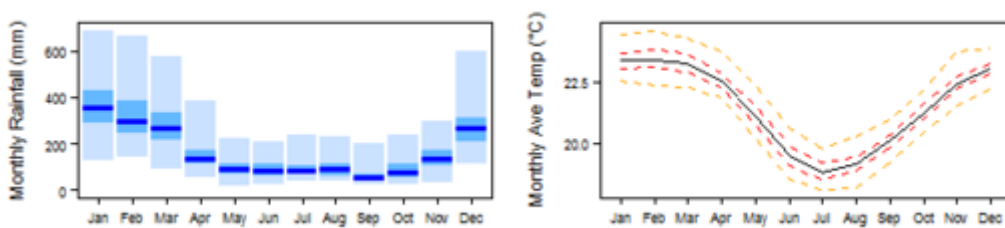
Ces cartes et graphiques ont été développés à partir de l'ensemble de données CRU TS 3.21 produit par l'Unité de recherche climatique à l'Université de East Anglia, au Royaume-Uni. Pour plus d'informations, consultez [la page de la ressource climatique](#) (en anglais).

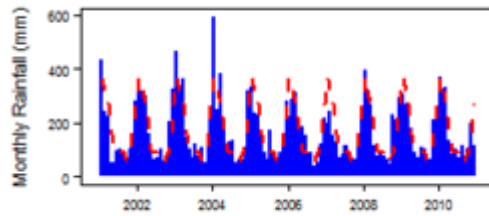
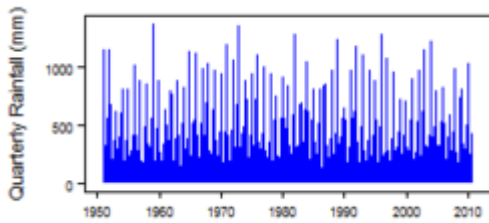


Climate for Af region (Tropical Rainforest / Pluie de Forêt Tropicale)

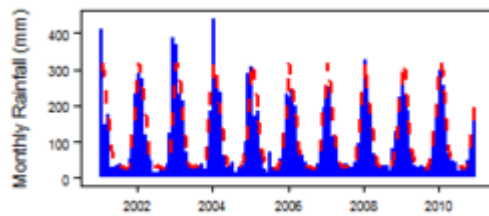
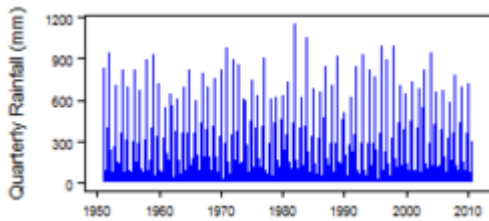
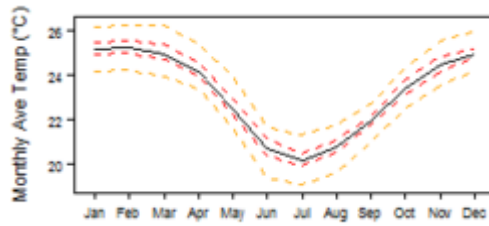
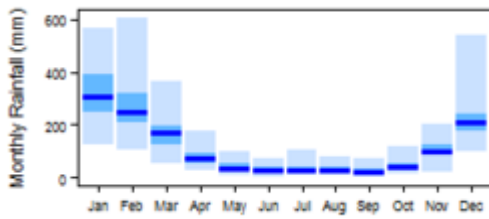


Climate for Am region (Tropical Monsoon / Mousson Tropicale)

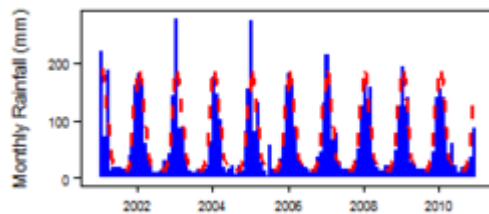
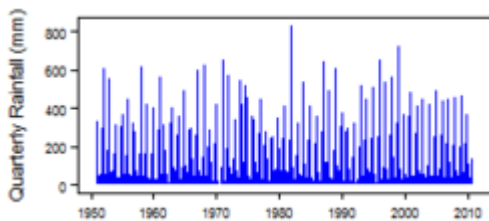
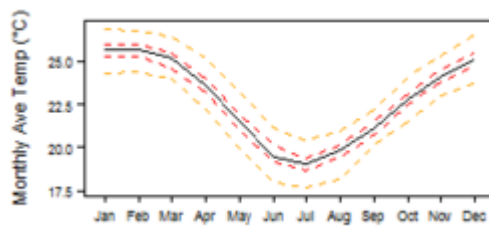
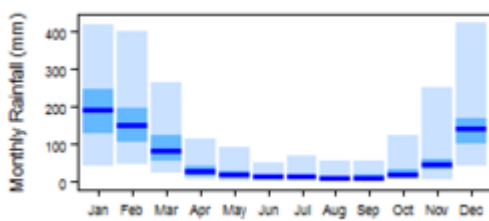




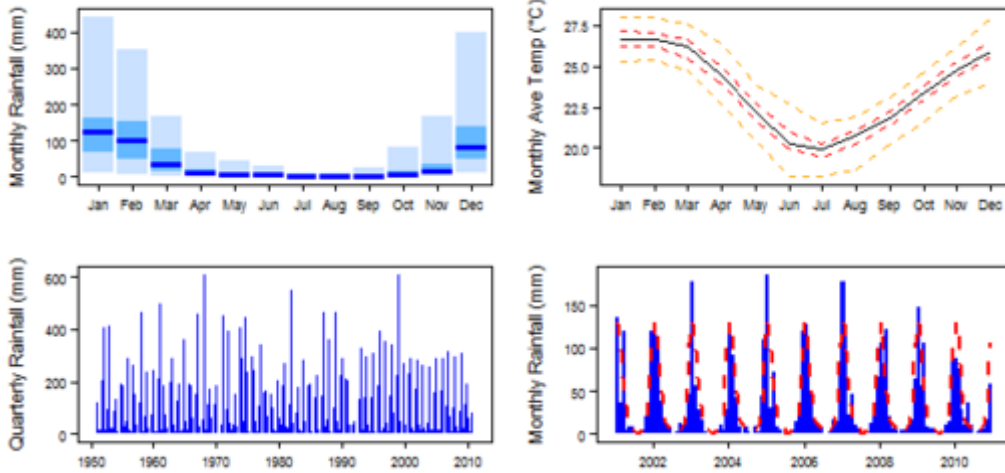
Climate for Aw region (Tropical Savannah / Savane Tropicale)



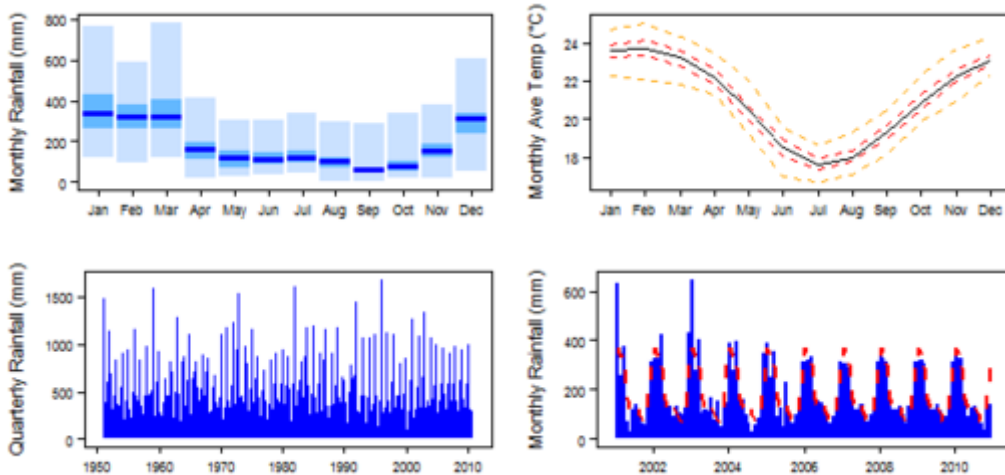
Climate for BSh region (Arid Steppe (hot) / Steppe Aride (chaude))



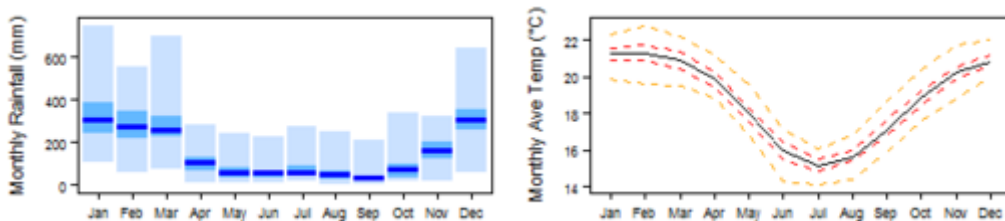
Climate for BWh region (Arid Desert (hot) / Désert aride (chaud))

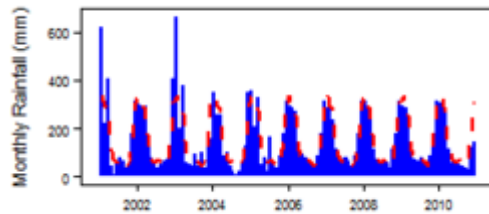
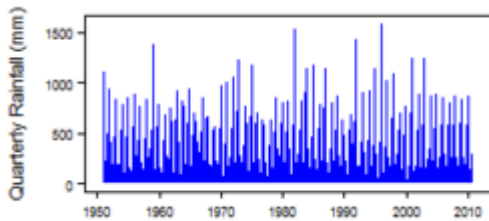


**Climate for Cfa region (Temperate without dry season (hot summer) /
Tempéré sans saison sèche (été très chaud))**

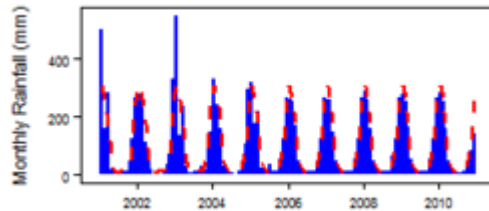
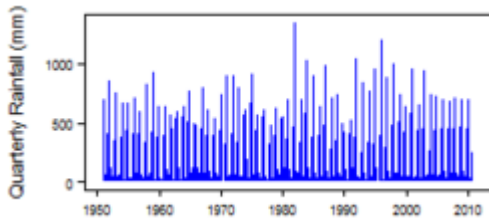
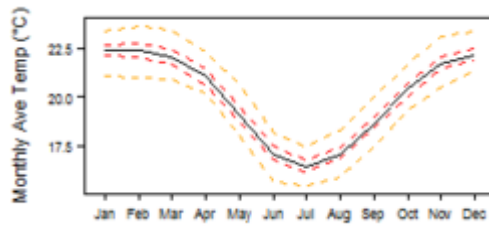
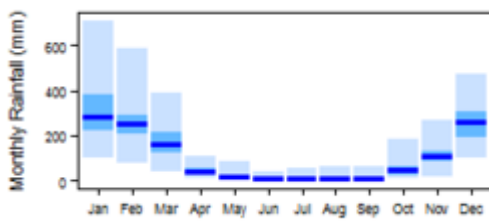


**Climate for Cfb region (Temperate without dry season (warm summer) /
Tempéré sans saison sèche (été chaud))**

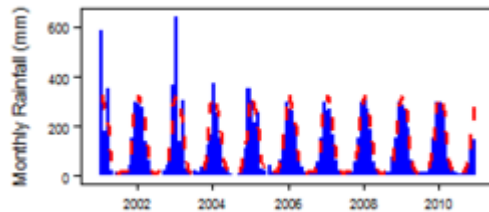
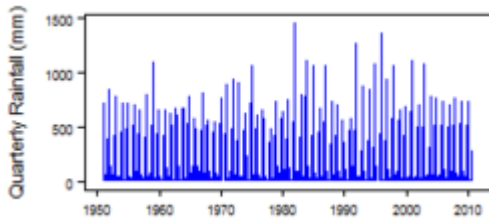
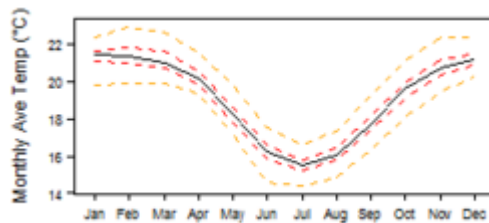
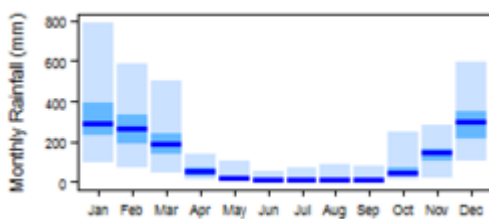




Climate for Cwa region (Temperate with dry winter (hot summer) / Tempéré avec hiver sec (été très chaud))



Climate for Cwb region (Temperate with dry winter (warm summer) / (Tempéré avec hiver sec (été chaud))



Retrieved from 'http://earthwise.bgs.ac.uk/index.php?title=Climate_of_Madagascar&oldid=38681'
Categories:

- [Africa Groundwater Atlas](#)
- [Climate](#)

Navigation menu

Personal tools

- Not logged in
- [Talk](#)
- [Contributions](#)
- [Log in](#)
- [Request account](#)

Namespaces

- [Page](#)
- [Discussion](#)

Variants

Views

- [Read](#)
- [Edit](#)
- [View history](#)
- [PDF Export](#)

More

Search

Navigation

- [Main page](#)
- [Recent changes](#)
- [Random page](#)
- [Help about MediaWiki](#)

Tools

- [What links here](#)
- [Related changes](#)
- [Special pages](#)
- [Permanent link](#)
- [Page information](#)

- [Cite this page](#)
- [Browse properties](#)

• This page was last modified on 10 December 2018, at 17:04.

- [Privacy policy](#)
- [About Earthwise](#)
- [Disclaimers](#)

