

Climate of South Africa

From Earthwise

[Jump to navigation](#) [Jump to search](#)

[Africa Groundwater Atlas](#) >> [Hydrogeology by country](#) >> [Hydrogeology of South Africa](#) >>
Climate of South Africa

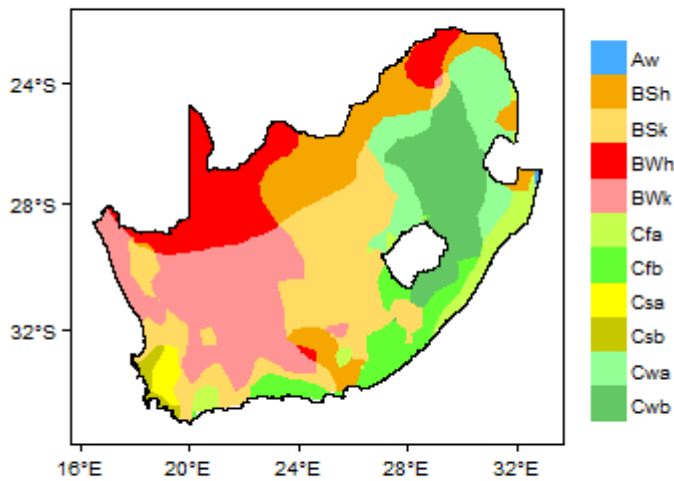
□

Contents

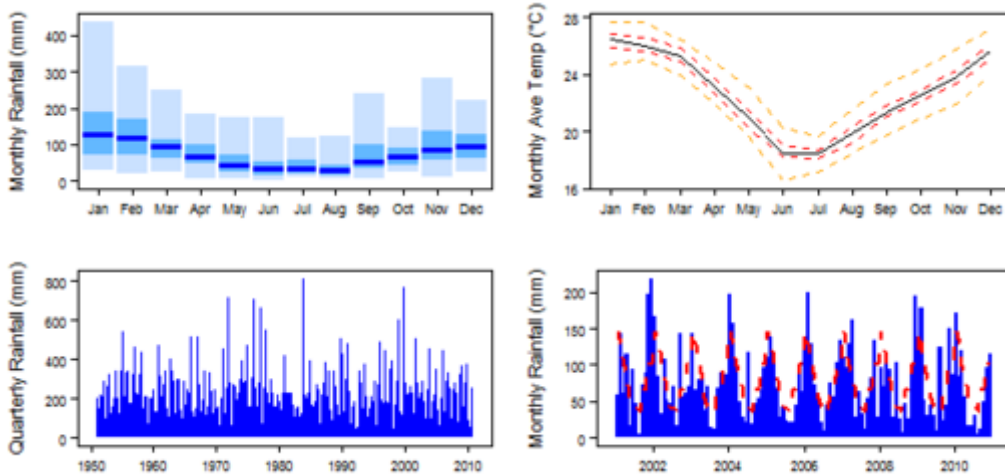
- [1 Climate zones](#)
 - [1.1 Climate for Aw region \(Tropical Savannah\)](#)
 - [1.2 Climate for BSh region \(Arid Steppe \(hot\)\)](#)
 - [1.3 Climate for BSk region \(Arid Steppe \(cold\)\)](#)
 - [1.4 Climate for BWh region \(Arid Desert \(hot\)\)](#)
 - [1.5 Climate for BWk region \(Arid Desert \(cold\)\)](#)
 - [1.6 Climate for Cfa region \(Temperate without dry season \(hot summer\)\)](#)
 - [1.7 Climate for Cfb region \(Temperate without dry season \(warm summer\)\)](#)
 - [1.8 Climate for Csa region \(Temperate with dry summer \(hot summer\)\)](#)
 - [1.9 Climate for Csb region \(Temperate with dry summer \(warm summer\)\)](#)
 - [1.10 Climate for Cwa region \(Temperate with dry winter \(hot summer\)\)](#)
 - [1.11 Climate for Cwb region \(Temperate with dry winter \(warm summer\)\)](#)

Climate zones

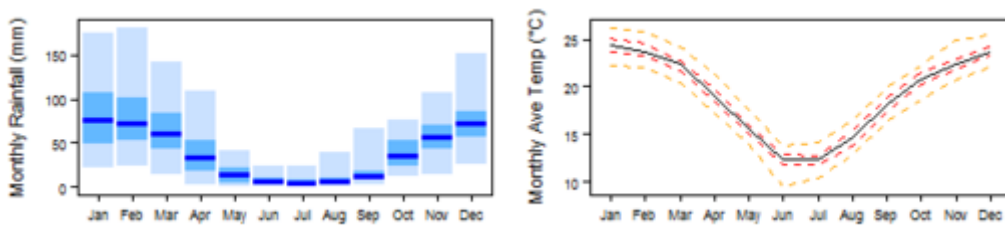
These maps and graphs were developed from the CRU TS 3.21 dataset produced by the Climatic Research Unit at the University of East Anglia, UK. For more information see the [climate resource page](#).

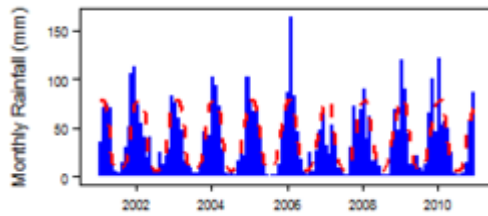
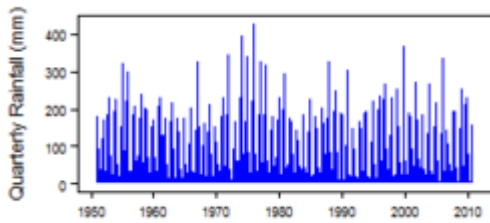


Climate for Aw region (Tropical Savannah)

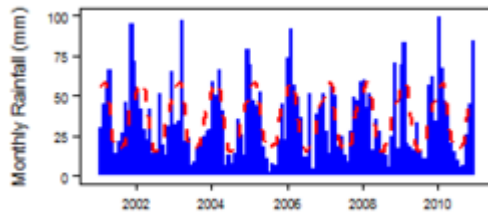
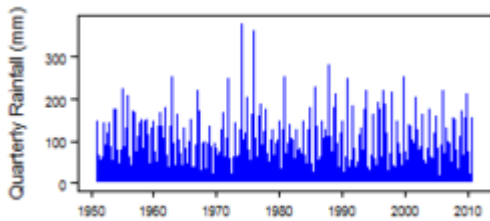
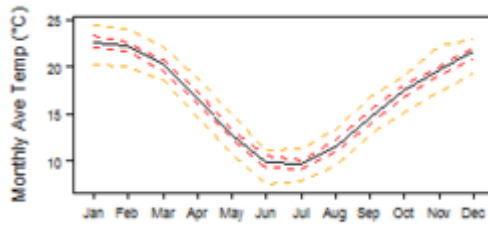
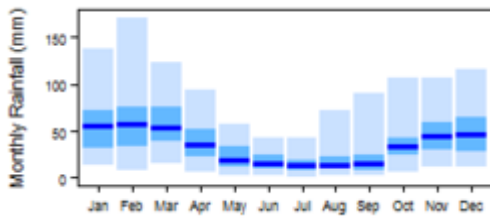


Climate for BSh region (Arid Steppe (hot))

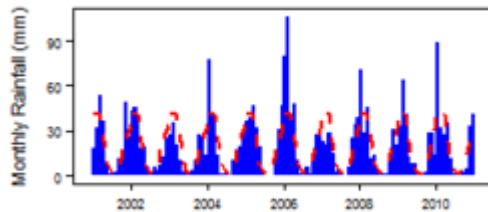
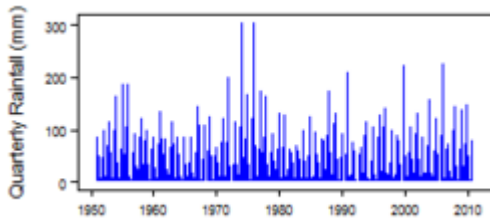
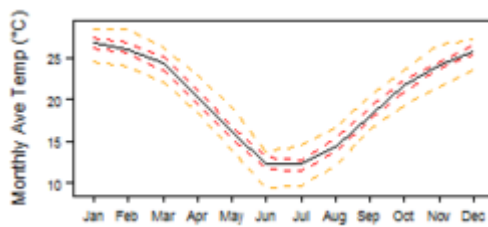
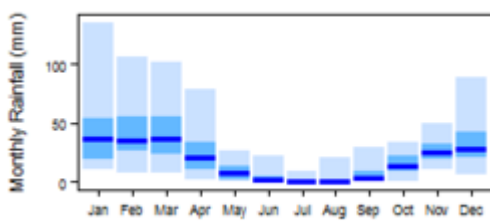




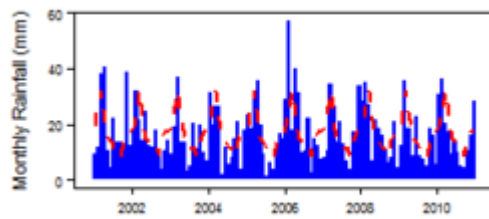
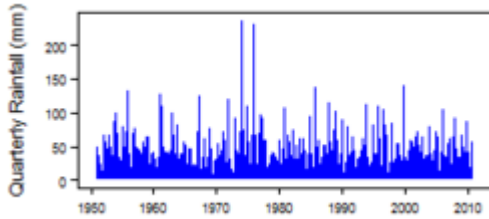
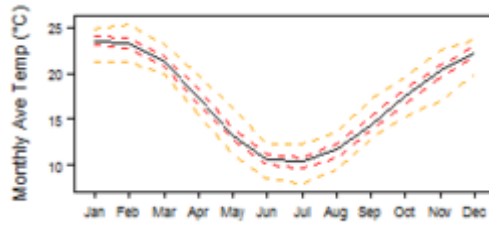
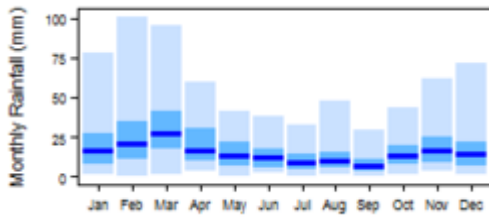
Climate for BSk region (Arid Steppe (cold))



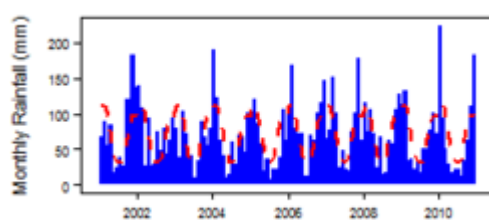
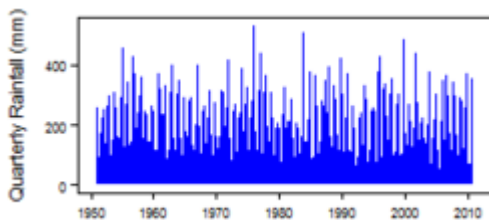
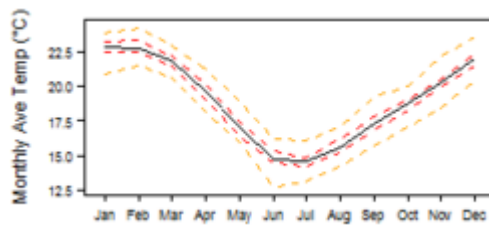
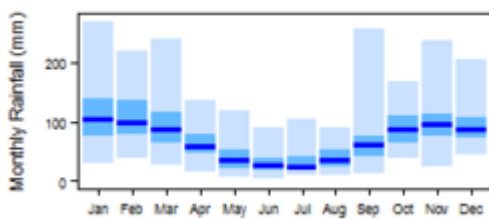
Climate for BWh region (Arid Desert (hot))



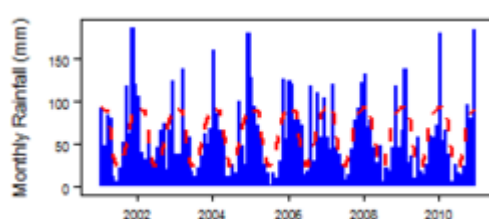
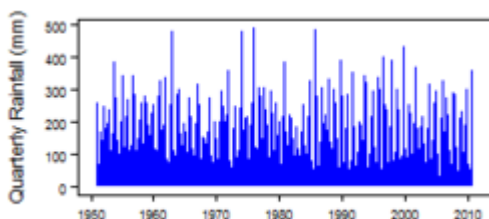
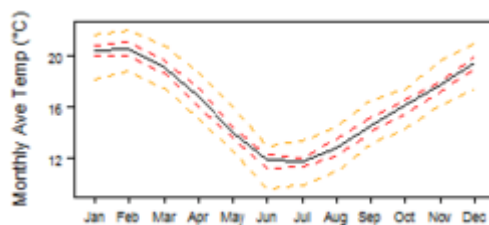
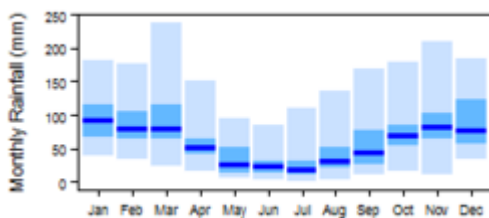
Climate for BWk region (Arid Desert (cold))



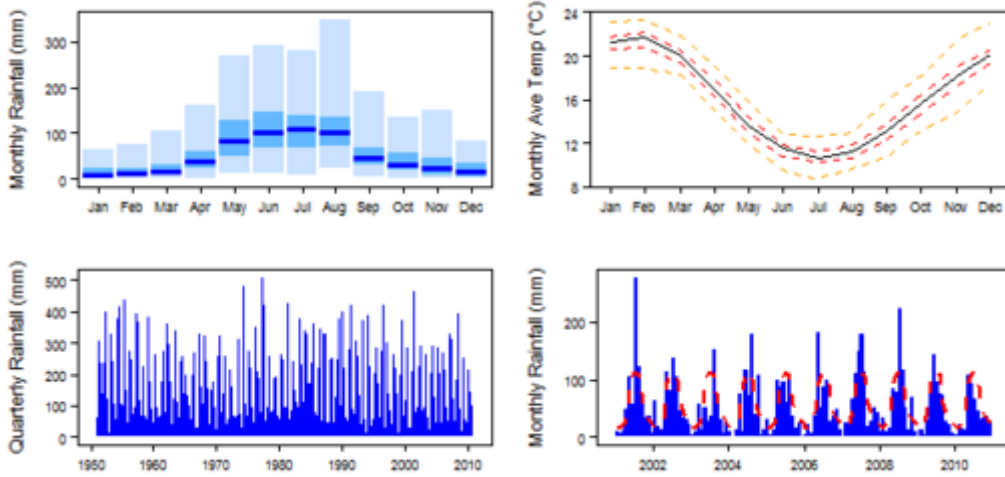
Climate for Cfa region (Temperate without dry season (hot summer))



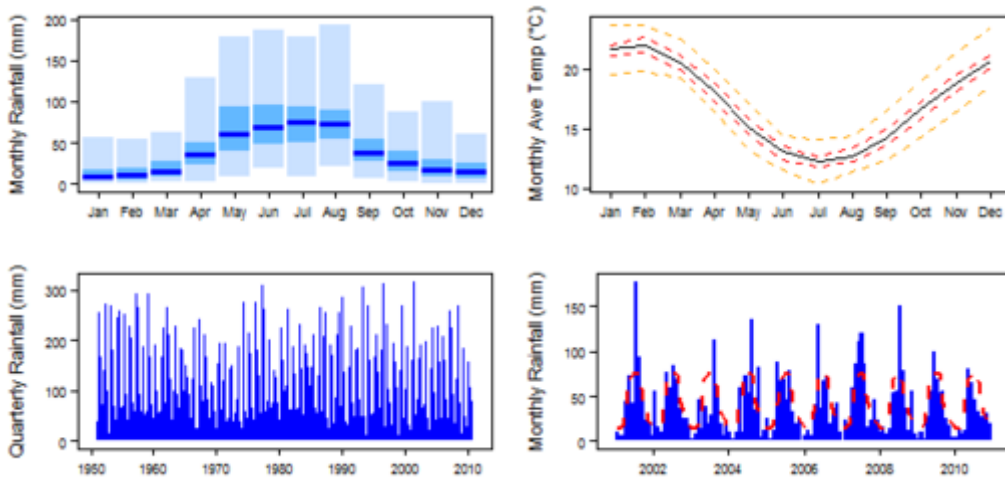
Climate for Cfb region (Temperate without dry season (warm summer))



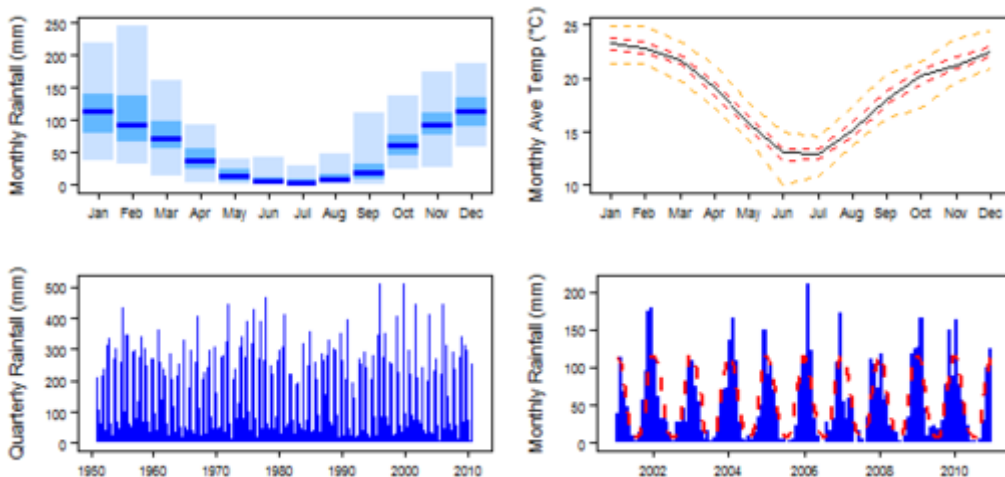
Climate for Csa region (Temperate with dry summer (hot summer))



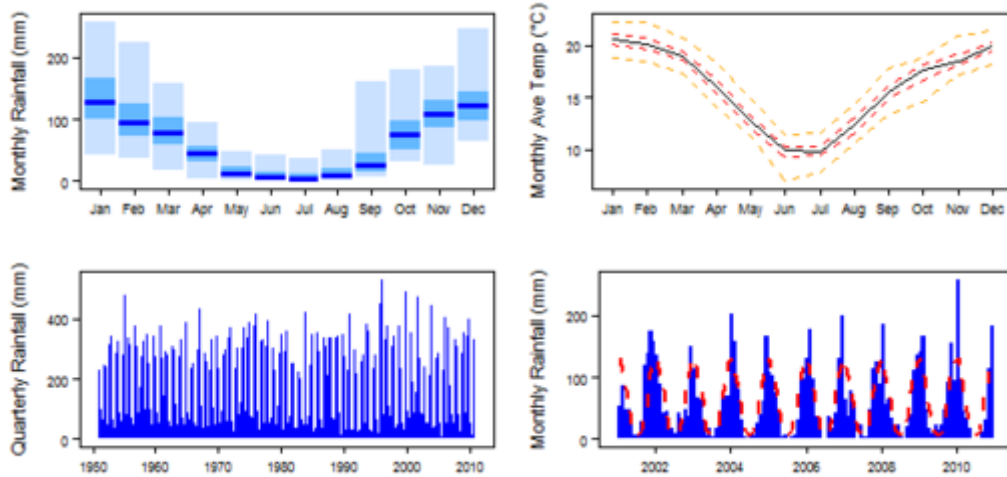
Climate for Csb region (Temperate with dry summer (warm summer))



Climate for Cwa region (Temperate with dry winter (hot summer))



Climate for Cwb region (Temperate with dry winter (warm summer))



Retrieved from 'http://earthwise.bgs.ac.uk/index.php?title=Climate_of_South_Africa&oldid=32831'
Categories:

- [Africa Groundwater Atlas](#)
- [Climate](#)

Navigation menu

Personal tools

- Not logged in
- [Talk](#)
- [Contributions](#)
- [Log in](#)
- [Request account](#)

Namespaces

- [Page](#)
- [Discussion](#)

Variants

Views

- [Read](#)
- [Edit](#)
- [View history](#)
- [PDF Export](#)

More

Search

Navigation

- [Main page](#)
- [Recent changes](#)
- [Random page](#)
- [Help about MediaWiki](#)

Tools

- [What links here](#)
- [Related changes](#)
- [Special pages](#)
- [Permanent link](#)
- [Page information](#)
- [Cite this page](#)
- [Browse properties](#)

- This page was last modified on 31 October 2017, at 14:22.

- [Privacy policy](#)
- [About Earthwise](#)
- [Disclaimers](#)

