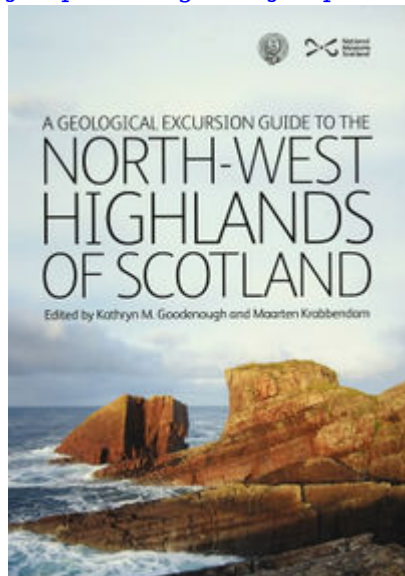


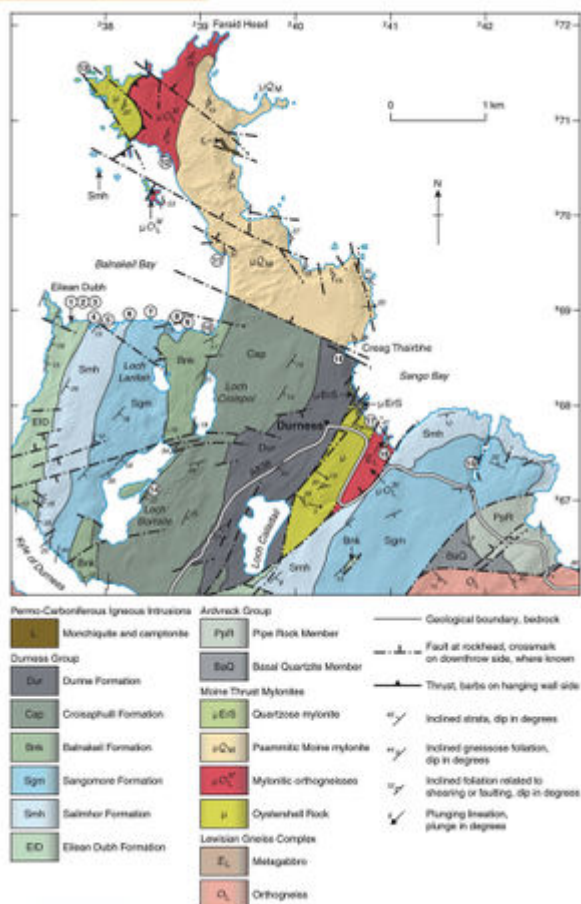
# Durness, Balnakeil Bay and Faraid Head, North-west Highlands - an excursion

From Earthwise

[Jump to navigation](#) [Jump to search](#)

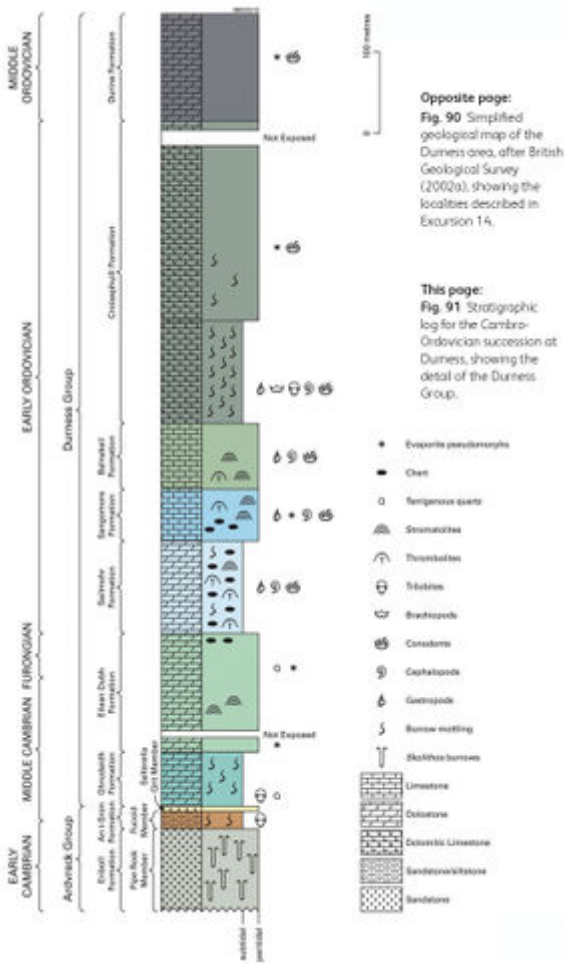


Buy the book [EGS](#). Also available from Amazon



Simplified geological map of the Durness area, after British Geological Survey (2002a), showing the localities described in

Excursion 14.



Stratigraphic log for the Cambro-Ordovician succession at Durness, showing the detail of the Durness Group.

By Robert Raine, Paul Smith, Bob Holdsworth and Rob Strachan

**Excursion 14 from: Goodenough, Kathryn M. and Krabbendam, Maartin (Editors) [A geological excursion guide to the North-west Highlands of Scotland](#). Edinburgh : Edinburgh Geological Society in association with NMS Enterprises Limited, 2011.**

- Purpose** To examine the carbonate rocks of the Durness Group and the faulted exposures of the Moine Thrust Sheet.
- Aspects covered** Carbonate sedimentology and sequence stratigraphy, Cambro-Ordovician stratigraphy, Moine and basement-derived mylonites, Caledonian thrusts, and post-Caledonian faults.
- Maps** OS: 1:50,000 Landranger sheet 15 Cape Wrath; 1:25,000 Explorer sheet 446 Durness and Cape Wrath. BGS: Scotland sheet 114W Loch Eriboll.
- Terrain** Coastal paths and wave-cut platform.

<b>Time</b>	The main part of the excursion (Localities 14.1-14.13), around Balnakeil Bay, including Durness Group and Moine lithologies and Caledonian structures, will take a full day. The additional localities (14.14-14.18) can be visited separately, depending on the interests of the party. An alternative day is to combine Localities 14.1-14.10 with 14.14, 14.15 and 14.17; in this way a complete review of the foreland carbonates of the Durness Group can be undertaken in the type area, in ascending stratigraphic order.
<b>Access</b>	This excursion largely comprises coastal outcrops and no access problems are known. The first part of the excursion is adjacent to Durness golf course, and care should obviously be taken in this area. All the outcrops in this excursion lie in Sites of Scientific Interest, and thus hammering should be avoided.

There are two excursions:

## [Excursion 14A: Balnakeil Bay and Faraid Head](#)

## [Excursion 14B: additional localities - Loch Borrallie, Smoo Cave and Sango Bay](#)

## [References](#)

At all times follow: [The Scottish Access Code](#) and [Code of conduct for geological field work](#)

Retrieved from

'[http://earthwise.bgs.ac.uk/index.php?title=Durness,\\_Balnakeil\\_Bay\\_and\\_Faraid\\_Head,\\_North-west\\_Highlands\\_-\\_an\\_excursion&oldid=24121](http://earthwise.bgs.ac.uk/index.php?title=Durness,_Balnakeil_Bay_and_Faraid_Head,_North-west_Highlands_-_an_excursion&oldid=24121)'

Category:

- [2. Northern Highlands](#)

## Navigation menu

### Personal tools

- Not logged in
- [Talk](#)
- [Contributions](#)
- [Log in](#)
- [Request account](#)

### Namespaces

- [Page](#)
- [Discussion](#)

### Variants

## Views

- [Read](#)
- [Edit](#)
- [View history](#)
- [PDF Export](#)

## More

## Search

## Navigation

- [Main page](#)
- [Recent changes](#)
- [Random page](#)
- [Help about MediaWiki](#)

## Tools

- [What links here](#)
- [Related changes](#)
- [Special pages](#)
- [Permanent link](#)
- [Page information](#)
- [Cite this page](#)
- [Browse properties](#)

• This page was last modified on 19 December 2015, at 20:54.

- [Privacy policy](#)
- [About Earthwise](#)
- [Disclaimers](#)

