

# Elsie Giles photographs: Series 18-24. 1922-1925 - index, GA 'Carreck Archive'

From Earthwise

[Jump to navigation](#) [Jump to search](#)

□

## Contents

- [1 Elsie Giles photographs: Series 18-24. 1922-1925 - index](#)
- [2 Series 18. Sevenoaks, Isle of Wight, Cromer and Norwich, Llandudno](#)
- [3 Series 19. Boulogne](#)
- [4 Series 20. North Wales, Beddgelert](#)
- [5 Series 21. Lake District, Coniston](#)
- [6 Series 22. Bordeaux etc.](#)
- [7 Series 23. Austwick, Carmarthen, Canterbury, 1925](#)
- [8 Series 24. Prague](#)

## [Elsie Giles photographs: Series 18-24. 1922-1925 - index](#)

[List of Elsie Giles albums](#)

[Elsie Giles photographs: Series 18-24. 1922-1925 - view album](#)

This Page is transcribed from [Elsie Giles notebook no 1. Series 1 to 34 plus miscellaneous lists.](#)

## **Series 18. Sevenoaks, Isle of Wight, Cromer and Norwich, Llandudno**





| GA Album               | PhotoNo | Caption   | Year       | Running No | Notes |
|------------------------|---------|---|------------|------------|-------|
|                        | 18.1.1  | Anticline in Lower Greensand Corporation Quarry               | 24.12.1922 |            |       |
|                        | 18.1.2  | Dry Hill Farm Near Sandridge, Kent                            | 24.12.1922 | 391        |       |
| <a href="#">Page 3</a> | 18.1.3  | Junction of sand (above) & clay (below) 1 sec                 | 21.4.1923  | 392        |       |
|                        | 18.1.4  | Brook Point, Isle of Wight                                    | 21.4.1923  | 392a       |       |
| <a href="#">Page 4</a> | 18.1.5  | Wind sculpturing (?) in sand. Nr. Compton Chine. I.W.         | 21.4.1923  | 393        |       |
| <a href="#">Page 4</a> | 18.1.6  | Weathering of greensand Compton Bay I.W.                      | 21.4.1923  | 394        |       |
|                        | 18.2.1  | Vertical chalk beds in cliff Freshwater Bay E. Side           | 21.4.1923  | 395        |       |
|                        | 18.2.2  | Vertical chalk beds in cliff Freshwater Bay W. Side           | 21.4.1923  |            |       |
|                        | 18.2.3  | Spoilt No exposures made. Film rolled up in camera            |            | —          |       |
|                        | 18.2.4  | Spoilt No exposures made. Film rolled up in camera            |            | —          |       |
|                        | 18.2.5  | Spoilt No exposures made. Film rolled up in camera            |            | —          |       |
|                        | 18.2.6  | Spoilt No exposures made. Film rolled up in camera            |            | —          |       |
|                        | 18.3.1  | Sand cliffs Alum Bay I of W                                   | 23.4.1923  | —          |       |
|                        | 18.3.2  | Sand cliffs Alum Bay I of W. Towards Totland                  | 23.4.1923  | —          |       |
|                        | 18.3.3  | Arrangement of strings in hop garden, Boro. Green Kent        | 29.4.1923  | —          |       |
|                        | 18.3.4  | Smoke trial at R.D. Woolwich. Seen from Bostal Hill           | 1.5.1923   | 396        |       |
|                        | 18.3.5  | Elsie Giles, New Cross  | 6.5.1923   | 397        |       |
|                        | 18.3.6  | Elsie Giles, New Cross  | 6.5.1923   | 398        |       |
| <a href="#">Page 5</a> | 18.4.1  | Claygate beds, alternate sand and clay Welch's {f&t} Claygate | 12.5.23    | --         |       |

|                        |         |  |         |     |
|------------------------|---------|--|---------|-----|
| <a href="#">Page 5</a> | 18.4.2  | N.Downs, from Oxshott common showing Mole Gorge on skyline, cut thro chalk escarpment  | 12.5.23 | 399 |
|                        | 18.4.3  | N. Downs, from Oxshott common showing Mole Gorge on skyline, cut thro chalk escarpment   | 12.5.23 | 400 |
| <a href="#">Page 6</a> | 18.4.4  | Tree Stump in Forest bed, Mundesley  | 19.5.23 | 401 |
|                        | 18.4.5  | Norfolk (in cliff)   | 19.5.23 | 402 |
| <a href="#">Page 7</a> | 18.4.6  | Cliffs nr W. Runton Gap (Nr Cromer). {Leda zayalis} beds (with small hole dug in) below mostly covered by fallen stuff contorted drift above | 20.5.23 | 403 |
| <a href="#">Page 7</a> | 18.5.1  | Moraine landscape from Pretty Corner Near Sheringham   | 21.5.23 | 404 |
| <a href="#">Page 7</a> | 18.5.2  | Moraine landscape from Pretty Corner Near Sheringham   | 21.5.23 | 405 |
| <a href="#">Page 7</a> | 18.5.3  | Sections in Cannon-shot gravels Gravel pit near Holt Railway Station, Norfolk  | 21.5.23 | 406 |
| <a href="#">Page 7</a> | 18.5.4. | Sections in Cannon-shot gravels Gravel pit near Holt Railway Station, Norfolk  | 21.5.23 | 407 |
| <a href="#">Page 8</a> | 18.5.5  | Sections in Cannon-shot gravels, Gravel pit near Holt Railway Station, Norfolk   | 21.5.23 | 408 |
| <a href="#">Page 8</a> | 18.5.6  | Holt Marl pit (Marly drift = glacially rearranged chalk)   | 21.5.23 | 409 |
|                        | 18.6.1  | Section of esker. Gallows pit Blakeney (core of marly drift sand and cannon-shot gravel above)   | 21.5.23 | 410 |
|                        | 18.6.2  | Grass gorse-covered esker, from road near Gallows Pit Blakeney   | 21.5.23 | 411 |
|                        | 18.6.3  | Tombstone in Blakeney Churchyard   | 21.5.23 | 412 |
|                        | 18.6.4  | Marly drift with strings of boulder clay and glacial sand, pit about 1/2 mile inland from Weybourne  | 21.5.23 | 413 |
|                        | 18.6.5  | Marly drift with strings of boulder clay and glacial Sand, pit about ½ mile inland from Weybourne  | 21.5.23 | 414 |
|                        | 18.6.6  | Band in marly drift. Pit below Baston Hill nr Sheringham   | 21.5.23 | 415 |
|                        | 18.7.1  | Bands in marly drift, pit behind Beeston Hill  | 21.5.23 | 416 |
|                        | 18.7.2  | Bands in marly drift, pit behind Beeston Hill  | 21.5.23 | 417 |
|                        | 18.7.3  | Beeston hill pit. Marly drift Band visible in hollow below   | 21.5.23 | 418 |

Elsie Giles  
Photographs:  
Series  
18-24]]

|                         |         |   |         |     |
|-------------------------|---------|---|---------|-----|
|                         | 18.7.4  | Contorted marly drift Beeston Hill Pit  | 21.5.23 | 419 |
|                         |         | Kiln Pit. Burgh. Macronata chalk  |         |     |
|                         | 18.7.5. | Norwich Crag. Chillesford clay, and<br>Bure Valley Beds (=???? shingle)   | 22.5.23 | 420 |
|                         | 18.7.6  | Sprowston Brickearth pit. Middle<br>glacial sands & gravel on hummocky<br>surface of Norwich Brickearth               | 22.5.23 | 421 |
|                         | 18.8.1  | Sprowston Brickearth pit. Middle<br>glacial sands & gravel on hummocky<br>surface of Norwich Brickearth: closer<br>up | 22.5.23 | 422 |
|                         | 18.8.2  | Middle Glacial gravels etc. Sprowston<br>pit  | 22.5.23 | 423 |
|                         | 18.8.3  | Glacial gravels (=cannon shot) above<br>Middle Glacial Sprowston Brickearth<br>pit                                    | 22.5.23 | 424 |
|                         | 18.8.4  | Chalk, Norwich Crag and Westleton<br>beds, Sprowston Chalk Pit  | 22.5.23 | 425 |
|                         | 18.8.5  | Eaton chalk Pit in Norwich. Micronata<br>chalk, Norwich Crag and Westleton<br>pebble beds                             | 22.5.23 | 426 |
|                         | 18.8.6  | Eaton chalk pit in Norwich Micronata<br>Chalk, Norwich Crag and Westleton<br>pebble beds.                             | 22.5.23 | 427 |
|                         | 18.9.1  | Eaton Chalk Pit Nr Norwich with GA<br>Party   | 23.5.23 | 428 |
|                         | 18.9.2  | Lunate Chalk, Trimingham. From top<br>of cliff  | 24.5.23 | 429 |
|                         | 18.9.3  | Cromer Till, contorted drift above<br>about half way between Mundesley<br>and Bacton                                  | 26.5.23 | 430 |
|                         | 18.9.4  | Cromer Till, contorted drift above,<br>About ½ way between Mundesley and<br>Bacton                                    | 26.5.23 | 431 |
|                         | 18.9.5  | Contorted till. Boulder of sand in<br>upper part half way between<br>Mundesley and Bacton                             | 26.5.23 | 432 |
|                         | 18.9.6  | Contorted till. Boulder of sand in<br>upper part, ½ way between<br>Mundesley and Bacton                               | 26.5.23 | 433 |
| <a href="#">Page 9</a>  | 18.10.1 | Till and drift with big sand boulders ½<br>way between Mundesley and Bacton   | 26.5.23 | 434 |
| <a href="#">Page 9</a>  | 18.10.2 | Contortion in till about 10ft away ½<br>way between Mundesley and Bacton  | 26.5.23 | 435 |
| <a href="#">Page 9</a>  | 18.10.3 | Chalk boulder in drift with line of<br>shattered flints W side of E Runton<br>Gap                                     | 27.5.23 | 436 |
| <a href="#">Page 10</a> | 18.10.4 | Chalk boulder in drift with line of<br>shattered flints W side of E Runton<br>Gap                                     | 27.5.23 | 437 |

|                         |         |   |         |     |
|-------------------------|---------|---|---------|-----|
| <a href="#">Page 10</a> | 18.10.5 | Faulted flint in chalk boulder; W side of E Runton Gap                      | 27.5.23 | 438 |
| <a href="#">Page 10</a> | 18.10.6 | Contorted drift with faulted gravel boulder between W Runton and Sheringham | 27.5.23 | 439 |
|                         | 18.11.1 | Contorted drift above Till. Nr Sheringham                                   | 27.5.23 | 440 |
|                         | 18.11.2 | Elsie Giles paddling. E Beach, Llandudno                                    | 23.6.23 | 441 |
|                         | 18.11.3 | Elsie Giles paddling. E Beach, Llandudno                                    | 23.6.23 | 442 |
|                         | 18.11.4 | Great Ormes Head from Pier Llandudno  | 24.6.23 | 443 |
|                         | 18.11.5 | Great Ormes Head from Pier Llandudno  | 24.6.23 | 444 |
|                         | 18.11.6 | Great Ormes Head from Pier Llandudno  | 24.6.23 | 445 |
|                         | 18.12.1 | Agnes & Elsie Giles in Sychnant Pass, N. Wales                              | 26.6.23 | 446 |
|                         | 18.12.2 | Sychnant Pass. Righthand side, looking slightly down                        | 26.6.23 | 447 |
|                         | 18.12.3 | Sychnant Pass. Looking down from cross path                                 | 26.6.23 | 448 |
|                         | 18.12.4 | Elsie Giles in ditch in Capelulo  | 26.6.23 | 449 |
|                         | 18.12.5 | Allt Wen from Capelulo-Dwygyfylchi road                                     | 26.6.23 | 450 |
|                         | 18.12.6 | Agnes coming own path near Penmaenmawr                                      | 26.6.23 | 451 |
|                         | 18.13.1 | Elsie Giles paddling East Beach Llandudno                                   | 29.6.23 | 452 |
|                         | 18.13.2 | Elsie Giles paddling East Beach Llandudno                                   | 29.6.23 | 453 |
|                         | 18.13.3 | Elsie Giles paddling East Beach Llandudno                                   | 29.6.23 | 454 |
|                         | 18.13.4 | Elsie Giles paddling East Beach Llandudno                                   | 29.6.23 | 455 |
|                         | 18.13.5 | Elsie Giles paddling East Beach Llandudno                                   | 29.6.23 | 456 |
|                         | 18.13.6 | Aber River with Elsie & Agnes   | 29.6.23 | 457 |
| <a href="#">Page 11</a> | 18.14.1 | Aber Falls  | 29.6.23 | 458 |
| <a href="#">Page 12</a> | 18.14.2 | Aber Falls  | 29.6.23 | 459 |
| <a href="#">Page 11</a> | 18.14.3 | Aber Falls  | 29.6.23 | 460 |
| <a href="#">Page 12</a> | 18.14.4 | Aber Falls  | 29.6.23 | 461 |
| <a href="#">Page 11</a> | 18.14.5 | Aber Falls  | 29.6.23 | 462 |
| <a href="#">Page 12</a> | 18.14.6 | Aber Falls with Elsie and Agnes   | 29.6.23 | 463 |
|                         | 18.15.1 | Fossils in carb.lst quarry on Gt. Ormes Head Summit                         | 2.7.23  | 464 |

|                         |         |   |        |     |
|-------------------------|---------|---|--------|-----|
|                         | 18.15.2 | Fossils in carb.lst quarry on Gt. Ormes Head Summit     | 2.7.23 | 465 |
|                         | 18.15.3 | Fossils in carb.lst quarry on Gt. Ormes Head Summit     | 2.7.23 | 466 |
|                         | 18.15.4 | Fossils in carb.lst quarry on Gt. Ormes Head Summit     | 2.7.23 | 467 |
|                         | 18.15.5 | Fossils in carb.lst quarry on Gt. Ormes Head Summit     | 2.7.23 | 468 |
|                         | 18.15.6 | Fossils in carb.lst quarry on Gt. Ormes Head Summit     | 2.7.23 | 469 |
| <a href="#">Page 13</a> | 18.16.1 | Waterkloof Cottage, Winchelsea                          | 4.8.23 | 470 |
| <a href="#">Page 13</a> | 18.16.2 | Kenneth Rolter in (?) of Waterkloof Cottage, winchelsea | 4.8.23 | 471 |
| <a href="#">Page 14</a> | 18.16.3 | Kenneth buried in gravel on beach                       | 4.8.23 | 472 |
| <a href="#">Page 14</a> | 18.16.4 | David buried in gravel on beach                         | 4.8.23 | 473 |
|                         | 18.16.5 | J Rolter and self after bathing (f/22) 1/25             | 4.8.23 | -   |
|                         | 18.16.6 | David Rolter in tea room Hastings                       | 6.8.23 | -   |

## Series 19. Boulogne



| <b>GA Album</b> | <b>PhotoNo</b> | <b>Caption</b>  | <b>Year</b> | <b>Running No</b> | <b>Notes</b> |
|-----------------|----------------|---|-------------|-------------------|--------------|
|                 | 19.1.1         | Top surface of modular limestone (above Cockley Bed) Cliff near Wemereux? With big worm borings | 25.8.23     | 474               |              |
|                 | 19.1.2         | Hautbanc quarry Haut Banc Limestone   | 27.8.23     | 475               |              |
|                 | 19.1.3         | Henoux Marble Quarry Rinxent Hydroquent with wire cutting at rock in place                      | 27.8.23     | 476               |              |
|                 | 19.1.4         | Henoux Marble Quarry Rinxent Hydroquent with wire cutting at rock in place                      | 27.8.23     | 477               |              |
|                 | 19.1.5         | Henoux Marble Quarry Rinxent Hydroquent with wire cutting at rock in place                      | 27.8.23     | 478               |              |

|                         |        |   |         |     |
|-------------------------|--------|---|---------|-----|
|                         | 19.1.6 | Poulain (Hydrequent) quarry. Napoleon and Notre Dame Marbles                    | 27.8.23 | 479 |
|                         | 19.2.1 | Gres de la Creche & clay. Syncline & anticline in lower beds Cliffs nr Boulogne | 29.8.23 | -   |
| <a href="#">Page 15</a> | 19.2.2 | Bull, Davis, Davies, sheltering in cave. Nr Ambleterase                         | 28.8.23 | 480 |
| <a href="#">Page 15</a> | 19.2.3 | Blanc Nez. Wissant side   | 31.8.23 | 481 |
|                         | 19.2.4 | Blanc Nez. Wissant side (dud)   | 31.8.23 | -   |
| <a href="#">Page 16</a> | 19.2.5 | Blanc Nez. Wissant side   | 31.8.23 | 482 |
|                         | 19.2.6 | Raised Beach South of Sangatte  | 31.8.23 | 483 |
|                         | 19.3.1 | Blanc Nez from Hotelat Griz Nez   | 31.8.23 | --  |
|                         | 19.3.2 | Sunset behind rocks Griz Nez  | 31.8.23 | 484 |
|                         | 19.3.3 | Face painted on rock concretion Griz Nez  | 31.8.23 | 485 |
|                         | 19.3.4 | Not exposed   | 31.8.23 | -   |
|                         | 19.3.5 | Carb Limestone quarry in Haut Bera Station                                      | 5.9.23  | 486 |
|                         | 19.3.6 | Sand dunes at Handelot  | 6.9.23  | 487 |
| <a href="#">Page 19</a> | 19.4.1 | Sand dunes at Handelot  | 6.9.23  | 488 |
| <a href="#">Page 19</a> | 19.4.2 | Sand dunes at Handelot  | 6.9.23  | 489 |
| <a href="#">Page 19</a> | 19.4.3 | Sand dunes at Handelot  | 6.9.23  | 490 |
| <a href="#">Page 20</a> | 19.4.4 | Sand dunes at Handelot  | 6.9.23  | 491 |
|                         | 19.4.5 | Pipe in chalk Nr Summit of Dover Road Hill Folkestone                           | 9.9.23  | 492 |
|                         | 19.4.6 | Not exposed   | -       | -   |

## Series 20. North Wales, Beddgelert



• Party on cliffs at Borth y Gest. Elsie Giles photograph 20.6.5.



•

Y Garn from  
near Ogwen  
Cottage



Tryfan and Llyn  
Ogwen from  
Ogwen Cottage



Summit of  
Glyder Fach &  
Snowdon]]



Hole in Cliff. J  
Rawson and  
Wooff. Borth-y-  
Gest





Boxford chalk  
pit, with fault &  
distortion of bed

| GA Album                | PhotoNo | Caption   | Year    | Running<br>No | Notes |
|-------------------------|---------|---|---------|---------------|-------|
|                         | 20.1.1  | View up river from Aberglaslyn Bridge   | 19.4.24 | 493           |       |
|                         | 20.1.2  | View up river from Aberglaslyn  | 19.4.24 | 494           |       |
|                         | 20.1.3  | Nr. Tan Lan   | 19.4.24 | 495           |       |
|                         | 20.1.4  | Down river near Penrhyndeudraeth  | 19.4.24 | -             |       |
|                         | 20.1.5  | Gwynant Lake towards Beddgelert   | 20.4.24 | -             |       |
|                         | 20.1.6  | Gwynant Lake towards Beddgelert   | 20.4.24 | -             |       |
| <a href="#">Page 21</a> | 20.2.1  | Y Garn from near Ogwen Cottage  | 20.4.24 | 496           |       |
|                         | 20.2.2  | Y Garn, (a few yards nearer)  | 20.4.24 | 497           |       |
|                         | 20.2.3  | Devil's Kitchen (to left of 2)  | 20.4.24 | 498           |       |
|                         | 20.2.4  | Tryfan from same view point   | 20.4.24 | 499           |       |
|                         | 20.2.5  | Pen yr Olen Wen, from same point  | 20.4.24 | 500           |       |
|                         | 20.2.6  | Part of Glyder Fawr & Devil's Kitchen from Llyn Idwal   | 20.4.24 | 501           |       |
|                         | 20.3.1  | Y Garn Summit from Llyn Idwal   | 20.4.24 | 502           |       |
| <a href="#">Page 23</a> | 20.3.2  | Y Garn & Falls from point between Idwal and Ogwen   | 20.4.24 | 503           |       |
| <a href="#">Page 23</a> | 20.3.3  | Tryfan & Llyn Ogwen from Ogwen Cottage  | 20.4.24 | 504           |       |
| <a href="#">Page 24</a> | 20.3.4  | Tryfan from about 2000ft (Nr Llyn Bochlwyd)   | 20.4.24 | 505           |       |
| <a href="#">Page 24</a> | 20.3.5  | Glyder Fach from Llyn Bochlwyd  | 20.4.24 | 506           |       |
| <a href="#">Page 24</a> | 20.3.6  | {Glyder Fach from Llyn Bochlwyd} to right of previous {506} (y Waen O'er)                         | 20.4.24 | 507           |       |
| <a href="#">Page 25</a> | 20.4.1  | Y Garn & Glacial Valley (Afon Ogwen) & Llyn Bochlwyd (beginning of Nant Ffrancon pass)            | 20.4.24 | 508           |       |
| <a href="#">Page 25</a> | 20.4.2  | Glyder Fach from above Bochlwyd (same point as 20.4.1)  | 20.4.24 | 509           |       |
| <a href="#">Page 25</a> | 20.4.3  | Tryfan and shadow from slope of Glyder Fach   | 20.4.24 | 510           |       |
|                         | 20.4.4  | Tryfan & Carnedd Dafydd (to left of {510})  | 20.4.24 | 511           |       |
| <a href="#">Page 26</a> | 20.4.5  | Carnedd Dafydd & Pen yr Olen Wen. Part of Glyder Fach and Tryfan in foreground (to left of {511}) | 20.4.24 | 512           |       |
| <a href="#">Page 26</a> | 20.4.6  | Cairn near summit of Glyder Fach (with Digby)   | 20.4.24 | 513           |       |
| <a href="#">Page 27</a> | 20.5.1  | Summit of Glyder Fach & Snowdon   | 20.4.24 | 514           |       |
| <a href="#">Page 27</a> | 20.5.2  | Summit of Glyder Fach & Glyder Fawr   | 20.4.24 | 515           |       |
|                         | 20.5.3  | Summit of Glyder Fach   | 20.4.24 | -             |       |
| <a href="#">Page 27</a> | 20.5.4  | Across river from Barmouth  | 21.4.24 | 516           |       |
|                         | 20.5.5  | Across river from Barmouth to right of 20.5.4 {516}   | 21.4.24 | -             |       |
|                         | 20.5.6  | Torrent Walk, Dolgelly  | 21.4.24 | -             |       |

|                         |         |   |             |
|-------------------------|---------|---|-------------|
| <a href="#">Page 29</a> | 20.6.1  | Beddgelert Station  | 21.4.24 517 |
| <a href="#">Page 29</a> | 20.6.2  | Cliffs at Borth y Gest with imitation climbers. C Worff, Entwistle, Digby                                 | 21.4.24 518 |
| <a href="#">Page 30</a> | 20.6.3  | Cliffs at Borth y Gest with imitation climbers C Worff, Entwistle, Digby                                  | 21.4.24 519 |
| <a href="#">Page 29</a> | 20.6.4  | Party on Cliffs at Borth y Gest   | 21.4.24 520 |
| <a href="#">Page 30</a> | 20.6.5  | Party on cliffs at Borth y Gest   | 21.4.24 521 |
| <a href="#">Page 30</a> | 20.6.6  | E Rawson across Gully. Borth y Gest   | 21.4.24 522 |
| <a href="#">Page 31</a> | 20.7.1  | E Rawson across Gully. Borth y Gest   | 21.4.24 523 |
| <a href="#">Page 31</a> | 20.7.2  | Gully in Cliff. Borth-y-Gest  | 21.4.24 524 |
| <a href="#">Page 32</a> | 20.7.3  | Cliff at Borth-y-Gest & view across harbour   | 21.4.24 525 |
| <a href="#">Page 32</a> | 20.7.4  | Hole in Cliff. J Rawson and Wooff. Borth-y-Gest   | 21.4.24 526 |
|                         | 20.7.5  | Crevasse in cliffs Borth-y-Gest   | 21.4.24 527 |
|                         | 20.7.6  | Crevasse in cliffs Borth-y-Gest   | 21.4.24 528 |
| <a href="#">Page 33</a> | 20.8.1  | Hole in cliffs Borth-y-Gest   | 21.4.24 529 |
| <a href="#">Page 33</a> | 20.8.2  | Cliffs from Beach, Borth-y-Gest   | 21.4.24 530 |
|                         | 20.8.3  | Moel y Gest from road Borth-y-Gest C Wooff, Entwistle, Digby. Portmadoc (L...colite of gabbroic dolerite) | 21.4.24 -   |
|                         | 20.8.4  | Hunter & WLT in Welsh Highland Railway (out of focus)   | 21.4.24 -   |
|                         | 20.8.5  | Not exposed   | - -         |
| <a href="#">Page 34</a> | 20.8.6  | Aberglaslyn pass from Aberglaslyn bridge (river swollen by rains)   | 26.4.24 531 |
| <a href="#">Page 35</a> | 20.9.1  | Afon Glaslyn under Aberglaslyn Bridge   | 26.4.23 532 |
|                         | 20.9.2  | Cynicht, Moelwyn etc from road, Beddgelert-Portmadoc  | 26.4.23 -   |
|                         | 20.9.3  | Cynicht, Moelwyn etc from road, Beddgelert-Portmadoc 3 to right of 2 (533 to r of --)                     | 26.4.23 533 |
|                         | 20.9.4. | Cynicht, Moelwyn etc from road, Beddgelert-Portmadoc 4 to left of 2 (534 to left of --)                   | 26.4.23 534 |
|                         | 20.9.5  | Moel y Gest & Tremadoc church from road   | 26.4.23 535 |
|                         | 20.9.6  | Cottage and trees on hill. Road Portmadoc-Tremadoc  | 26.4.23 536 |
| <a href="#">Page 37</a> | 20.10.1 | Tremadoc & face of Allt-Wen   | 26.4.23 537 |
| <a href="#">Page 37</a> | 20.10.2 | Allt-Wen & portion of Market Place, Tremadoc  | 26.4.23 538 |
| <a href="#">Page 37</a> | 20.10.3 | Tremadoc market Place   | 26.4.23 539 |
|                         | 20.10.4 | Moel y Gest from Laundry at Tremadoc  | 26.4.23 --- |
|                         | 20.10.5 | Tan yr Allt (road near Laundry Tremadoc)  | 26.4.23 540 |
| <a href="#">Page 38</a> | 20.10.6 | Craig Bwlch y Moch Road near Prenteg  | 26.4.23 541 |
|                         | 20.11.1 | Aberglaslyn Pass Moel Ddu from Pont Croesor   | 26.4.23 542 |
|                         | 20.11.2 | From Llanfrothen towards Beddgelert   | 26.4.23 543 |
| <a href="#">Page 39</a> | 20.11.3 | Garregyllwyd & Moel Ddu from Tan Lan  | 26.4.23 544 |
| <a href="#">Page 40</a> | 20.11.4 | Aberglasyn from bridge  | 26.4.23 545 |
| <a href="#">Page 40</a> | 20.11.5 | Boxford chalk pit, with fault & distortion of bed   | 17.5.23 546 |
| <a href="#">Page 40</a> | 20.11.6 | Boxford chalk pit, with fault & distortion of bed   | 17.5.23 547 |

20.12.1

20.12.2

20.12.3

20.12.4

20.12.5

20.12.6

## Series 21. Lake District, Coniston



J Ransom &  
O'Malley in  
porch of cottage,  
Colwith



Tilberthwaite  
Gill and Stream,  
lower part



Tilberthwaite  
Gill



J Ransom & J  
Wooff on  
Steamer on  
Coniston Lake



J R & O'M  
Duddon Valley



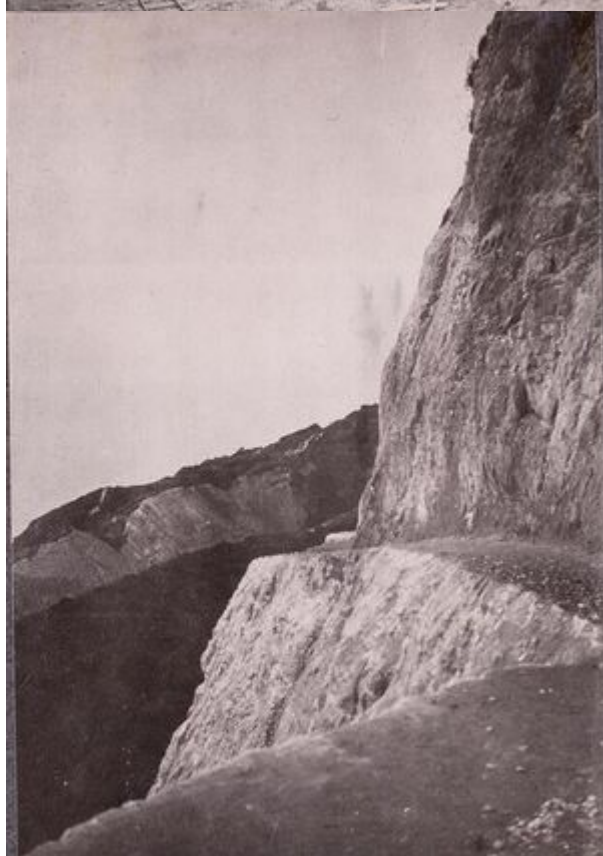
Duddon Valley

| GA Album                | PhotoNo | Caption                 | Year   | Running<br>No | Notes |
|-------------------------|---------|-------------------------|--------|---------------|-------|
| <a href="#">Page 41</a> | 21.1.1  | Tilberthwaite Gill      | 8.6.24 | 548           |       |
|                         | 21.1.2  | Tilberthwaite Gill      | 8.6.24 | -             |       |
| <a href="#">Page 41</a> | 21.1.3  | Tilberthwaite Gill      | 8.6.24 | 549           |       |
| <a href="#">Page 42</a> | 21.1.4  | Tilberthwaite Gill      | 8.6.24 | 550           |       |
| <a href="#">Page 42</a> | 21.1.5  | Tilberthwaite Gill      | 8.6.24 | 551           |       |
| <a href="#">Page 42</a> | 21.1.6  | Tilberthwaite Gill      | 8.6.24 | 552           |       |
| <a href="#">Page 43</a> | 21.2.1  | Tilberthwaite Gill      | 8.6.24 | 553           |       |
|                         | 21.2.2  | Tilberthwaite Gill      | 8.6.24 | 554           |       |
|                         | 21.2.3  | Tilberthwaite Gill      | 8.6.24 | 555           |       |
|                         | 21.2.4  | No good double exposure | 8.6.24 | -             |       |
| <a href="#">Page 44</a> | 21.2.5  | Tilberthwaite Gill      | 8.6.24 | 557           |       |

|                         |        |  |         |     |
|-------------------------|--------|--|---------|-----|
| <a href="#">Page 44</a> | 21.2.6 | Tilberthwaite Gill   | 8.6.24  | 558 |
|                         | 21.3.1 | Falls Nr. Coniston Copper Mine (Side of Old Man)                           | 9.6.24  | 559 |
| <a href="#">Page 45</a> | 21.3.2 | Falls on other stream Nr Coniston Cu Mine                                  | 9.6.24  | 560 |
|                         | 21.3.3 | Falls on other stream Nr Coniston Cu Mine                                  | 9.6.24  | 561 |
|                         | 21.3.4 | Falls on other stream Nr Coniston Cu Mine                                  | 9.6.24  | 562 |
| <a href="#">Page 46</a> | 21.3.5 | Falls on other stream Nr Coniston Cu Mine                                  | 9.6.24  | 563 |
|                         | 21.3.6 | Falls on other stream Nr Coniston Cu Mine. Expose 10x/100 sec              | 9.6.24  | 564 |
| <a href="#">Page 47</a> | 21.4.1 | J & C Wooff on Steamer on Coniston Lake                                    | 10.6.24 | 565 |
| <a href="#">Page 47</a> | 21.4.2 | O'Malley on Steamer on Coniston Lake                                       | 10.6.24 | 566 |
| <a href="#">Page 48</a> | 21.4.3 | J Ransom & J Wooff on Steamer on Coniston Lake                             | 10.6.24 | 567 |
|                         | 21.4.4 | E Ransom etc. on Steamer on Coniston Lake                                  | 10.6.24 | -   |
|                         | 21.4.5 | E Ransom etc. on Steamer on Coniston Lake                                  | 10.6.24 | -   |
| <a href="#">Page 48</a> | 21.4.6 | J Ransom & C Wooff on Steamer on Coniston Lake                             | 10.6.24 | 568 |
| <a href="#">Page 49</a> | 21.5.1 | Bow fell from near Skelwith Bridge 1/25                                    | 11.6.24 | 569 |
| <a href="#">Page 49</a> | 21.5.2 | Wetherlam (left of 568 (1))  | 11.6.24 | 570 |
|                         | 21.5.3 | Skelwith Force from path by riverside 1/10 sun in                          | 11.6.24 | 571 |
|                         | 21.5.4 | Skelwith Force from path by riverside 1/25 sun out                         | 11.6.24 | 572 |
|                         | 21.5.5 | Skelwith Force close up 1/25 (out of focus)                                | 11.6.24 | 573 |
|                         | 21.5.6 | Skelwith Force close up 1/25   | 11.6.24 | 574 |
|                         | 21.6.1 | Langdale Pikes & Dungeon Gill from road nr Skelwith                        | 11.6.24 | 575 |
| <a href="#">Page 51</a> | 21.6.2 | Langdale Pikes & Dungeon Gill from road nr Skelwith from nearer water edge | 11.6.24 | 576 |
| <a href="#">Page 51</a> | 21.6.3 | Wetherlam from road near Skelwith  | 11.6.24 | 577 |
| <a href="#">Page 52</a> | 21.6.4 | Wetherlam from road near Skelwith  | 11.6.24 | 578 |
| <a href="#">Page 52</a> | 21.6.5 | Elterwater & Langdale Pikes  | 11.6.24 | 579 |
| <a href="#">Page 52</a> | 21.6.6 | Harrison Stickle behind woods from path beyond Elterwater                  | 11.6.24 | 580 |
| <a href="#">Page 53</a> | 21.7.1 | Colwith Force  | 11.6.24 | 581 |
| <a href="#">Page 53</a> | 21.7.2 | Colwith Force  | 11.6.24 | 582 |
| <a href="#">Page 54</a> | 21.7.3 | Colwith Force  | 11.6.24 | 583 |
| <a href="#">Page 54</a> | 21.7.4 | Colwith Force  | 11.6.24 | 584 |
| <a href="#">Page 53</a> | 21.7.5 | Colwith Force upper part   | 11.6.24 | 585 |
| <a href="#">Page 54</a> | 21.7.6 | J. Ransom & O'Malley in porch of cottage, Colwith                          | 11.6.24 | 586 |
| <a href="#">Page 55</a> | 21.8.1 | Stockghyll Force 6 sec.f16   | 12.6.24 | 587 |
|                         | 21.8.2 | Stockghyll Force higher up 6sec F16  | 12.6.24 | 588 |
|                         | 21.8.3 | Stockghyll Force higher up 3sec F11  | 12.6.24 | 589 |
| <a href="#">Page 56</a> | 21.8.4 | Falls on church Beck nr Coniston 1/25 F11                                  | 13.6.24 | 590 |

|                         |         |   |             |
|-------------------------|---------|---|-------------|
| <a href="#">Page 56</a> | 21.8.5  | Raven Crag & Holme Fell. Below Coniston & Tilberthwaite               | 13.6.24 591 |
| <a href="#">Page 56</a> | 21.8.6  | Raven Crag & beginning of Tilberthwaite Valley 1/25 F8                | 13.6.24 592 |
|                         | 21.9.1  | Tilberthwaite Valley 1/25 (spoilt in attempted...interes)             | 13.6.24 593 |
| <a href="#">Page 57</a> | 21.9.2  | Tilberthwaite Valley & Stream 1/25                                    | 13.6.24 594 |
| <a href="#">Page 57</a> | 21.9.3  | Tilberthwaite Gill & Stream Lower part 3 x 1/25 F11                   | 13.6.24 595 |
| <a href="#">Page 58</a> | 21.9.4  | Tilberthwaite Gill Top part 4 x 1/25 F11                              | 13.6.24 596 |
| <a href="#">Page 58</a> | 21.9.5  | Wethalam from top of Tilberthwaite Gill                               | 13.6.24 597 |
|                         | 21.9.6  | Langdale Pikes & Povey Ack. From near Wethalam                        | 13.6.24 598 |
|                         | 21.10.1 | To right of 21.9.6 Langdale Pikes & Povey Ack. From near Wethalam     | 13.6.24 599 |
|                         | 21.10.2 | To Right of 21.10.1 Helvellyn to left of hill in foreground           | 13.6.24 600 |
|                         | 21.10.3 | Langdale Pikes  | 13.6.24 601 |
|                         | 21.10.4 | Falls on Greenburn Beck   | 13.6.24 602 |
|                         | 21.10.5 | Falls on Greenburn Beck, Higher up near copper mine (Double Exposure) | 13.6.24 -   |
|                         | 21.10.6 | Little Langdale Tarn & Helvellyn                                      | 13.6.24 603 |
| <a href="#">Page 59</a> | 21.11.1 | Three shire stone & Black Crag  | 13.6.24 604 |
| <a href="#">Page 59</a> | 21.11.2 | JR & O'M Duddon Valley  | 13.6.24 605 |
| <a href="#">Page 60</a> | 21.11.3 | JR & O'M Duddon Valley  | 13.6.24 606 |
| <a href="#">Page 60</a> | 21.11.4 | O'M Duddon Valley   | 13.6.24 607 |
|                         | 21.11.5 | Duddon Valley & River (out of focus)                                  | 13.6.24 -   |
| <a href="#">Page 60</a> | 21.11.6 | Harter Fell   | 13.6.24 608 |
| <a href="#">Page 61</a> | 21.12.1 | Duddon Valley looking up towards Red How                              | 13.6.24 609 |
| <a href="#">Page 61</a> | 21.12.2 | Duddon Valley   | 13.6.24 610 |
| <a href="#">Page 61</a> | 21.12.3 | Duddon Valley   | 13.6.24 611 |
| <a href="#">Page 62</a> | 21.12.4 | Duddon Valley looking up from Barks Bridge                            | 13.6.24 612 |
| <a href="#">Page 62</a> | 21.12.5 | Duddon Valley   | 13.6.24 613 |
|                         | 21.12.6 | Duddon Gorge  | 13.6.24 614 |
|                         | 21.13.2 | Dam & Outlet from Goats water with Dow Craggs ½ sec. F16              | 14.6.24 -   |
|                         | 21.13.2 | Dow Craggs from other side of Goats Water ½ F16                       | 14.6.24 -   |
| <a href="#">Page 63</a> | 21.13.3 | Goats Water, looking upstream ¾ F16                                   | 14.6.24 615 |
| <a href="#">Page 63</a> | 21.13.4 | Goats water, looking downstream showing dam                           | 14.6.24 616 |
|                         | 21.13.5 | Goats water, looking downstream showing dam                           | 14.6.24 617 |
| <a href="#">Page 64</a> | 21.13.6 | Outlet of Goats Water & Falls. Dow Craggs                             | 14.6.24 618 |

## Series 22. Bordeaux etc.



| <b>GA<br/>Album</b>     | <b>PhotoNo</b> | <b>Caption</b>                  | <b>Year</b> | <b>Running<br/>No</b> | <b>Notes</b> |
|-------------------------|----------------|---------------------------------|-------------|-----------------------|--------------|
|                         | 22.1.1         | Sunsets New Cross               | 21.7.24     | 619                   |              |
|                         | 22.1.2         | Sunsets New Cross               | 21.7.24     | -                     |              |
|                         | 22.1.3         | Sunsets New Cross               | ??          | -                     |              |
|                         | 22.1.4         | Sunsets New Cross               | 24.7.24     | -                     |              |
|                         | 22.1.5         | Sunsets New Cross               | 27.4.24     | -                     |              |
|                         | 22.1.6         | Me at Mayfield: Combe Down Bath | 30.7.24     | -                     |              |
|                         | 22.2.1         | Me at Mayfield: Combe Down Bath | 30.7.24     | 620                   |              |
|                         | 22.2.2         | Me at Mayfield: Combe Down Bath | 30.7.24     | 621                   |              |
| <a href="#">Page 66</a> | 22.2.3         | Castle Combe Village & Bridge   | 4.8.24      | 622                   |              |
|                         | 22.2.4         | Old Sodbury                     | 4.8.24      | 623                   |              |
| <a href="#">Page 66</a> | 22.2.5         | Ox Cart Bourg sur Giroude       | 3.9.24      | 624                   |              |

|                         |        |  |         |     |
|-------------------------|--------|--|---------|-----|
| <a href="#">Page 66</a> | 22.2.6 | Quarry Calcaire de Blaye (Lutetean) Blaye  | 3.9.24  | 625 |
| <a href="#">Page 67</a> | 22.3.1 | Cellars Chateau Augone St Emilion  | 4.9.24  | 626 |
| <a href="#">Page 67</a> | 22.3.2 | St Emilion   | 4.9.24  | 627 |
| <a href="#">Page 67</a> | 22.3.3 | Calcaire a Asteries St Emilion   | 4.9.24  | 628 |
| <a href="#">Page 68</a> | 22.3.4 | St Emilion   | 4.9.24  | 629 |
|                         | 22.3.5 | Notice re decombres. St Emilion  | 4.9.24  | -   |
|                         | 22.3.6 | St Emilion & some of party   | 4.9.24  | 630 |
| <a href="#">Page 69</a> | 22.4.1 | River at Pont St Jean  | 4.9.24  | 631 |
| <a href="#">Page 69</a> | 22.4.2 | Bridge at Pont St Jean   | 4.9.24  | 632 |
| <a href="#">Page 70</a> | 22.4.3 | Views near Castillon   | 4.9.24  | 633 |
|                         | 22.4.4 | Caverne prehistorique Grand Moulin Lugasson  | 4.9.24  | -   |
|                         | 22.4.5 | Caverne prehistorique Grand Moulin Lugasson  | 4.9.24  | -   |
| <a href="#">Page 70</a> | 22.4.6 | Allee Convente & Dolmen nr Lugasson  | 4.9.24  | 634 |
|                         | 22.5.1 | Collecting Resin from pines nr. Jamaeliot  | 5.9.24  |     |
| <a href="#">Page 71</a> | 22.5.2 | Party at Chateau Guirand Sauternes   | 5.9.24  | 635 |
| <a href="#">Page 71</a> | 22.5.3 | Helvetian molasse, Carriere du Chateau Leyre Salles  | 9.9.24  | 636 |
|                         | 22.5.4 | Helvetian molasse, Carriere du Chateau Leyre Salles  | 9.9.24  |     |
|                         | 22.5.5 | Helvetian molasse, Carriere du Chateau Leyre Salles  | 9.9.24  | 637 |
| <a href="#">Page 72</a> | 22.5.6 | Tram & Motor Cap Ferret  | 10.9.24 | 638 |
|                         | 22.6.1 | Artesian Well Abatilles near Arcachon  | 10.9.24 |     |
|                         | 22.6.2 | Artesian Well Abatilles near Arcachon  | 10.9.24 |     |
|                         | 22.6.3 | Artesian Well Abatilles near Arcachon  | 10.9.24 |     |
| <a href="#">Page 73</a> | 22.6.4 | Colomnes Rostrales. Quinconces Bordeaux  | 12.9.24 | 639 |
| <a href="#">Page 74</a> | 22.6.5 | Cliffs Folkestone Warren   | 19.9.24 | 640 |
| <a href="#">Page 74</a> | 22.6.6 | Cliffs Folkestone Warren   | 19.9.24 | 641 |
|                         | 22.7.1 | Views from zig-zag path near Folkestone Warren Station mostly spoilt by attempt to wind film back after over winding it. | 19.9.24 |     |
|                         | 22.7.2 | Views from zig-zag path near Folkestone Warren Station mostly spoilt by attempt to wind film back after over winding it. | 19.9.24 |     |
|                         | 22.7.3 | Views from zig-zag path near Folkestone Warren Station mostly spoilt by attempt to wind film back after over winding it. | 19.9.24 |     |
|                         | 22.7.4 | Views from zig-zag path near Folkestone Warren Station mostly spoilt by attempt to wind film back after over winding it. | 19.9.24 |     |
|                         | 22.7.5 | Views from zig-zag path near Folkestone Warren Station mostly spoilt by attempt to wind film back after over winding it. | 19.9.24 |     |
| <a href="#">Page 75</a> | 22.7.6 | Views from zig-zag path near Folkestone Warren Station   | 19.9.24 | 642 |
|                         |        | Photographs: Series 23 Austwick, Carmarthen, Canterbury  | 1925    |     |



## Series 23. Austwick, Carmarthen, Canterbury, 1925



Cliffs between  
Herne Bay &  
Reculver.  
London Clay on  
Oldhaven Beds



Current Bedded  
Folkestone  
Sands. Pit near  
Sandhurst Farm,  
Kennington  
(Padgham's Pit)



Caves in Carb  
Lst  
Conglomerate  
Pendine



•  
Helwith Bridge  
Quarry, Horton  
Flags



•  
Stonehenge



•  
Tombstone in  
Winchester  
Cathedral  
grounds (23.10.6  
in the photos)

| GA<br>Album             | PhotoNo | Caption  | Year   | Running<br>No | Notes |
|-------------------------|---------|--|--------|---------------|-------|
| <a href="#">Page 77</a> | 23.1.1  | Helwith Bridge Quarry, Horton Flags  | 5.1.25 | 643           |       |
|                         | 23.1.2  | Helwith Bridge Quarry Horton Flags Quarry  | 5.1.25 | -             |       |
| <a href="#">Page 77</a> | 23.1.3  | Cleavage & Bedding at High Angle in grit.<br>Crummach Dale Fell and in Trilobite Beds                                  | 5.1.25 | 644           |       |
| <a href="#">Page 78</a> | 23.1.4  | Cleavage & Bedding at High Angle in grit.<br>Crummach Dale Fell and in Trilobite Beds                                  | 5.1.25 | 645           |       |
|                         | 23.1.5  | Bedding (downhill) & Cleavage (facing out)<br>Austwick grit. Lst on top. Right hand side of<br>Crummach Dale (upwards) | 5.1.25 | 646           |       |
|                         | 23.1.6  | Studrigs Scar from same point. Cleavage facing<br>out of hillside  | 6.1.25 | 647           |       |
|                         | 23.2.1  | Grikes and Pen y Gent from top of Crummach Dale  | 6.1.25 | 648           |       |

|                         |        |   |         |     |
|-------------------------|--------|---|---------|-----|
|                         | 23.2.2 | Grikes from top of Crummach Dale  | 6.1.25  | 649 |
|                         | 23.2.3 | Occultation of Aldebaran by Moon  | 2.2.25  | -   |
|                         | 23.2.4 | Unexposed   |         | -   |
|                         | 23.2.5 | Spoilt  |         | -   |
|                         | 23.2.6 | Tremadoc shales (supposed) stream near Cwmffrwd   | 10.4.25 | 650 |
| <a href="#">Page 79</a> | 23.3.1 | G.A.Party Carmarthen Town Hall  | 10.4.25 | 651 |
|                         | 23.3.2 | Castle Hill Dryslwyn with G.A.Party   | 11.4.25 | 652 |
|                         | 23.3.3 | Castle Hill Dryslwyn  | 11.4.25 | 653 |
|                         | 23.3.4 | Strip system of cultivation near Lougharne  | 12.4.25 | 654 |
| <a href="#">Page 80</a> | 23.3.5 | Colgen quarry Lougharne (Carb. Lst)   | 12.4.25 | 655 |
|                         | 23.3.6 | Ancient Shore Line (O.R.S.) from top of Coygen (Colgen?) quarry   | 12.4.25 | 656 |
| <a href="#">Page 81</a> | 23.4.1 | Carb. Limestone conglomerate etc. Cliff Pendine   | 12.4.25 | 657 |
| <a href="#">Page 81</a> | 23.4.2 | Caves in Carb Lst Conglomerate Pendine  | 12.4.25 | 658 |
|                         | 23.4.3 | Cliffs between Pendine and Ragwen Point. Looking towards Pendine  | 12.4.25 | 659 |
| <a href="#">Page 82</a> | 23.4.4 | Cliffs between Pendine and Ragwen Point. Looking towards Pendine  | 12.4.25 | 660 |
|                         | 23.4.5 | Cliffs between Pendine and Ragwen Point. Looking towards Pendine  | 12.4.25 | 661 |
|                         | 23.4.6 | Ragwen Point  | 12.4.25 |     |
|                         | 23.5.1 | Junction of Millstone grit (shales) and Carb Limestone. Near Ragwen point (Cox & O T James)   | 12.4.25 | 662 |
|                         | 23.5.2 | Junction of Millstone grit (shales) and Carb Limestone. Near Ragwen point (Cox & O T James)   | 12.4.25 | 663 |
|                         | 23.5.3 | Junction of Millstone grit (shales) and Carb Limestone. Near Ragwen point (Cox & O T James)   | 12.4.25 | 664 |
|                         | 23.5.4 | Mydrim limestone under church Mydrim  | 14.4.25 | 665 |
|                         | 23.5.5 | Views Approx. N from road near Pont-Nant ring showing water erosion on slopes   | 15.4.25 | 666 |
|                         | 23.5.6 | Views Approx. N from road near Pont-Nant ring showing water erosion on slopes   | 15.4.25 | 667 |
| <a href="#">Page 83</a> | 23.6.1 | Canterbury Cathedral unusual view   | 30.5.25 | 668 |
|                         | 23.6.2 | "Mud Glacier" London Clay Herne Bay Cliffs  | 31.5.25 | -   |
|                         | 23.6.3 | "Mud Glacier" London Clay Herne Bay Cliffs  | 31.5.25 | -   |
| <a href="#">Page 83</a> | 23.6.4 | Fault in shell band in Oldhaven beds Herne Bay  | 31.5.25 | 669 |
| <a href="#">Page 84</a> | 23.6.5 | Cliffs between Herne Bay & Reculver. London Clay on Oldhaven Beds   | 31.5.25 | 670 |
| <a href="#">Page 84</a> | 23.6.6 | Cliffs between Herne Bay & Reculver. London Clay on Oldhaven Beds   | 31.5.25 | 671 |
| <a href="#">Page 85</a> | 23.7.1 | Pit in Folkestone Sands, base current bedded. Top wedge bedded. Top probably mamucclatus. Behind Woolpack near Smeeth (?Brabourne Lees) | 1.6.25  | 672 |
|                         | 23.7.2 | Pit in Folkestone Sands, base current bedded. Top wedge bedded. Top probably mamucclatus. Behind Woolpack near Smeeth (?Brabourne Lees) | 1.6.25  | 673 |

|   |         |  |         |     |
|---|---------|--|---------|-----|
| <a href="#">Page 85</a>                                     | 23.7.3  | Hythe beds with Laticular Sandygate at top.<br>Chelasington Ju.  | 1.6.25  | 674 |
| <a href="#">Page 86</a>                                     | 23.7.4  | Monocline Weald Clay S of Ashford Station  | 1.6.25  | 675 |
| <a href="#">Page 86</a>                                     | 23.7.5  | Current bedding in Folkestone Sands near<br>Sandhurst Farm Remmington (Same Eastwell<br>Lane)                  | 1.6.25  | 676 |
|   | 23.7.6  | Current bedding in Folkestone Sands near<br>Sandhurst Farm Kennington (Same Eastwell Lane)                     | 1.6.25  | 677 |
|   | 23.8.1  | Current Bedded Folkestone Sands. Pit near<br>Sandhurst Farm, Kennington (Padgham's Pit)                        | 1.6.25  | 678 |
|   | 23.8.2  | Current Bedded Folkestone Sands. Pit near<br>Sandhurst Farm, Kennington (Padgham's Pit)                        | 1.6.25  | 679 |
|   | 23.8.3  | Current Bedded Folkestone Sands. Pit near<br>Sandhurst Farm, Kennington (Padgham's Pit)                        | 1.6.25  | 680 |
|   | 23.8.4  | Current Bedded Folkestone Sands. Pit near<br>Sandhurst Farm, Kennington (Padgham's Pit)                        | 1.6.25  | 681 |
|   | 23.8.5  | Current Bedded Folkestone Sands. Pit near<br>Sandhurst Farm, Kennington (Padgham's Pit)                        | 1.6.25  | 682 |
|   | 23.8.6  | Current Bedded Folkestone Sands. Pit near<br>Sandhurst Farm, Kennington (Padgham's Pit)                        | 1.6.25  | -   |
| <b>Photographs Series 23 (cont'd) Stonehenge<br/>Bacton</b> |         |  |         |     |
| <a href="#">Page 87</a>                                     | 23.9.1  | Stonehenge   | 12.6.25 | 683 |
| <a href="#">Page 87</a>                                     | 23.9.2  | Stonehenge   | 12.6.25 | 684 |
| <a href="#">Page 88</a>                                     | 23.9.3  | Stonehenge   | 12.6.25 | 685 |
| <a href="#">Page 87</a>                                     | 23.9.4  | Stonehenge   | 12.6.25 | 686 |
| <a href="#">Page 88</a>                                     | 23.9.5  | Stonehenge   | 12.6.25 | 687 |
| <a href="#">Page 88</a>                                     | 23.9.6  | Stonehenge   | 12.6.25 | 688 |
| <a href="#">Page 89</a>                                     | 23.10.1 | Cliffs at Bacton. Ground above Sand below  | 13.6.25 | 689 |
|   | 23.10.2 | Piece of Bacton clay shoved up by Landslip nr<br>Bacton Cliff  | 13.6.25 | 690 |
|   | 23.10.3 | Piece of Bacton sand clay shoved up by Landslip nr<br>Bacton Cliff   | 13.6.25 | 691 |
| <a href="#">Page 90</a>                                     | 23.10.4 | Tombstone in Winchester Cathedral grounds<br>(23.10.6 in the photos)   | 14.6.25 | 692 |
|   | 23.10.5 | Elsie & Arthur Reed Clacton  | 18.7.25 | -   |
| <a href="#">Page 90</a>                                     | 23.10.6 | Rotter in camp (Negs handed over to Rotter) in<br>notebook is 23.10.4 in photos Elsie & Arthur Reed<br>Clacton | 3.8.25  |     |
| <a href="#">Page 91</a>                                     | 23.11.1 | Rotter in camp (Negs handed over to Rotter)  | 3.8.25  |     |
| <a href="#">Page 91</a>                                     | 23.11.2 | Rotter in camp (Negs handed over to Rotter)  | 3.8.25  |     |
| <a href="#">Page 91</a>                                     | 23.11.3 | Rotter in camp (Negs handed over to Rotter)  | 3.8.25  |     |
| <a href="#">Page 92</a>                                     | 23.11.4 | Rotter in camp (Negs handed over to Rotter)  | 3.8.25  |     |
| <a href="#">Page 92</a>                                     | 23.11.5 | Rotter in camp (Negs handed over to Rotter)  | 3.8.25  |     |
|   | 23.11.6 | Rotter in camp (Negs handed over to Rotter)  | 3.8.25  |     |

## Series 24. Prague



Rock on Vltava  
from boat  
(downstream)



Phonolite dyke  
in Nepheline  
basalt.  
Topkowitz



Gabbro dykes  
in Turonian marl  
Katzenstein



Excavator at

work. Hedvika  
mine. Ervenice  
(=Saestadt) Nr.  
Most (Brux)



Junc.  
Waulsortian &  
Yvoir Limestone  
Hastiere Bridge



Monocline Carb.  
Lst. Meuse  
between  
Hastiere &  
Waulsort



Carb Limestone  
near Godinnes  
looking towards  
Yvoir



Dip slope of  
Lower zone of  
Middle  
Devonian.  
Alternate Lst  
and Shale,  
Quarry nr  
Hlubocefy



Contorted  
Silurian  
limestone with  
Limestones  
(Downtonian) nr  
Chuchle. Along  
riverside  
towards Praha  
Near Memorial  
to "Barrande"



Folding in  
massive reef  
limestone a little  
further down  
Along riverside  
towards Praha  
Near Memorial

to "Barrande"



Geol. Assn. Party  
at top of path  
leading to rapids  
from Stechovice



Party on barge  
before shooting  
rapids

| GA Album                | PhotoNo | Caption   | Year    | Running No | Notes |
|-------------------------|---------|---|---------|------------|-------|
|                         | 24.1.1  | Unconformity of Ordovician & Cretaceous beds. About half way between Kosire and Motol. From Railway Line                                  | 14.9.25 | -          |       |
| <a href="#">Page 93</a> | 24.1.2  | Unconformity of Ordovician & Cretaceous beds. About half way between Kosire and Motol. From Railway Line                                  | 14.9.25 | 693        |       |
| <a href="#">Page 93</a> | 24.1.3  | Lower zone of Middle Devonian. Alternate Lst and Shale nr Hlubocefy   | 15.9.25 | 694        |       |
| <a href="#">Page 93</a> | 24.1.4  | Dip slope of Lower zone of Middle Devonian. Alternate Lst and Shale, Quarry nr Hlubocefy  | 15.9.25 | 695        |       |
| <a href="#">Page 94</a> | 24.1.5  | "Relief Augen" in echelon due to torsion by pitching syncline Lower zone of Middle Devonian. Alternate Lst and Shale, Quarry nr Hlubocefy | 15.9.25 | 696        |       |
| <a href="#">Page 94</a> | 24.1.6  | Fault. Thick bed on left = exposed face on right Hlubocefy  | 15.9.25 | 697        |       |
| <a href="#">Page 95</a> | 24.2.1  | Hlubocefy with viaduct & vertical Devonian Limestone  | 15.9.25 | 698        |       |
| <a href="#">Page 95</a> | 24.2.2  | Fault in Devonian Limestone at Hlubocefy  | 15.9.25 | 699        |       |
| <a href="#">Page 95</a> | 24.2.3  | Fault in Devonian Limestone at Hlubocefy  | 15.9.25 | 700        |       |
| <a href="#">Page 96</a> | 24.2.4  | Fault in Devonian Limestone at Hlubocefy  | 15.9.25 | 701        |       |



|                          |        |  |              |
|--------------------------|--------|--|--------------|
| <a href="#">Page 96</a>  | 24.2.5 | Lobolite bed. Ludlow horion Nr Chuchle   | 15.9.25 702  |
|                          |        | Contorted Silurian limestone with Limestones   |              |
| <a href="#">Page 96</a>  | 24.2.6 | (Downtonian) nr Chuchle. Along riverside towards Praha Near Memorial to "Barrande"         | 15.9.25 703  |
|                          |        | Contorted Silurian limestone with Limestones   |              |
| <a href="#">Page 97</a>  | 24.3.1 | (Downtonian) nr Chuchle. Along riverside towards Praha Near Memorial to "Barrande"         | 15.9.25 704  |
|                          |        | Contorted Silurian limestone with Limestones   |              |
| <a href="#">Page 97</a>  | 24.3.2 | (Downtonian) nr Chuchle. Along riverside towards Praha Near Memorial to "Barrande"         | 15.9.25 705  |
|                          |        | Nodular Devonian Limestone a few yards down  |              |
|                          | 24.3.3 | Along riverside towards Praha Near Memorial to "Barrande"                                  | 15.9.25 706  |
|                          |        | Nodular Devonian Limestone a few yards down  |              |
| <a href="#">Page 98</a>  | 24.3.4 | Along riverside towards Praha Near Memorial to "Barrande"                                  | 15.9.25 706a |
|                          |        | Folding in massive reef limestone a little further down                                    |              |
| <a href="#">Page 98</a>  | 24.3.5 | Along riverside towards Praha Near Memorial to "Barrande"                                  | 15.9.25 707  |
|                          |        | Limestone across river from Zlichov  |              |
| <a href="#">Page 99</a>  | 24.3.6 |  | 15.9.25 708  |
|                          | 24.4.1 | Upstream from Hostim   | 16.9.25 709  |
|                          | 24.4.2 | Hostim valley upstream   | 16.9.25 710  |
| <a href="#">Page 99</a>  | 24.4.3 | Hostim Valley downstream   | 16.9.25 711  |
|                          | 24.4.4 | Rock on Berounka river near entrance to Hostim Valley ?Devonian                            | 16.9.25 712  |
| <a href="#">Page 100</a> | 24.4.5 | Folded beds near bridge Kailuo Tyn (Karluo Tyn = Karlstein)                                | 16.9.25 713  |
|                          | 24.4.6 | Up river Berounka from bridge Karluo Tyn (Karluo Tyn = Karlstein)                          | 16.9.25 714  |
| <a href="#">Page 101</a> | 24.5.1 | DoronVltava from Stechovice. Algonkian rocks   | 17.9.25 715  |
| <a href="#">Page 101</a> | 24.5.2 | Up river from Stechovice. Algonkian rocks  | 17.9.25 716  |
|                          | 24.5.3 | Geol. Assn. Party at top of path leading to rapids from Stechovice out of focus            | 17.9.25 717a |
| <a href="#">Page 101</a> | 24.5.4 | Geol. Assn. Party at top of path leading to rapids from Stechovice                         | 17.9.25 717  |
|                          | 24.5.5 | Downstream from barge landing stage for currents   | 17.9.25 718  |
| <a href="#">Page 102</a> | 24.5.6 | Party on barge before shooting rapids  | 17.9.25 719  |
| <a href="#">Page 103</a> | 24.6.1 | Along Jirska (Praha) with St Vitus tower at end (film overwound. Rolled back to 1 after 4) | 20.9.25 720  |
| <a href="#">Page 103</a> | 24.6.2 | Rock on Vltava from boat (downstream)  | 17.9.25 721  |
| <a href="#">Page 103</a> | 24.6.3 | Scenery on the St John currents (Svatojarsky Proudly)                                      | 17.9.25 722  |
|                          | 24.6.4 | Scenery on the St John currents (Svatojarsky Proudly)                                      | 17.9.25 723  |
| <a href="#">Page 104</a> | 24.6.5 | V. Daliborka (Praha) & Alchemists row  | 20.9.25 724  |
|                          | 24.6.6 | Cathedral "Frffd" Tower etc. from battlements Praha  | 20.9.25 725  |

|                          |         |   |             |
|--------------------------|---------|---|-------------|
|                          | 24.7.1  | Towards Klotzberg from top of Donnersberg (Milesovka)   | 21.9.25 726 |
| <a href="#">Page 105</a> | 24.7.2  | Donnersberg (Milesovka) from near base  | 21.9.25 727 |
| <a href="#">Page 105</a> | 24.7.3  | Phonolite dyke in Nepheline basalt. Topkowitz   | 22.9.25 728 |
| <a href="#">Page 106</a> | 24.7.4  | Czechoslovakian train nr Topkowitz 1/50   | 22.9.25 729 |
|                          | 24.7.5  | Across Elbe towards Sperlingstein from nr Topkowitz Sperlingstein & Denuded sodalite-tephrite | 22.9.25 730 |
|                          | 24.7.6  | Across Elbe towards Sperlingstein from nr Topkowitz Sperlingstein & Denuded sodalite-tephrite | 22.9.25 731 |
| <a href="#">Page 107</a> | 24.8.1  | Gantcite dykes in Turonian marl Katzenstein   | 22.9.5 732  |
| <a href="#">Page 107</a> | 24.8.2  | Across Elbe near Rongstock (Roztoky)  | 22.9.25 733 |
| <a href="#">Page 107</a> | 24.8.3  | Eyed houses Rongstock   | 22.9.25 734 |
| <a href="#">Page 108</a> | 24.8.4  | Brown coal upper (impure) seam Hedvika mine Ervenice near Most                                | 23.9.25 735 |
| <a href="#">Page 108</a> | 24.8.5  | Brown coal upper (impure) seam Hedvika mine Ervenice near Most                                | 23.9.25 736 |
| <a href="#">Page 108</a> | 24.8.6  | Excavator at work. Hedvika mine. Ervenice (=Saestadt) Nr. Most (Brux)                         | 23.9.25 737 |
| <a href="#">Page 109</a> | 24.9.1  | Smoking tip heaps Hedvika brown coal mine Ervenice  | 23.9.25 738 |
| <a href="#">Page 109</a> | 24.9.2  | Upper coal seam. Hedvika mine Ervenice  | 23.9.25 739 |
| <a href="#">Page 109</a> | 24.9.3  | Excavator at work. Hedvidka mine Ervenice   | 23.9.25 740 |
| <a href="#">Page 110</a> | 24.9.4  | Close up of upper (clayey) beds at Hedvika  | 23.9.25 741 |
|                          | 24.9.5  | Usti Ladies loading brown coal from trucks to barges  | 24.9.25 -   |
|                          | 24.9.6  | Marcanska Itora quarry Usti from boat   | 24.9.25 742 |
|                          | 24.10.1 | Hill at GrossPriesen from nr Veseli (Weasely)   | 24.9.25 743 |
| <a href="#">Page 111</a> | 24.10.2 | Podmokly Susp. Bridge & Castle the Schaferwand from Decin                                     | 24.9.25 744 |
|                          | 24.10.3 | One Horse drozka at Decin bringing luggage  | 24.9.25 745 |
| <a href="#">Page 111</a> | 24.10.4 | Junc. Waulsortian & Yvoir Limestone Hastiere Bridge   | 30.9.25 746 |
| <a href="#">Page 112</a> | 24.10.5 | Carb. Lst. Crag. Down Meuse from near Hastiere bridge   | 30.9.25 747 |
| <a href="#">Page 112</a> | 24.10.6 | Down Meuse from about 1km below Hastiere. Stagnant water in bend of river shown by reeds      | 30.9.25 748 |
| <a href="#">Page 113</a> | 24.11.1 | Monocline Carb. Lst. Meuse between Hastiere & Waulsort  | 30.9.25 749 |
|                          | 24.11.2 | Faulting & Folding in Carb limestone. Meuse bank near Waulsort                                | 30.9.25 750 |
| <a href="#">Page 113</a> | 24.11.3 | Faulting & Folding in Carb limestone. Meuse bank near Waulsort                                | 30.9.25 751 |
| <a href="#">Page 114</a> | 24.11.4 | Meuse bank opposite to Waulsort from Rock   | 30.9.25 752 |
|                          | 24.11.5 | Opposite Waulsort downstream 6sec. F32. 5pm   | 30.9.25 753 |
|                          | 24.11.6 | Views from tower of Mont-Fat f7.7 x6screen Divnant Belgium                                    | 2.10.25 -   |

|                          |         |  |              |
|--------------------------|---------|--|--------------|
|                          | 24.12.1 | Views from tower of Mont-Fat f32 x6screen<br>Divnant Belgium   | 2.10.25 754  |
|                          | 24.12.2 | Up river from citadelle F32 x 6 screen (rather<br>hazy day)  | 2.10.25 755  |
|                          | 24.12.3 | Downriver from citadelle F32 x 6 screen (rather<br>hazy day)   | 2.10.25 756  |
|                          | 24.12.4 | Meuse from station side of bank. Citadel and<br>church F32 x 6 screen  | 2.10.25 757  |
|                          | 24.12.5 | Meuse from station side of bank. Citadel and<br>church F32 x 6 screen  | 2.10.25 757a |
|                          | 24.12.6 | Contorted Carb. Lst. Near shrine near station at<br>Houx   | 3.10.25 758  |
|                          | 24.13.1 | Island in Meuse. Yvoir. Downstream from near<br>bridge, station side   | 3.10.25 759  |
|                          | 24.13.2 | Downstream from Yoir just above river<br>f32x6screen   | 3.10.25 760  |
|                          | 24.13.3 | Downstream from Yoir just above river 1/25 f7.7<br>without screen for comparison                             | 3.10.25 760a |
| <a href="#">Page 116</a> | 24.13.4 | Carb Limestone near Godinnes looking towards<br>Yvoir  | 3.10.25 761  |
| <a href="#">Page 116</a> | 24.13.5 | Carb Lst. Nr railway tunnel on Godinnes Yvoir<br>Road (nr Godinnes looking upstream 7 sec. X 6<br>screen f32 | 3.10.25 762  |
|                          | 24.13.6 | Church & river at Godinnes Very Misty. 60 sec f32<br>x 6 screen 5.50pm                                       | 3.10.25 763  |
|                          | 24.14.1 | Belfrey Bruges. Sun & cloud behind   | 5.10.25 764  |
|                          | 24.14.2 | Canal from bridge Quai Vert & Q des Marbieres  | 5.10.25 765  |
| <a href="#">Page 117</a> | 24.14.3 | Towards Belfry from Quai Vert 4 to left of 3<br>(stereoscopic) Bruges  | 5.10.25 766  |
| <a href="#">Page 117</a> | 24.14.4 | Towards Belfry from Quai Vert 4 to left of 3<br>(stereoscopic) Bruges  | 5.10.25 766a |
|                          | 24.14.5 | Minnewater & Notre Dame from bridge on<br>ramparts   | 5.10.25 767  |
| <a href="#">Page 118</a> | 24.15.6 | Porte De Marechal with tram. Bruges  | 5.10.25 768  |

Retrieved from

[http://earthwise.bgs.ac.uk/index.php?title=Elsie\\_Giles\\_photographs:\\_Series\\_18-24.\\_1922-1925\\_-\\_index,\\_GA\\_%27Carreck\\_Archive%27&oldid=50241](http://earthwise.bgs.ac.uk/index.php?title=Elsie_Giles_photographs:_Series_18-24._1922-1925_-_index,_GA_%27Carreck_Archive%27&oldid=50241)

[Category](#):

- [Geologists' Association Carreck Archive, indexes](#)

## Navigation menu

### Personal tools

- Not logged in
- [Talk](#)
- [Contributions](#)

- [Log in](#)
- [Request account](#)

## Namespaces

- [Page](#)
- [Discussion](#)

## Variants

## Views

- [Read](#)
- [Edit](#)
- [View history](#)
- [PDF Export](#)

## More

## Search

## Navigation

- [Main page](#)
- [Recent changes](#)
- [Random page](#)
- [Help about MediaWiki](#)

## Tools

- [What links here](#)
- [Related changes](#)
- [Special pages](#)
- [Permanent link](#)
- [Page information](#)
- [Cite this page](#)
- [Browse properties](#)

- This page was last modified on 19 September 2020, at 16:16.

- [Privacy policy](#)
- [About Earthwise](#)
- [Disclaimers](#)



•



•

