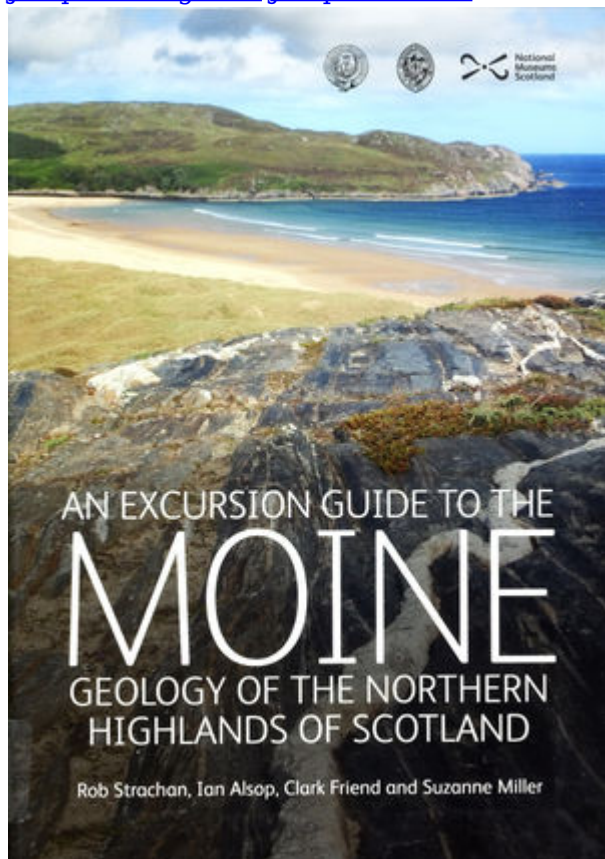


Excursion guide to the Moine geology of the Northern Highlands of Scotland

From Earthwise

[Jump to navigation](#) [Jump to search](#)



Buy the book: [EGS](#)

From: Strachan, Rob, Friend, Clark, Alsop, Ian, Miller, Suzanne (Editors). A Geological excursion guide to the Moine geology of the Northern Highlands of Scotland.: Edinburgh Geological Society, Glasgow Geological Society in association with NMS Enterprises, 2010.

□

Contents

- [1 Contents](#)
- [2 Summary of the Moine geology of the Northern Highlands of Scotland](#)
- [3 Excursion 1 Ross of Mull](#)
 - [3.1 Itinerary A. Eastern limb of the Assapol Synform \(1\)](#)
 - [3.2 Itinerary B. Eastern limb of the Assapol Synform \(2\)](#)
 - [3.3 Itinerary C. Structure and lithologies within the Ardanish Striped and Banded Formation, western limb of the Assapol Synform](#)
 - [3.4 Itinerary D. Western limb and core of the Assapol Synform](#)
- [4 Excursion 2 Fort William to Glenfinnan](#)
- [5 Excursion 3 Glenfinnan to Morar](#)

- [5.1 High grade rocks of the 'vertical' belt](#)
- [5.2 Western margin of the vertical belt and low grade rocks of the western 'flat' belt](#)
- [6 Excursion 4 Invergarry to Kinloch Hourn](#)
 - [6.1 Loch Garry to Loch Quoich dam](#)
 - [6.2 Loch Quoich shore section](#)
 - [6.3 Quoich Bridge, westwards](#)
- [7 Excursion 5 Glen Moriston and Glen Shiel](#)
 - [7.1 Glen Moriston](#)
 - [7.2 Glen Sheil](#)
- [8 Excursion 6 West Glenelg and Loch Hourn](#)
 - [8.1 West Glenelg](#)
 - [8.2 Loch Hourn region](#)
- [9 Excursion 7 East Glenelg and Loch Duich](#)
 - [9.1 East Glenelg](#)
 - [9.2 Loch Duich](#)
- [10 Excursion 8 Glen Strathfarrar and Loch Monar](#)
- [11 Excursion 9 Loch a' Bhraoin, Braemore and Loch Broom](#)
 - [11.1 The Sgurr Beag Thrust section](#)
 - [11.2 Option A. Meall an t Sithe](#)
 - [11.3 Option B. Corrieshalloch Gorge and Loch Broom](#)
- [12 Excursion 10 South and Central Sutherland](#)
 - [12.1 South Sutherland](#)
 - [12.2 Central Sutherland](#)
- [13 Excursion 11 The Moine Thrust Belt at Loch Eriboll](#)
 - [13.1 Transect 1: South Eriboll](#)
 - [13.2 Transect 2: Arnaboll](#)
 - [13.3 Transect 3: Kempie](#)
 - [13.4 Transect 4: Creagan Road](#)
- [14 Excursion 12 Durness and Faraid Head](#)
 - [14.1 Durness](#)
 - [14.2 Faraid Head](#)
- [15 Excursion 13 North Sutherland](#)
 - [15.1 The Melness area](#)
 - [15.2 South and east side of Tongue Bay](#)
 - [15.3 Loch Cormaic and Borgie peat cuts](#)
 - [15.4 Torrisdale Bay](#)
 - [15.5 Craig Ruadh to Glaisgeo](#)
 - [15.6 Swordly Bay, Kirtomy Bay and Cnoc Mor](#)
 - [15.7 Port Mor to Portskerra](#)
- [16 Excursion 14 Great Glen](#)
- [17 Foreword](#)
- [18 Editorial introduction](#)
- [19 References](#)

Contents

Summary of the Moine geology of the Northern Highlands of

Scotland

Excursion 1 Ross of Mull

Itinerary A. Eastern limb of the Assapol Synform (1)

Locality 1.1 Viewpoint of the regional and local geology.

Locality 1.2 Upper Shiaba Psammite with cross bedding and heavy mineral bands [NM 4425 1893]

Locality 1.3 Shiaba Group lithologies; Tertiary intrusions and faulting. [NM 4452 1898]

Locality 1.4 Folds within the Lower Shiaba Psammite. [NM 442 185]

Locality 1.5 F_2 sheath folds within the Lower Shiaba Psammite. [NM 4410 1841]

Locality 1.6 Sedimentary and tectonic structures within the Upper Shiaba Psammite. [NM 436 183]

Locality 1.7 Upper Shiaba Psammite cut by Tertiary dolerite. [NM 4365 1805]

Itinerary B. Eastern limb of the Assapol Synform (2)

Locality 1.8 Geological viewpoint. [NM 4208 1884]

Locality 1.9 S_0/S_2 relationships within the Ardalanish Striped and Banded Formation. [NM 4215 1882]

Locality 1.10 Scoor Pelitic Gneiss. [NM 4214 1876]

Locality 1.11 S_0/S_2 relationships within the Scoor Pelitic Gneiss; Tertiary intrusion. [NM 4231 1873]

Locality 1.12 Top of the Lagan Mor Formation. [NM 4229 1854]

Locality 1.13 Transition from the Lagan Mor Formation into the Upper Shiaba Psammite. [NM 4251 1834]

Locality 1.14 F_2/F_3 relationships within the Ardalanish Striped and Banded Formation on the eastern limb of the F3 Assapol Synform. [NM 4165 1847]

Itinerary C. Structure and lithologies within the Ardalanish Striped and Banded Formation, western limb of the Assapol Synform

Locality 1.15 Regional and contact metamorphism of the Assapol Group Moine. [NM 3753 1884]

Locality 1.16 Migmatitic fabrics and polyphase folds. [NM 3772 1876]

Locality 1.17 Garnetiferous amphibolites. [NM 3778 1870]

Locality 1.18 Relationships between amphibolites and host metasediments. [NM 3805 1855]

Locality 1.19 East verging F_3 folds. [NM 3816 1837]

Locality 1.20 F_3 folds. [NM 3824 1832]

Itinerary D. Western limb and core of the Assapol Synform

Locality 1.21 Hinge and eastern limb of F_3 antiform. [NM 384 183] to [NM 398 188] ==

Locality 1.22 Discordant amphibolite and F_2/F_3 structures. [NM 3965 1864]

Locality 1.23 Hinge zone of the F_3 Assapol Synform. [NM 3980 1885] to [NM 4100 1880]

Locality 1.24 Contact metamorphic phenomena within the aureole of the Ross of Mull Granite. Distance is less than 1km, taking c.1 hour. [NM 365 217]

Locality 1.25 Margin of the Ross of Mull Granite. Distance from Ardalanish and return is c.4km, taking 3 hours. [NM 3680 1765]

Excursion 2 Fort William to Glenfinnan

Locality 2.1 Loch Eil shore section. Loch Eil Psammite intruded by amphibolites. [NN 057 784]

Locality 2.2 Fassfern. Sedimentary structures within the Druim Fada Quartzite; microdiorite intrusions within the Loch Eil Psammite. [NN 0215 7895]

Locality 2.3 Loch Eil road section. Calc silicates in Loch Eil Psammite; late granite veins. [NM 988 788]

Locality 2.4 Kinlocheil. Psammites and hornblende schists of the Loch Eil Group; pelitic gneisses of the Glenfinnan Group. [NM 962 793]

Locality 2.5 Callop road section. Flat lying Ardgor Granite Gneiss with S_2 fabric and quartzofeldspathic lites; microdiorite sheet; D_2 folds in flat belt. [NM925 794]

Locality 2.6 Craigag road section. Amphibolites and pygmatic folds in granitic gneiss. [NM 922 796]

Locality 2.7 Allt na Criche road section. Low strain zone in centre of granitic gneiss sheet. [NM 919 799]

Locality 2.8 Glenfinnan road section. Loch Quoich Line; minor intrusions; western margin of the granitic gneiss; steep belt. [NM 916 802]

Locality 2.9 Glenfinnan road section. Loch Eil Group psammites within the steep belt. [NM 909 804]

Excursion 3 Glenfinnan to Morar

High grade rocks of the 'vertical' belt

Locality 3.1 The Muidhe. Glenfinnan Group psammities, pelites and migmatites; pegmatites; microdiorite sheets. [NM 857 815]

Locality 3.2 The Loch Eilt Antiform eastern limb. Glenfinnan Group pelites; Morar Group psammities and pelites; Sgurr Beag Thrust Zone. [NM 828 821] to [817 824]

Locality 3.3 Morarian (= Knoydartian) pegmatites at Loch Eilt [NM 806 827]

Locality 3.4 The Glenshian Synform and the Sgurr Beag Thrust [NM 789 828] to [NM 777 830]

Western margin of the vertical belt and low grade rocks of the western 'flat' belt

Locality 3.5 The western limb of the Glenshian Synform [NM 7675 8236] to [NM 7570 8260]

Locality 3.6 The Ardnish Synform [NM 7478 8305] to [NM 7401 8330]

Locality 3.7 The Arnipol Slide Zone [NM7421 8370] to [NM 7438 8430]

Locality 3.8 The Upper Morar Psammite: Rhue peninsula [NM 1613 7842]

Locality 3.9 The Upper Morar Psammite: Morar Bay [NM 1668 7933]

Excursion 4 Invergarry to Kinloch Hourn

Loch Garry to Loch Quoich dam

Locality 4.1 Garry Quarry [NH 196 023]

Locality 4.2 Coir' an t Seasgaich [NH 076 035]

Locality 4.3 Quoich dam spillway [NH 071 023]

Locality 4.4 Quoich Quarry [NH 062 018]

Loch Quoich shore section

Locality 4.5 Loch Quoich shore section [NH 042 019]

Locality 4.5 Loch Quoich shore section [1] [NH 046 016] to [NH 044 017]

Locality 4.5 Loch Quoich shore section [2] [NH 044 017] to [NH 043 018]

Locality 4.5 Loch Quoich shore section [3] [NH 043 018] to [NH 042 019]

Quoich Bridge, westwards

Locality 4.6 Quoich Bridge [NH 015 041]

Locality 4.7 Coire Shubh road section [NG 9668 0407]

Locality 4.8 Coire Shubh Beag [NG 960 045]

Locality 4.9 Kinloch Hourn to Skiary [NG 953 064] to [NG 933 072]

Excursion 5 Glen Moriston and Glen Shiel

Glen Moriston

Locality 5.1 - A887 road cutting. [NH 2864 1219]

Locality 5.2 A887 road cutting [NH 2348 1115]

Locality 5.3 Large quarry to the north of the Cluanie dam [NH 185 103]

Locality 5.4 Loch Cluanie shoreline [NH 1230 1034]

Glen Sheil

Locality 5.5 Glen Shiel [NH 0266 1234]

Locality 5.6 Glen Shiel [NH 006 135], [NH 008 137]

Excursion 6 West Glenelg and Loch Hourn

West Glenelg

Locality 6.1 North Glenelg Bay [NG 809 205]

Locality 6.2 Glenelg village [NG 8092 1921]

Locality 6.3 Sandaig [NG 7680 1463] to NG 7706 1520]

Loch Hourn region

Locality 6.4 Road section west of Arnisdale [NG 8320 1118]

Locality 6.5 Crudh 'Ard [NG 8464 0963]

Locality 6.6 Corran to Rudha Camas na Caillin [NG 85 08]

Locality 6.7 Loch Hourn [NG 8193 1181]

Excursion 7 East Glenelg and Loch Duich

East Glenelg

Locality 7.1 North of Glen More [NG 8397 2039] to [NG 860 234]

Locality 7.2 Between Glen More and Glean Beag

Loch Duich

Locality 7.3 Eilean Donan Castle [NG 885 254] to [NG 8430 2445]

Locality 7.4 Carr Brae to Loch a' Mhuilinn [NG 8995 2445] to [NG 9065 2480]

Locality 7.5 Loch Duich roadside [NG 905 233] to [NG 900 239]

Locality 7.6 Loch Duich roadside [NG 9115 2260]

Locality 7.7 Loch Duich lochside [NG 8845 2380]

Excursion 8 Glen Strathfarrar and Loch Monar

Locality 8.1 Roadside just NE of North dam. [NH 2038 3938]

Locality 8.2 Hillside just NE of North dam. [NH 2002 3895]

Locality 8.3 Glacial pavement immediately west of South dam. [NG 1990 3884]

Locality 8.4 Roadside outcrops west of the road. [NH 1996 3848]

Locality 8.5 South of the Upper Power Station. [NH 1840 3772]

Locality 8.6 Lakeside outcrops west of Monar Lodge. [NH 1988 4050]

Locality 8.7 River section of the Garbh Uisge. [NH 2180 3927]

Locality 8.8 Moine Lewisian contact north of Inchvult [NH 2294 3874]

Excursion 9 Loch a' Bhraoin, Braemore and Loch Broom

The Sgurr Beag Thrust section

Locality 9.1 Allt Leacach [NH 177 768]

Locality 9.2 Allt Breabaig [NH 156 752] to [NH 166 723]

Option A. Meall an t Sithe

Locality 9.3 Meall an t Sithe [NH 141 765]

Locality 9.4 Meall Dubh [NH 103 748]

Locality 9.5 Allt Teanga nan Caiseachan [NH 090 746] to [NH 093 736]

Locality 9.6 Loch an Nid [NH 085 733]

Option B. Corrieshalloch Gorge and Loch Broom

Locality 9.7 The Corrieshalloch Gorge [NH 204 782]

Locality 9.8 Loch Broom [NH 171 858]

Locality 9.9 Loch Broom shoreline [NH 156 892] to [NH 149 911]

Locality 9.10 The Moine mylonites [NH 149 922]

Excursion 10 South and Central Sutherland

South Sutherland

Locality 10.1 Oykell Bridge [NC 3859 0086]

Locality 10.2 Glen Oykell [NC 3399 0512] to NC 3457 0613]

Locality 10.3 Airde of Shin [NC 5219 1542] to [NC 5297 1291]

Locality 10.4 Creich Peninsula [NH 6400 8839] to [NH 6504 8802]

Central Sutherland

Locality 10.5 Vagastie Bridge [NC 5324 2712]

Locality 10.6 Loch Naver [NC 6288 4048] to [NC 6537 3925]

Excursion 11 The Moine Thrust Belt at Loch Eriboll

Transect 1: South Eriboll

Transect 2: Arnaboll

Transect 3: Kempie

Transect 4: Creagan Road

Excursion 12 Durness and Faraid Head

Durness

Locality 12.1 Sango Sands, Durness [NC 4100 6740] to [NC 404 685]

Faraid Head

Locality 12.2 Faraid Head [NC 3925 6965] to [NC 3785 7135]

Excursion 13 North Sutherland

The Melness area

Locality 13.1 The Melness area [NC 580 643] to [NC 5850 6501]

South and east side of Tongue Bay

Locality 13.2 Kinloch Broch [NC 5500 5282] to [NC 553 531]

Locality 13.3 Ribigill [NC 5618 5258] to [NC 5860 5455]

Locality 13.4 Coldbackie Bay [NC 6124 6053]

Locality 13.5 Sleteil & Skullomie Harbour [NC 6281 6283] to [NC 6180 6150]

Loch Cormaic and Borgie peat cuts

Locality 13.6 Loch Cormaic [NC 6234 5858] to [NC 6291 5766]

Locality 13.7 Borgie peat cuts [NC 6380 5770]

Torrisdale Bay

Locality 13.8 Torrisdale Bay [NC 6875 6089] to [NC 6896 6169]

Craig Ruadh to Glaisgeo

Locality 13.9 Creag Ruadh [NC 6970 6316]

Locality 13.10 Farr Bay [NC 7147 6265]

Locality 13.11 Glaisgeo [NC 7146 6360]

Swordly Bay, Kirtomy Bay and Cnoc Mor

Locality 13.12 Swordly Bay [NC 7354 6355]

Locality 13.13 Kirtomy Bay [NC 7413 6408]

Locality 13.14 Cnoc Mor [NC 7567 6344]

Port Mor to Portskerra

Locality 13.15 Port Mor [NC 7735 6547]

Locality 13.16 Strathy road sections [NC 7992 6395] to [NC 8127 6487]

Locality 13.17 Strathy Point [NC 8282 6964] to [NC 8340 6680]

Locality 13.18 Portskerra [NC 8740 6644]

Excursion 14 Great Glen

Locality 14.1 Torcastle, River Lochy: northern outcrop [NN 135 791]

Locality 14.2 Torcastle, River Lochy: southern outcrop [NN 132 786]

Locality 14.3 View over Loch Lochy towards the Clunes Tonalite [NN 235 892]

Locality 14.4 Loch Lochy shoreline [NN 255 918]

Locality 14.5 Loch Oich shoreline [NN 304 985]

Locality 14.6 Kilfinnan Burn [NN 277 957]

Locality 14.7 Rosemarkie [NH 773 627] to [NH 765 615]

Foreword

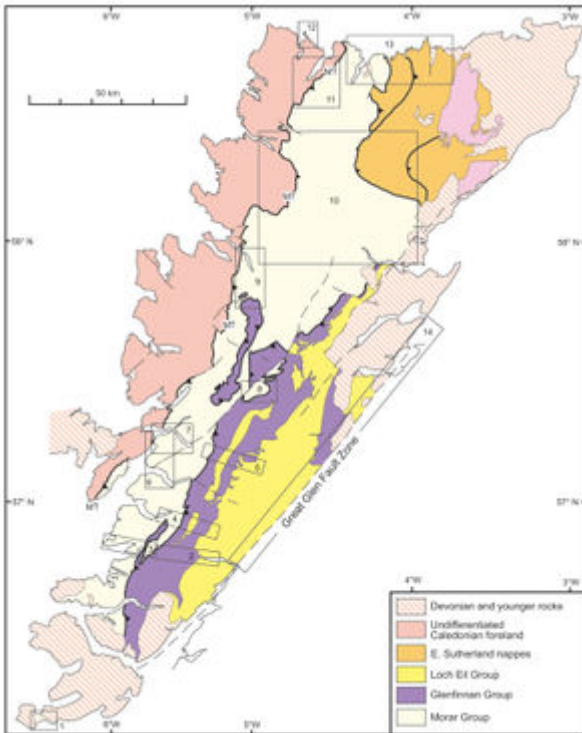


Fig. F.1 Locations of the excursions on a generalized geological map of the Northern Highlands of Scotland.

The Neoproterozoic rocks of the Moine Supergroup underlie an extensive tract of the Lower Palaeozoic Caledonian mountain belt in NW Scotland. The region contains numerous classic geological localities that have been illustrated in geology textbooks for many years. The superb geology of the region continues to attract field parties of amateur groups, undergraduate students and international scientists. This guide is a new edition of the first 'Moine fieldguide' that was published by Scottish Academic Press in 1988 on behalf of the Edinburgh and Glasgow geological societies, and is now more or less unavailable. As was the case with the first guide, the aim is to provide an up-to-date summary of the geological evolution of the Moine Supergroup, illustrated by the field evidence on which it is based. Owners of the first fieldguide will see that a number of excursions have survived more or less intact, although at a minimum all have been updated to take account of new geological information, as well as any new outcrops and/or additional constraints on access. Other excursions have been more or less completely rewritten. A key feature of this second edition is the inclusion of new excursions to the Ross of Mull, West Glenelg and Loch Hourn, East Glenelg and Loch Duich, Glen Strathfarrar and Loch Monar, South and Central Sutherland, Durness, and the Great Glen ([Fig. F.1](#)).

The editors acknowledge the substantial contributions made by Iain Allison and the late Frank May who co-edited the first 'Moine fieldguide'. The authors of the various excursions acknowledge discussions with colleagues too numerous to mention, and also the role of the Natural Environment Research Council who funded studentships which allowed much of the research reported here to be carried out.

Editorial introduction

The aim of this excursion guide is to allow geological field parties to see the wide variety of rocks

and structures that occur within the outcrop of the Moine Supergroup, as well as the Moine Thrust Zone that separates these rocks from those of the Caledonian foreland to the NW. The guide has been written for those who have some previous knowledge of geology: informed amateurs, undergraduate students and professional geologists. Books that provide useful background reading include *The Mapping of Geological Structures* by Ken McClay, and *The Field Description of Metamorphic Rocks* by Norman Fry, which are both published by John Wiley & Sons as part of their 'Geological Field Guide Series'. Two other publications that provide much useful background information are the 2002 edition of the *Geology of Scotland*, published by the Geological Society of London and edited by N. Trewin, and the British Geological Survey *Northern Highlands Regional Guide* published in 1995.

The excursions are mostly easily accessible from the various roads that cross the Moine outcrop. Statutory rights of public access were established over most land through the Land Reform (Scotland) Act 2003. Nonetheless, stalking of red deer occurs from early August and shooting of grouse from 12 August, and field parties should take account of reasonable requests to minimise disturbance at these times. A guide to access rights is published by the Ramblers' Association Scotland. Field parties are also reminded that many of the excursions include localities that have Site of Special Scientific Interest (SSSI) status and hammering and collection of material at these sites is prohibited without permission. Details of SSSIs can be obtained from Scottish Natural Heritage.

It is assumed that all geological field parties will adhere to the codes of practice for safety published by the Geological Society of London and/or the Geologists' Association. Visitors to the Scottish Highlands should be aware that the weather can be highly unpredictable, even in summer. Stout footwear, warm clothing and waterproofs are all necessary, even if the weather looks set fair. Generations of Highland geologists will testify to the need to carry insect repellent during the summer months!

Since the publication of the first 'Moine field guide' in 1988, a number of new geological maps of the Moine Supergroup have been produced by the British Geological Survey (BGS). Additionally, the application of modern geochronological techniques has placed important constraints on the timing of major metamorphic and structural events. Despite these significant advances, there still remains a lack of consensus concerning the correlations of certain tectonostratigraphic units and structures, and the nature of the Neoproterozoic evolution. In this guide, no attempt has been made to force a single view; individual authors present the evidence on which they base their views and the reader is invited to follow the excursion guide, to study the rocks and their relationships in the field and to form his or her own conclusions.

Geologists have shown that the Moine Supergroup has been affected by several phases of deformation. These phases, giving rise to recognisable sets of structures, may all be part of one mountain-building event spanning some tens of millions of years, or they may be related to different orogenic events perhaps hundreds of millions of years apart. Some structures, formed during a single phase of deformation, can be correlated over large areas, while others are quite local phenomena. One cannot assume, therefore, that structures with certain labels in one excursion are the same as those with the same label in another excursion. The shorthand terms are D for phase of deformation, S for planar fabric (surface), L for a linear fabric and F for folds. Subscripts (e.g. D₂) are added to denote which phase is being referred to. Thus S₂ is a planar fabric formed during the second (local) phase of deformation (i.e. D₂). The term S₀ may be used to indicate original sedimentary bedding.

References

- AFTALION, M. and VAN BREEMEN, O. (1980): U-Pb zircon, monazite and Rb-Sr whole-rock systematics of granitic gneiss and psammitic to semipelitic host gneiss from Glenfinnan, northwestern Scotland, *Contributions to Mineralogy and Petrology*, 72, pp. 87-98.
- ALSOP, G. I. (1992): Late Caledonian sinistral strike-slip displacement across the Leannan Fault system, northwest Ireland, *Geological Journal*, 27, pp. 119-25.
- ALSOP, G. I. and HOLDSWORTH, R. E. (1999): Vergence and facing patterns in large-scale sheath folds, *Journal of Structural Geology*, 21, pp. 1335-49.
- ALSOP, G. I. and HOLDSWORTH, R. E. (2002): The geometry and kinematics of flow perturbation folds, *Tectonophysics*, 350, pp. 99-125.
- ALSOP, G. I. and HOLDSWORTH, R. E. (2004a): The geometry and topology of natural sheath folds: a new tool for structural analysis, *Journal of Structural Geology*, 26, pp. 1561-89.
- ALSOP, G. I. and HOLDSWORTH, R. E. (2004b): Shear zone folds: records of flow perturbation or structural inheritance?, in ALSOP, G. I., HOLDSWORTH, R. E., MCCAFFREY, K. J. W. and HAND, M. (eds): *Flow Processes in Faults and Shear Zones*, Geological Society, London, Special Publications, 224, pp. 177-99.
- ALSOP, G. I. and HOLDSWORTH, R. E. (2007): Flow perturbation folding in shear zones, in REES, A. C., BUTLER, R. W. H. and GRAHAM, R. H. (eds): *Deformation of the Continental Crust: The Legacy of Mike Coward*, Geological Society, London, Special Publications, 272, pp. 75-101.
- ANDERSON, D. E. and OLYMPIO, J. C. (1977): Progressive homogenization of metamorphic garnets, S. Morar, *Canadian Mineralogist*, 15, pp. 205-16.
- ANDERTON, R. (1976): Tidal-shelf sedimentation: an example from the Scottish Dalradian, *Sedimentology*, 23, pp. 429-58.
- ANDERTON, R. (1985): Sedimentation and tectonics in the Scottish Dalradian, *Scottish Journal of Geology*, 21, pp. 407-36.
- ATHERTON, M. P. and GHANI, A. A. (2002): Slab breakoff: a model for Caledonian, late granite syn-collisional magmatism in the orthotectonic (metamorphic) zone of Scotland and Donegal, Ireland, *Lithos*, 62, pp. 65-85.
- BARBER, A. J. and SOPER, N. J. (1973): Summer field meeting in the North-West of Scotland, *Proceedings of the Geologists' Association*, 84, pp. 207-35.
- BAIRD, A. W. (1982): The Sgurr Beag Slide within Moine rocks at Loch Eilt, Invernessshire, *Journal of the Geological Society, London*, 139, pp. 647-54.
- BAIRD, A. W. (1985): Discussion of the structural setting of the Glen Dessary syenite, Invernessshire, *Journal of the Geological Society, London*, 142, p. 713.
- BARR, D. (1983): *Genesis and structural relations of Moine migmatites*, University of Liverpool PhD thesis.
- BARR, D. (1985): Migmatites in the Moine, in ASHWORTH, J. R. (ed): *Migmatites* (Glasgow &

London: Blackie), pp. 226-64.

BARR, D., HOLDSWORTH, R. E. and ROBERTS, A. M. (1986): Caledonian ductile thrusting in a Precambrian metamorphic complex: the Moine of north-western Scotland, *Geological Society of America Bulletin*, 97, pp. 754-64.

BARR, D., ROBERTS, A. M., HIGHTON, A. J., PARSON, L. M. and HARRIS, A. L. (1985): Structural setting and geochronological significance of the West Highland Granitic Gneiss, a deformed early granite within the Proterozoic, Moine rocks of NW Scotland, *Journal of the Geological Society, London*, 142, pp. 663-75.

BAXTER, A. N. and MITCHELL, J. G. (1984): Camptonite-monchiquite dyke swarms of northern Scotland: age relationships and their implications, *Scottish Journal of Geology*, 20, pp. 297-308.

BEACOM, L. E. (1999): *The kinematic evolution of reactivated and non-activated faults in basement rocks*, PhD thesis, Queen's University of Belfast.

BINGEN, B., DEMAIFFE, D. and VAN BREEMEN, O. (1998): The 616 Ma Old Egursund Basaltic Dike Swarm, SW-Norway, and Late Neoproterozoic Opening of the Iapetus Ocean, *Journal of Geology*, 106, pp. 565-74.

BLACKBOURN, G. (1981): Probable Old Red Sandstone conglomerates around Tongue and adjacent areas, north Sutherland, *Scottish Journal of Geology*, 17, pp. 103-18.

BONSOR, H. C. and PRAVE, A. R. (2008): The Upper Morar Psammite of the Moine Supergroup, Ardnamurchan Peninsular, Scotland: depositional setting, tectonic implications, *Scottish Journal of Geology*, 44, pp. 111-22.

BOWES, D. R. (1968): The absolute time scale and the subdivision of Precambrian rocks in Scotland, *Geologiska Föreningens i Stockholm Förhandlingar*, 90, pp. 175-88.

BOYER, S. and ELLIOTT, D. (1982): Thrust systems, *Bulletin of the American Association of Petroleum Geologists*, 66, pp. 1196-230.

BREWER, J. A. and SMYTHE, D. K. (1984): MOIST and the continuity of crustal reflector geometry along the Appalachian-Caledonian orogen, *Journal of the Geological Society, London*, 141, pp. 105-20.

BREWER, M. S., BROOK, M. and POWELL, D. (1979): Dating of the tectono-metamorphic history of the southwestern Moine, in HARRIS, A. L., HOLLAND, C. H. and LEAKE, B. E. (eds): *The Caledonides of the British Isles - Reviewed*, Geological Society, London, Special Publications, 8, pp. 129-37.

BREWER, T. S., STOREY, C. D., PARRISH, R. R., TEMPERLEY, S. and WINDLEY, B. F. (2003): Grenvillian age decompression of eclogites in the Glenelg-Attadale Inlier, NW Scotland, *Journal of the Geological Society, London*, 160, pp. 565-74.

BRIDEN, J. C., TURNELL, H. B. and WATTS, D. R. (1984): British paleomagnetism, Iapetus Ocean and the Great Glen Fault, *Geology*, 12, pp. 136-39.

BRITISH GEOLOGICAL SURVEY (1997): *Tongue, Scotland Sheet 114E, Solid Geology, 1:50,000*, British Geological Survey, Keyworth, Nottingham.

- BRITISH GEOLOGICAL SURVEY (2002): *Loch Eriboll, Scotland Sheet 114W, Solid Geology, 1:50,000*, British Geological Survey, Keyworth, Nottingham.
- BROWN, R. L., DALZIEL, I. W. D. and JOHNSON, M. R. W. (1970): A review of the structure and stratigraphy of the Moine of Ardgour, Moidart and Sunart-Argyll and Inverness-shire, *Scottish Journal of Geology*, 6, pp. 309-35.
- BURNS, I. M. (1994): *Tectonothermal evolution and petrogenesis of the Naver and Kirtomy nappes, north Sutherland*, PhD thesis, Oxford Brookes University.
- BURNS, I. M., FOWLER, M. B., STRACHAN R. A. and GREENWOOD, P. B. (2004): Geochemistry, petrogenesis and structural setting of the meta-igneous Strathy Complex: a unique basement block within the Scottish Caledonides?, *Geological Magazine*, 141, pp. 209-23.
- BUTLER, R. W. H. (1982): A structural analysis of the Moine Thrust zone between Loch Eriboll and Foinaven, NW Scotland, *Journal of Structural Geology*, 4, pp. 19-29.
- BUTLER, R. W. H. (1987): Thrust sequences, *Journal of the Geological Society, London*, 144, pp. 619-34.
- BUTLER, R. W. H. (2004a): Mountain Building with Henry Cadell, *Geoscientist*, 14(6), pp. 4-7.
- BUTLER, R. W. H. (2004b): The nature of 'roof thrusts' in the Moine Thrust Belt, NW Scotland: implications for the structural evolution of thrust belts, *Journal of the Geological Society, London*, 161, pp. 849-59.
- BUTLER, R. W. H. (2009): Eriboll in MENDUM, J. R., BARBER, A. J., BUTLER, R. W. H., FLINN, D., GOODENOUGH, K. M., KRABBENDAM, M., PARK, R.G. and STEWART, A.D. (eds): *Lewisian Torridonian and Moine Rocks of Scotland*, Geological Conservation Review Series, Joint Nature Committee, Peterborough, 34, pp. 242-49.
- BUTLER, R. W. H. and COWARD, M. P. (1984): Geological constraints, structural evolution and the deep geology of the NW Scottish Caledonides, *Tectonics*, 3, pp. 347-65.
- BUTLER, R. W. H., HOLDSWORTH, R. E. MATTHEWS, S. J. (2006): Styles of basement involvement in the Moine thrust Belt, NW Scotland, in MAZZOLI, S. and BUTLER, R. W. H. (eds): *Styles of continental contraction*, Geological Society of America Special Paper, 414, pp. 133-50.
- CADELL, H. M. (1888): Experimental researches in mountain building, *Transactions of the Royal Society of Edinburgh*, 35, pp. 337-57.
- CANNING, J. C., HENNEY, P. J., MORRISON, M. A. and GASKARTH, J. W. (1996): Geochemistry of late Caledonian minettes from Northern Britain: Implications for the Caledonian sub-continental lithospheric mantle, *Mineralogical Magazine*, 128, pp. 385-88.
- CANNING, J. C., HENNEY, P. J., MORRISON, M. A., VAN CALSTEREN, P. W., GASKARTH, J. W. and SWARBRICK, A. (1998): The Great Glen Fault: A major lithospheric boundary, *Journal of the Geological Society, London*, 155, pp. 424-27.
- CAWOOD, P. A., NEMCHIN, A. A., STRACHAN, R. A., KINNY, P. D. and LOEWY, S. (2004): Laurentian provenance and tectonic setting for the upper Moine Supergroup, Scotland, constrained by detrital zircons from the Loch Eil and Glen Urquhart successions, *Journal of the Geological Society, London*, 161, pp. 863-74.

- CAWOOD, P. A., NEMCHIN, A. A., STRACHAN, R. A., PRAVE, A. R. and KRABBENDAM, M. (2007): Sedimentary basin and detrital zircon record along east Laurentia and Baltica during assembly and breakup of Rodinia, *Journal of the Geological Society, London*, 164, pp. 257-75.
- CAWOOD, P. A., STRACHAN, R. A., CUTTS, K., KINNY, P. D., HAND, M. and PISAREVSKY, S. (2010): Neoproterozoic orogeny along the margin of Rodinia: development of the Valhalla Orogen, North Atlantic, *Geology*, 38, pp. 99-102.
- CHENG, Y. C. (1942): A hornblendic complex, including appinitic types, in the migmatite area of northern Sutherland, *Proceedings of the Geologists' Association*, 53, pp. 67-85.
- CHENG, Y. C. (1943): The migmatite area around Bettyhill, Sutherland, *Quarterly Journal of the Geological Society of London*, 99, pp. 107-54.
- CLIFFORD, T. N. (1957): The stratigraphy and structure of part of the Kintail district of southern Ross-shire - its relationship to the Northern Highlands, *Quarterly Journal of the Geological Society of London*, 113, pp. 57-92.
- COCKS, L. R. M. and TORSVIK, T. H. (2002): Earth geography from 500 to 400 million years ago: a faunal and palaeomagnetic review, *Journal of the Geological Society, London*, 159, pp. 631-44.
- COWARD, M. P. (1980): The Caledonian thrust and shear zones of N.W. Scotland, *Journal of Structural Geology*, 2, pp. 11-17.
- COWARD, M. P. (1984): A geometrical study of the Arnaboll and Heilam thrust sheets, NW of Ben Arnaboll, Sutherland, *Scottish Journal of Geology*, 20, pp. 87-106.
- COWARD, M. P. (1988): The Moine Thrust and the Scottish Caledonides, in *Geometries and Mechanics of Thrusting, with special reference to the Appalachians*, in MITRA, G. and WOJTAL, S. (eds): Geological Society of America Special Paper, 222, pp. 1-16.
- COWARD, M. P. (1990): The Precambrian, Caledonian and Variscan framework to NW Europe, in HARDMAN, R. F. P. and BROOKS, J. (eds): *Tectonic Events Responsible for Britain's Oil and Gas Reserves*, Geological Society, London, Special Publications, 55, pp. 1-34.
- COWARD, M. P. and ENFIELD, M. A. (1987): The structure of the West Orkney Basin and adjacent basins, in BROOKS, J. and GLENNIE, K. (eds): *Petroleum Geology of North West Europe: proceedings from the 3rd Petroleum Geology Conference*, (UK: Graham & Titman), pp. 687-96.
- CUTTS, K. A., HAND, M., KELSEY, D. E. STRACHAN, R. A. (2009): Orogenic versus extensional settings for regional metamorphism: Knoydartian events in the Moine Supergroup revisited, *Journal of the Geological Society, London*, 166, pp. 201-204.
- CUTTS, K. A., KINNY, P. D., STRACHAN, R. A., HAND, M., KELSEY, D. E., EMERY, M., FRIEND, C. R. L. and LESLIE, A. G. (2010): Three metamorphic events recorded in a single garnet: coupled phase modelling with in situ LA-ICPMS, and SIMS geochronology from the Moine Supergroup, NW Scotland, *Journal of Metamorphic Geology*, 28, pp. 249-67.
- DALLMEYER, R. D., STRACHAN, R. A., ROGERS, G., WATT, G. R. and FRIEND, C. R. L. (2001): Dating deformation and cooling in the Caledonian thrust nappes of north Sutherland, Scotland: insights from $^{40}\text{Ar}/^{39}\text{Ar}$ and Rb-Sr chronology, *Journal of the Geological Society, London*, 158, pp. 501-12.

- DALZIEL, I. W. D. (1966): A structural study of the granitic gneiss of Western Ardgour, Argyll and Inverness-shire, *Scottish Journal of Geology*, 2, pp. 125-52.
- DALZIEL, I. W. D. and SOPER, N. J. (2001): Neoproterozoic extension on the Scottish promontory of Laurentia: paleogeographic and tectonic implications, *Journal of Geology*, 109, pp. 299-317.
- DEWEY, J. F. and SHACKLETON, R. J. (1984): A model for the evolution of the Grampian tract in the early Caledonides and Appalachians, *Nature*, 312, pp. 115-20.
- DEWEY, J. F. and RYAN, P. D. (1990): The Ordovician evolution of the South Mayo Trough, western Ireland, *Tectonics*, 9, pp. 887-903.
- DEWEY, J. F. and MANGE, M. (1999): Petrography of Ordovician and Silurian sediments in the western Irish Caledonides: tracers of a short-lived Ordovician continent-arc collision orogeny and the evolution of the Laurentian Appalachian-Caledonian margin, in MACNIOCAILL, C. and RYAN, P. D. (eds): *Continental Tectonics*, Geological Society, London, Special Publications, 164, pp. 55-107.
- DEWEY, J. F. and STRACHAN, R. A. (2003): Changing Silurian-Devonian relative plate motion in the Caledonides: sinistral transpression to sinistral transtension, *Journal of the Geological Society, London*, 160, pp. 219-29.
- ELLIOTT, D. and JOHNSON, M. R. W. (1980): Structural evolution in the northern part of the Moine thrust belt, NW Scotland, *Transactions of the Royal Society of Edinburgh: Earth Sciences*, 71, pp. 69-96.
- ENFIELD, M. A. and COWARD, M. P. (1987): The structure of the West Orkney Basin, northern Scotland, *Journal of the Geological Society, London*, 144, pp. 871-84.
- EVANS, D. J. and WHITE, S. H. (1984): Microstructural and fabric studies from the Moine rocks of the Moine Nappe, Eriboll, NW Scotland, *Journal of Structural Geology*, 6, pp. 369-89.
- FETTES, D. J. (1979): A metamorphic map of the British and Irish Caledonides, in HARRIS, A. L., HOLLAND, C. H. and LEAKE, B. E. (eds): *The Caledonides of the British Isles - Reviewed*, Geological Society, London, Special Publications, 8, pp. 307-21.
- FETTES, D. J. and MACDONALD, R. (1978): The Glen Garry vein complex, *Scottish Journal of Geology*, 14, pp. 335-58.
- FETTES, D. J., LONG, C. B., MAX, M. D. YARDLEY, B. W. D. (1985): Grade and time of metamorphism in the Caledonide Orogen of Britain and Ireland, in HARRIS, A. L. (ed.): *The Nature and Timing of Orogenic Activity in the Caledonian Rocks of the British Isles*, Geological Society, London, Memoirs, 9, pp. 41-53.
- FISCHER, M. W. and COWARD, M. P. (1982): Strains and folds within thrust sheets: the Heilam sheet NW Scotland, *Tectonophysics*, 88, pp. 291-312.
- FLETT, J. S. (1905): *On the petrographic characters of the inliers of Lewisian rocks among the Moine gneisses of the north of Scotland*, Memoirs of the Geological Survey, Summary of Progress for 1905, pp. 155-67.
- FLINN, D. (1961): Continuation of the Great Glen Fault beyond the Moray Firth, *Nature*, 191, pp. 589-91.

- FREEMAN, S. R., BUTLER, R. W. H., CLIFF, R. A. and REX, D. C. (1998): Dating mylonite evolution: an Rb-Sr and K-Ar study of the Moine mylonites, NW Scotland, *Journal of the Geological Society, London*, 155, pp. 745-58.
- FRIEND, C. R. L., JONES, K. A. and BURNS, I. M. (2000): New high-pressure granulite facies event in the Moine Supergroup, northern Scotland: implications for Taconic (early Caledonian) crustal evolution, *Geology*, 28, pp. 543-46.
- FRIEND, C. R. L., KINNY, P. D., ROGERS, G., STRACHAN, R. A. and PATERSON, B. A. (1997): U-Pb zircon geochronological evidence for Neoproterozoic events in the Glenfinnan Group (Moine Supergroup): the formation of the Ardgour granite gneiss, north-west Scotland, *Contributions to Mineralogy and Petrology*, 128, pp. 101-13.
- FRIEND, C. R. L., STRACHAN, R. A. and KINNY, P. D. (2008): U-Pb zircon dating of basement inliers within the Moine Supergroup, Scottish Caledonides: implications of Archaean protolith ages, *Journal of the Geological Society, London*, 165, pp. 807-15.
- FRIEND, C. R. L., STRACHAN, R. A., KINNY, P. D. and WATT, G. R. (2003): Provenance of the Moine Supergroup of NW Scotland: evidence from geochronology of detrital and inherited zircons from sediments, granites and migmatites, *Journal of the Geological Society, London*, 160, pp. 247-
- GEIKIE, A. (1884): The crystalline schists of the Scottish Highlands, *Nature*, 31, pp. 29-31.
- GILETTI, B. J., MOORBATH, S. and LAMBERT, R. ST. J. (1961): A geochronological study of the metamorphic complexes of the Scottish Highlands, *Quarterly Journal of the Geological Society of London*, 117, pp. 233-72.
- GLENDINNING, N. R. W. (1988): Sedimentary structures and sequences within a late Proterozoic tidal shelf deposit: the Upper Morar Psammite Formation of northwestern Scotland, in WINCHESTER, J. A. (ed.): *Later Proterozoic Stratigraphy of the Northern Atlantic Regions* (Glasgow: Blackie), pp. 14-31.
- GRANT, C. J. and HARRIS, A. L. (2000): The kinematic and metamorphic history of the Sgurr Beag Thrust, Ross-shire, Scotland, *Journal of Structural Geology*, 22, pp. 191-205.
- HALL, J., BREWER, J. A., MATTHEWS, D. H. and WARNER, M. (1984): Crustal structure across the Caledonides from the WINCH seismic reflection profile: Influences on the evolution of the Midland Valley of Scotland, *Transactions of the Royal Society of Edinburgh: Earth Sciences*, 75, pp. 97-109.
- HARRISON, V. E. and MOORHOUSE, S. J. (1976): A possible early Scourian supracrustal assemblage within the Moine, *Journal of the Geological Society, London*, 132, pp. 461-66.
- HIPPLER, S. J. and KNIPE, R. J. (1990): The evolution of cataclastic rocks from a pre-existing mylonite, in KNIPE, R. J. and RUTTER, E. H. (eds): *Deformation Mechanisms, Rheology and Tectonics*, Geological Society, London, Special Publications, 54, pp. 71-79.
- HOLDSWORTH, R. E. (1987): *Basement/cover relationships, reworking and Caledonian ductile thrusts of the Northern Moine, NW Scotland*, University of Liverpool PhD thesis.
- HOLDSWORTH, R. E. (1988): The stereographic analysis of facing, *Journal of Structural Geology*, 10, pp. 219-23.
- HOLDSWORTH, R. E. (1989a): The geology and structural evolution of a Caledonian fold and ductile

thrust zone, Kyle of Tongue region, Sutherland, northern Scotland, *Journal of the Geological Society, London*, 146, pp. 809-23.

HOLDSWORTH, R. E. (1989b): Late brittle deformation in a Caledonian ductile thrust wedge: new evidence for gravitational collapse in the Moine Thrust sheet, Sutherland, Scotland, *Tectonophysics*, 170, pp. 17-28.

HOLDSWORTH, R. E. (1990): Progressive deformation structures associated with ductile thrusts in the Moine Nappe, Sutherland, N. Scotland, *Journal of Structural Geology*, 12, pp. 443-52.

HOLDSWORTH, R. E. and ROBERTS, A. M. (1984): A study of early curvilinear fold structures and strain in the Moine of the Glen Garry region, Inverness-shire, *Journal of the Geological Society, London*, 141, pp. 327-38.

HOLDSWORTH, R. E. and STRACHAN, R. A. (1988): The structural age and possible origin of the Vagastie Bridge granite and associated intrusions, central Sutherland, *Geological Magazine*, 125, pp. 613-20.

HOLDSWORTH, R. E. and GRANT, C. J. (1990): Convergence-related 'dynamic spreading' in a mid-crustal ductile thrust zone: a possible orogenic wedge model, in KNIPE, R. J. and RUTTER, E. H. (eds): *Deformation Mechanisms, Rheology and Tectonics*, Geological Society, London, Special Publications, 54, pp. 491-500.

HOLDSWORTH, R. E., HARRIS, A. L. and ROBERTS, A. M. (1987): The stratigraphy, structure and regional significance of the Moine rocks of Mull, Argyllshire, W Scotland, *Geological Journal*, 22, pp. 83-107.

HOLDSWORTH, R. E., STRACHAN, R. A. and HARRIS, A. L. (1994): Precambrian rocks in northern Scotland east of the Moine Thrust: the Moine Supergroup, in GIBBONS, W. and HARRIS, A. L. (eds): *A revised correlation of Precambrian rocks in the British Isles*, Geological Society, London, Special Report, 22, pp. 23-32.

HOLDSWORTH, R. E., MCERLEAN, M. A. STRACHAN, R. A. (1999): The influence of country rock structural architecture during pluton emplacement: the Loch Loyal syenites, Scotland, *Journal of the Geological Society, London*, 156, pp. 163-75.

HOLDSWORTH, R. E., STRACHAN, R. A. and ALSOP, G. I. (2001a): *Geology of the Tongue District*, Memoir of the British Geological Survey (UK: HMSO).

HOLDSWORTH, R. E., STEWART, M., IMBER, J. STRACHAN, R. A. (2001b): The structure and rheological evolution of reactivated continental fault zones: a review and case study, in MILLER, J. A., HOLDSWORTH, R. E.,

BUICK, I. and HAND, M. (eds): *Continental Reworking and Reactivation*, Geological Society, Special Publication, 184, pp. 115-37.

HOLDSWORTH, R. E., STRACHAN, R. A., ALSOP, G. I., GRANT, C. J. and WILSON, R. W. (2006): Thrust sequences and the significance of low-angle, out-of-sequence faults in the northernmost Moine Nappe and Moine Thrust Zone, NW Scotland, *Journal of the Geological Society, London*, 163, pp. 801-14.

HOLDSWORTH, R. E., ALSOP, G. I. and STRACHAN, R. A. (2007): Tectonic stratigraphy and structural continuity of the northernmost Moine Thrust Zone and Moine Nappe, Scottish

Caledonides, in RIES, A. C., BUTLER,

R. W. H. and GRAHAM, R.H. (eds): *Deformation of the Continental Crust: The Legacy of Mike Coward*, Geological Society, London, Special Publication, 272, pp. 121-42.

HOWARTH, R. J. and LEAKE, B. E. (2002): *The Life of Frank Cole Phillips* (London: Geological Society).

HUTTON, D. H. W. and MCERLEAN, M. (1991): Silurian and Early Devonian sinistral deformation of the Ratagain granite, Scotland: constraints on the age of Caledonian movements on the Great Glen fault system, *Journal of the Geological Society, London*, 148, pp. 1-4.

HYSLOP, E. K. (1992): *Strain-induced metamorphism and pegmatite development in the Moine rocks of Scotland*, PhD thesis, University of Hull.

JACQUES, J. M. and REAVY, R. J. (1994): Caledonian plutonism and major lineaments in the SW Scottish Highlands, *Journal of the Geological Society, London*, 151, pp. 955-69.

JOHNSON, H. D. (1978): Shallow siliciclastic seas, in READING, H. (ed): *Sedimentary Environments and Facies* (Oxford: Blackwell Scientific Publications), pp. 209-58.

JOHNSON, M. R. W. and DALZIEL, I. W. D. (1963): Metamorphosed lamprophyres and the late thermal history of the Moine, *Geological Magazine*, 103, pp. 240-49.

JOHNSON, M. R. W., KELLEY, S. P., OLIVER, G. J. H. and WINTER, D. A. (1985): Thermal effects and timing of thrusting in the Moine Thrust zone, *Journal of the Geological Society, London*, 142, pp. 863-74.

JOHNSTONE, G. S. (1975): The Moine Succession, in HARRIS, A. L., SHACKLETON, R. M., WATSON, R. M., WATSON, J. V., DOWNIE, C., HARLAND, W. B. and MOORBATH, S. (eds): *A Correlation of Precambrian rocks in the British Isles*, Geological Society, London, Special Report, 6, pp. 30-42.

JOHNSTONE, G. S., SMITH, D. I. and HARRIS, A. L. (1969): The Moinian Assemblage of Scotland, in KAY, M. (ed.): *North Atlantic geology and continental drift*, American Association of Petroleum Geologists, Memoirs, 12, pp. 159-80.

KELLEY, S. P. (1988): The relationship between K-Ar mineral ages, mica grainsizes and movement on the Moine Thrust Zone, NW Highlands, Scotland, *Journal of the Geological Society, London*, 145, pp. 1-10.

KELLEY, S. P. and POWELL, D. (1985): Relationships between marginal thrusting and movement on major, internal shear zones in the N. Highland Caledonides, Scotland, *Journal of Structural Geology*, 7, pp. 43-56.

KENNEDY, W. Q. (1946): The Great Glen Fault, *Quarterly Journal of the Geological Society of London*, 102, pp. 41-76.

KENNEDY, W. Q. (1949): Zones of progressive metamorphism in the Moine Schists of the Western Highlands of Scotland, *Mineralogical Magazine*, 86, pp. 43-56.

KENNEDY, W. Q. (1955): The tectonics of the Morar anticline and the problems of the north-west Caledonian front, *Quarterly Journal of the Geological Society of London*, 110, pp. 375-90.

KINNY, P. D. and FRIEND, C. R. L. (1997): U-Pb isotopic evidence for the accretion of different crustal blocks to form the Lewisian Complex of northwestern Scotland, *Contributions to Mineralogy & Petrology*, 129, pp. 26-340.

KINNY, P. D., FRIEND, C. R. L. and LOVE, G. J. (2005): Proposal for a terrane-based nomenclature for the Lewisian Gneiss Complex of NW Scotland, *Journal of the Geological Society, London*, 162, pp. 175-86.

KINNY, P. D., FRIEND, C. R. L., STRACHAN, R. A., WATT, G. R. and BURNS, I. M. (1999): U-Pb geochronology of regional migmatites, East Sutherland, Scotland: evidence for crustal melting during the Caledonian orogeny, *Journal of the Geological Society, London*, 156, pp. 1143-52.

KINNY, P. D., STRACHAN, R. A., ROGERS, G. R., FRIEND, C. R. L. and KOCKS, H. (2003a): U-Pb geochronology of deformed metagranites in central Sutherland, Scotland: evidence for widespread Silurian metamorphism and ductile deformation of the Moine Supergroup during the Caledonian orogeny, *Journal of the Geological Society, London*, 160, pp. 259-69.

KINNY, P. D., STRACHAN, R. A., KOCKS, H. FRIEND, C. R. L. (2003b): U-Pb geochronology of late Neoproterozoic augen granites in the Moine Supergroup, NW Scotland: dating of rift-related, felsic magmatism during supercontinent break-up?, *Journal of the Geological Society of London*, 160, pp. 925-34.

KIRKLAND, C. L., STRACHAN, R. A. and PRAVE, A. R. (2008): Detrital zircon signature of the Moine Supergroup, Scotland: contrasts and comparisons with other Neoproterozoic successions within the circum-North Atlantic region, *Precambrian Research*, 163, pp. 332-50.

KOCKS, H., STRACHAN, R. A. and EVANS, J. A. (2006): Heterogeneous reworking of Grampian metamorphic complexes during Scandian thrusting in the Scottish Caledonides: insights from the structural setting and U-Pb geochronology of the Strath Halladale Granite, *Journal of the Geological Society, London*, 163, pp. 525-38.

KRABBENDAM, M, PRAVE, A. R. and CHEER, D. (2008): A fluvial origin for the Neoproterozoic Morar Group, NW Scotland: implications for Torridon-Morar group correlations and the Grenville Orogen Foreland Basin, *Journal of the Geological Society, London*, 165, pp. 379-94.

LAMBERT, R. ST. J. (1959): The mineralogy and metamorphism of the Moine schists of the Morar and Knoydart districts of Invernessshire, *Transactions of the Royal Society of Edinburgh*, 63, pp. 553-86.

LAMBERT, R. ST. J. (1969): Isotopic studies relating to the Pre-Cambrian history of the Moine of Scotland, *Proceedings of the Geological Society, London*, 1652, pp. 243-45.

LAMBERT, R. ST. J. and MCKERROW, W. S. (1976): The Grampian Orogeny, *Scottish Journal of Geology*, 12, pp. 271-92.

LAPWORTH, C. (1883): On the structure and metamorphism of the rocks of the Durness-Eriboll district, *Proceedings of the Geological Association*, 8, pp. 438-42.

LAPWORTH, C. (1885): The Highland Controversy in British geology: its causes, course and consequence, *Nature*, 32, pp. 558-59.

LAW, R. D. and JOHNSON, M. R. W. (2010) Microstructures and crystal fabrics of the Moine thrust zone and Moine nappe: history of research and changing tectonic interpretations in: LAW, R. D.,

BUTLER,

R. W. H., HOLDSWORTH, R. E., KRABBENDAM, M. and STRACHAN R. A. (eds): *Continental Tectonics and Mountain Building - The Legacy of Peach and Horne*, Geological Society, London, Special Publication, 335, pp. 441-501.

LAW, R. K., CASEY, M. and KNIPE, R. J. (1986): Kinematic and tectonic significance of microstructural and crystallographic fabrics within quartz mylonites from the Assynt and Eriboll regions of the Moine thrust zone, NW Scotland, *Transactions of the Royal Society of Edinburgh, Earth Sciences*, 77, pp. 99-126.

LEEDAL, G. P. (1952): The Cluanie igneous intrusion, Inverness-shire and Ross-shire, *Quarterly Journal of the Geological Society of London*, 108, pp. 35-63.

LESLIE, A. G., KRABBENDAM, M., KIMBALL, G. S. and STRACHAN, R. A. (2010): Regional-scale lateral variation and linkage in ductile thrust architecture: the Oykeil Traverse Zone, and mullions, in the Moine Nappe, NW Scotland in Scotland in LAW,

R. D., BUTLER, R. W. H., HOLDSWORTH, R. E., KRABBENDAM, M. and STRACHAN R. A. (eds): *Continental Tectonics and Mountain Building - The Legacy of Peach and Horne*, Geological Society, London, Special Publication, 335, pp. 357-79.

LONG, L. E. and LAMBERT, R. ST. J. (1963): Rb-Sr isotopic ages from the Moine series, in

JOHNSON, M. R. W. and STEWART, F. H. (eds): *The British Caledonides* (Edinburgh: Oliver & Boyd), pp. 217-46.

MCBRIDE, J. H. (1994) Investigating the crustal structure of a strike-slip 'step-over' zone along the Great Glen Fault, *Tectonics*, 13, pp. 1150-60.

MCCLAY, K. R. and COWARD, M. P. (1981): The Moine Thrust zone: an overview, in MCCLAY, K. R. and PRICE, N. J. (eds): *Thrust and Nappe Tectonics*, Geological Society, London, Special Publications, 9, pp. 241-60.

MACKENZIE, W. S. (1949): Kyanite gneiss within a thermal aureole, *Geological Magazine*, 86, pp. 251-55.

MACQUEEN, J. A. and POWELL, D. (1977): Relationships between deformation and garnet growth in Moine (Precambrian) rocks of western Scotland, *Geological Society of America Bulletin*, 88, pp. 235-40.

MACKIE, D. W. (1975): The Brochs of Scotland, in FOWLER, P. J. (ed): *Recent Work in Rural Archaeology* (Bradford: Moonraker Press), pp. 72-92.

MAY, F., PEACOCK, J. D., SMITH, D. I. and BARBER, A. J. (1993): *Geology of the Kintail District*, Memoir of the British Geological Survey.

MENDUM, J. R. (1976): A strain study of the Strathan Conglomerate, North Sutherland, *Scottish Journal of Geology*, 12, pp. 135-46.

MENDUM, J. R., BARBER, A. J., BUTLER, R. W. H., FLINN, D., GOODENOUGH, K. M., KRABBENDAM, M., PARK, R. G. and STEWART, A. D. (eds) (2009): *Lewisian, Torridonian and Moine Rocks of Scotland*, Geological Conservation Review Series, Joint Nature Committee, Peterborough,

34, 722 pp.

MENDUM, J. R. and NOBLE, S. R. (2010): Mid-Devonian sinistral transpressional movements on the Great Glen fault: the rise of the Rosemarkie Inlier and the Acadian Event in Scotland in LAW, R. D., BUTLER, R. W. H., HOLDSWORTH, R. E., KRABBENDAM, M. STRACHAN R. A. (eds): *Continental Tectonics and Mountain Building – The Legacy of Peach and Horne*, Geological Society, London, Special Publication, 335, pp. 159-85.

MILLAR, I. L. (1999): Neoproterozoic extensional basic magmatism associated with emplacement of the West Highland granite gneiss in the Moine Supergroup of NW Scotland, *Journal of the Geological Society, London*, 156, pp. 1153-62.

MOORHOUSE, S. J. (1976): The geochemistry of the Lewisian and the Moinian of the Borgie area, north Sutherland, *Scottish Journal of Geology*, 12, pp. 159-67.

MOORHOUSE, S. J. and MOORHOUSE, V. E. (1979): The Moine amphibolite suites of central and northern Sutherland, *Mineralogical Magazine*, 43, 211-25.

MOORHOUSE, S. J. and MOORHOUSE, V. E. (1988): The Moine Assemblage in Sutherland, in WINCHESTER, J. A. (ed.): *Later Proterozoic Stratigraphy in the Northern Atlantic Regions* (Glasgow: Blackie), pp. 54-73.

MOORHOUSE, V. E. (1979): *The geology and geochemistry of the Bettyhill-Strathy area of north-east Sutherland*, PhD thesis, University of Hull.

MOORHOUSE, V. E. and MOORHOUSE, S. J. (1983): The geology and geochemistry of the Strathy complex of north-east Sutherland, Scotland, *Mineralogical Magazine*, 47, pp. 123-37.

MOORHOUSE, S. J., MOORHOUSE, V. E. HOLDSWORTH, R. E. (1988): Excursion 12: North Sutherland, in ALLISON, I., MAY, F. and STRACHAN, R. A. (eds): *An Excursion Guide to the Moine Geology of the Scottish Highlands* (Edinburgh: Scottish Academic Press), pp. 216-48.

MYKURA, W. (1982): The Old Red Sandstone east of Loch Ness, Inverness-shire, *Institute of Geological Sciences, Report*, 82-13, Edinburgh.

OLIVER, G. J. H. (2001): Reconstruction of the Grampian episode in Scotland: its place in the Caledonian Orogeny, *Tectonophysics*, 332, pp. 23-49.

OLIVER, G. J. H., WILDE, S. and YUSHENG, W. (2008): Geochronology of Scottish granitoids between ~600 and ~390 Ma: from break-up of Rodinia to collisions with a Iapetan arc, Avalonia, Baltica and Armorica, *Journal of the Geological Society, London*, 165, pp. 661-74.

OPEN UNIVERSITY (2003): *Mountain Building in Scotland* (Milton Keynes: Open University).

PANKHURST, R. J. (1982): Geochronological tables for British igneous rocks, in SUTHERLAND, D.S. (ed): *Igneous Rocks of the British Isles* (Chichester: John Wiley & Sons), pp. 575-81.

PARK, R. G., STEWART, A. D. and WRIGHT, D. T. (2002): The Hebridean Terrane, in TREWIN, N. (ed): *Geology of Scotland* (4th edition) (London: Geological Society), pp. 45-80.

PASSCHIER, C. W. (2001): Flanking structures, *Journal of Structural Geology*, 23, pp. 951-62.

PEACH, B. N., HORNE, J., GUNN, W., CLOUGH, C. T. and HINXMAN, L. W. (1907): *The Geological*

Structure of the Northwest Highlands of Scotland, Memoirs of the Geological Survey of Great Britain.

PEACH, B. N., HORNE, J., WOODWARD, H. B., CLOUGH, C. T., HARKER, A. and WEDD, C. D. (1910): *The Geology of Glenelg, Lochalsh and south-east part of Skye*, Memoirs of the Geological Survey of Great Britain.

PEACH, B. N., GUNN, W., CLOUGH, C. T., HINXMAN, L. W., CRAMPTON, C. B., ANDERSON, E. M. and FLETT, J. S. (1912): *The Geology of Ben Wyvis, Carn Chuinneag, Inchbae and the surrounding country*, Memoirs of the Geological Survey of Great Britain.

PEACH, B. N. *et al.* (1913): *The geology of central Ross-shire*, Memoirs of the Geological Survey of Great Britain. PEACOCK, J. D. (1975): 'Slide' rocks in the Moine of the Loch Shin area, Northern Scotland, *Bulletin of the Geological Survey, Great Britain*, 49, pp. 23-30.

PEACOCK, J. D. (1977): Metagabbros in granitic gneiss, Inverness-shire, and their significance in the structural history of the Moines, *Institute of Geological Sciences Report*, 77/ 20.

PIASECKI, M. A. J. (1984): Ductile thrusts as time markers in orogenic evolution: an example from the Scottish Caledonides, in GALSON, D. and MUELLER, S. E. (eds): *First European Geotraverse Workshop: the northeastern segment* (Strasbourg: Publication of the European Science Foundation), pp. 109-14.

PIASECKI, M. A. J. and VAN BREEMEN, O. (1983): Field and isotopic evidence for a c.750 Ma tectonothermal event in the Moine rocks of the central Highland region of the Scottish Caledonides, *Transactions of the Royal Society of Edinburgh: Earth Sciences*, 73, pp. 119-34.

PICKERING, K. T., BASSETT, M. G. and SIVETER, D. J. (1988): Late Ordovician-Early Silurian destruction of the Iapetus Ocean: Newfoundland, British Isles and Scandinavia - a discussion, *Transactions of the Royal Society of Edinburgh: Earth Sciences*, 79, pp. 361-82.

PITCHER, W. S., ELWELL, R. W. D., TOZER, C. F. and CAMBRAY, F. W. (1964): The Leannan Fault, *Quarterly Journal of the Geological Society of London*, 120, pp. 241-73.

POOLE, A. B. and SPRING, J. S. (1974): Major structures in Morar and Knoydart, NW Scotland, *Journal of the Geological Society, London*, 130, pp. 43-53.

POTTS, G. J., HUNTER, R. H., HARRIS, A. L. and FRASER, F. M. (1995): Late-orogenic extension tectonics at the NW margin of the Caledonides in Scotland, *Journal of the Geological Society, London*, 152, pp. 907-10.

POWELL, D. (1964): The stratigraphical succession of the Moine schists around Lochailort (Inverness-shire) and its regional significance, *Proceedings of the Geologists' Association*, 75, pp. 223-50.

POWELL, D. (1966): The Structure of the South-Eastern Part of the Morar Antiform, Inverness-shire, *Proceedings of the Geologists' Association*, 77, pp. 79-100.

POWELL, D. (1974): Stratigraphy and structure of the western Moine and the problem of Moine orogenesis, *Journal of the Geological Society, London*, 130, pp. 575-93.

POWELL, D. and MACQUEEN, J. A. (1976): Relationships between garnet shape, rotational inclusion fabrics and strain in some Moine metamorphic rocks of Skye, Scotland, *Tectonophysics*, 35, pp.

391-402.

POWELL, D., BROOK, M. and BAIRD, A. W. (1983): Structural dating of a Precambrian pegmatite in Moine rocks of northern Scotland and its bearing on the status of the 'Morarian Orogeny', *Journal of the Geological Society, London*, 140, pp. 813-23.

POWELL, D., BAIRD, A. W., CHARNLEY, N. R. and JORDAN, P. J. (1981): The metamorphic environment of the Sgurr Beag Slide: a major crustal displacement zone in Proterozoic, Moine rocks of Scotland, *Journal of the Geological Society, London*, 138, pp. 661-73.

RAMSAY, J. G. (1956): The supposed Moinian basal conglomerate at Glen Strathfarrar, Inverness-shire, *Geological Magazine*, 93, pp. 32-40.

RAMSAY, J. G. (1957): Superimposed folding at Loch Monar, Inverness-shire and Rossshire, *Quarterly Journal of the Geological Society of London*, 113, pp. 271-307.

RAMSAY, J. G. (1958): Moine-Lewisian relations at Glenelg, Inverness-shire, *Quarterly Journal of the Geological Society of London*, 113, pp. 487-523.

RAMSAY, J. G. (1960): The deformation of early linear structures in areas of repeated folding, *Journal of Geology*, 68, pp. 75-93.

RAMSAY, J. G. (1962): The geometry and mechanics of 'similar type folds', *Journal of Geology*, 70, pp. 309-27.

RAMSAY, J. G. (1967): *Folding and fracturing of rocks* (New York: McGraw Hill Book Co.).

RAMSAY, J. G. (1997): The geometry of a deformed unconformity in the Caledonides of NW Scotland, in SENGUPTA, S. (ed): *Evolution of Geological Structures in Micro- to Macro-scales* (London: Chapman and Hall), pp. 445-72.

RAMSAY, J. G. and SPRING, J. S. (1962): Moinian stratigraphy in the western Highlands of Scotland, *Proceedings of the Geologists' Association*, 73, pp. 295-326.

RAMSAY, J. G. and HUBER, M. I. (1987): *The Techniques of Modern Structural Geology 2: Folds and Fractures* (London: Academic Press).

RAMSAY, J. G. and LISLE, R. J. (2000): *The Techniques of Modern Structural Geology 3: Applications of Continuum Mechanics in Structural Geology* (London: Academic Press).

RATHBONE, P. A. and HARRIS, A. L. (1979): Basement-cover relationships at Lewisian inliers in the Moine rocks, in HARRIS, A. L., HOLLAND, C. H. and LEAKE, B. E. (eds): *The Caledonides of the British Isles - Reviewed*, Geological Society, London, Special Publications, 8, pp. 101-107.

RATHBONE, P. A. and HARRIS, A. L. (1980): Moine and Lewisian near the Great Glen Fault in Easter Ross, *Scottish Journal of Geology*, 16, pp. 51-64.

RATHBONE, P. A., COWARD, M. P. and HARRIS, A. L. (1983): Cover and basement: A contrast in style and fabrics, in HARRIS, L. D. and WILLIAMS, H. (eds): *Tectonics and Geophysics of Mountain Chains*, Geological Society of America Memoir, 158, pp. 213-23.

RAWSON, J. R. (2004): *Origin and metamorphic evolution of high pressure rocks in the Glenelg-Attadale inlier of the Caledonian Moine Thrust Nappe, Northwest Scotland*, University of Sheffield

PhD thesis.

RAWSON, J. R., CARSWELL, D. A. and SMALLWOOD, D. (2001): Garnet-bearing olivine-websterite within the Eastern Glenelg Lewisian of the Glenelg Inlier, NW Highlands, *Scottish Journal of Geology*, 37, pp. 27-34.

READ, H. H. (1931): *The Geology of Central Sutherland*, Memoir of the Geological Survey of Great Britain.

READ, H. H. (1961): Aspects of the Caledonian magmatism in Britain, *Liverpool and Manchester Geological Journal*, 2, pp. 653-83.

RICHEY, J. E. and KENNEDY, W. Q. (1939): The Moine and Sub-Moine Series of Morar, Inverness-shire, *Geological Survey of Great Britain Bulletin*, 2, pp. 26-45.

RICKWOOD, P. C. (1990): The anatomy of a dyke and the determination of propagation and magma flow directions, in RICKWOOD, P. C. and TUCKER, R. (eds): *Mafic Dykes and Emplacement Mechanisms* (Rotterdam: Balkema), pp. 81-100.

ROBERTS, A. M. (1984): *Stratigraphy and structure in Moine rocks along the Loch Quoich Line, Inverness-shire*, PhD thesis, University of Liverpool.

ROBERTS, A. M. and HARRIS, A. L. (1983): The

Loch Quoich Line - a limit of early Palaeozoic crustal reworking in the Moine of the northern Highlands of Scotland, *Journal of the Geological Society, London*, 140, pp. 883-92.

ROBERTS, A. M., SMITH, D. I. and HARRIS, A. L. (1984): The structural setting and tectonic significance of the Glen Dessary syenite, Inverness-shire, *Journal of the Geological Society, London*, 141, pp. 1033-42.

ROBERTS, A. M., STRACHAN, R. A., HARRIS, A. L., BARR, D. and HOLDSWORTH, R. E. (1987): The Sgurr Beag nappe: a reassessment of the northern Highland Moine, *Bulletin of the Geological Society of America*, 98, pp. 497-506.

ROCK, N. M. S., MACDONALD, R., WALKER, B. H., MAY, F., PEACOCK, J. D. and SCOTT, P. (1985): Intrusive metabasite belts within the Moine assemblage, west of Loch Ness, Scotland: evidence for metabasite modification by country rock interactions, *Journal of the Geological Society, London*, 142, pp. 643-61.

ROGERS, G. and DUNNING, G. R. (1991): Geochronology of appinitic and related granitic magmatism in the W Highlands of Scotland: constraints on the timing of transcurrent fault movement, *Journal of the Geological Society, London*, 148, pp. 17-27.

ROGERS, G., HYSLOP, E. K., STRACHAN, R. A., PATERSON, B. A. and HOLDSWORTH, R. E.

(1998): The structural setting and U-Pb geochronology of Knoydartian pegmatites in W. Inverness-shire: evidence for Neoproterozoic tectonothermal events in the Moine of NW Scotland, *Journal of the Geological Society, London*, 155, pp. 685-96.

ROGERS, G., KINNY, P. D., STRACHAN, R. A., FRIEND, C. R. L. and PATERSON, B. A. (2001): b geochronology of the Fort Augustus granite gneiss: constraints on the timing of Neoproterozoic and Palaeozoic tectonothermal events in the NW Highlands of Scotland, *Journal of the Geological*

Society, London, 158, pp. 7-14.

RYAN, P. D. and SOPER, N. J. (2001): Modelling anatexis in intra-cratonic rift basins: an example from the Neoproterozoic rocks of the Scottish Highlands, *Geological Magazine*, 138, pp. 577-88.

SANDERS, I. S. (1979): Observations on eclogite- and granulite-facies rocks in the basement of the Caledonides, in HARRIS, A. L., HOLLAND, C. H. and LEAKE, B. E. (eds): *The Caledonides of the British Isles - Reviewed*, Geological Society, London, Special Publication, 8, pp. 97-101.

SANDERS, I. S. (1988): Plagioclase breakdown and regeneration reactions in Grenville kyanite eclogite at Glenelg, NW Scotland *Contributions to Mineralogy and Petrology*, 98, pp. 33-39.

SANDERS, I. S., VAN CALSTEREN, P. W. C. HAWKESWORTH, C. J. (1984): A Grenville Sm-Nd age for the Glenelg eclogite in northwest Scotland, *Nature*, 312, pp. 439-40.

SMITH, D. I. (1979): Caledonian minor intrusions of the N Highlands of Scotland, in HARRIS, A. L., HOLLAND, C. H. and LEAKE, B. . (eds): *The Caledonides of the British Isles - Reviewed*, Geological Society, London, Special Publications, 8, pp. 129-37.

SMITH, D. I. and WATSON, J. V. (1983): Scale timing of movements on the Great Glen Fault, Scotland, *Geology*, 11, pp. 523-26.

SMITH, M., ROBERTSON, S. and ROLLIN, K. E. (1999): Rift basin architecture and stratigraphical implications for basement-cover relationships in the Neoproterozoic Grampian Group of the Scottish Caledonides, *Journal of the Geological Society, London*, 156, pp. 1163-73.

SNOKE, A. W. and TULLIS, J. (1998): An overview of fault rocks, in SNOKE, A. W., TULLIS, J. and TODD, V. R. (eds): *Fault-related rocks: a photographic atlas* (Princeton, New Jersey: Princeton University Press), pp. 3-18.

SNOKE, A. W., TULLIS, J. and TODD, V. R. (1998): *Fault-related rocks: a photographic atlas* (Princeton, NJ: Princeton University Press).

SOPER, N. J. (1971): The earliest Caledonian structures in the Moine Thrust belt, *Scottish Journal of Geology*, 7, pp. 241-47.

SOPER, N. J. and BROWN, P. E. (1971): Relationship between metamorphism and migmatization in the northern part of the Moine Nappe, *Scottish Journal of Geology*, 7, p. 305-25.

SOPER, N. J. and WILKINSON, P. (1975): The Moine Thrust and Moine Nappe at Loch Eriboll, Scotland, *Scottish Journal of Geology*, 11, pp. 239-59.

SOPER, N. J. and BARBER, A. J. (1982): A model for the deep structure of the Moine thrust zone, *Journal of the Geological Society, London*, 139, pp. 127-38.

SOPER, N. J. and ANDERTON, R. (1984): Did the Dalradian slides originate as extensional faults?, *Nature*, 307, pp. 357-60.

SOPER, N. J. and HUTTON, D. H. W. (1984): Late Caledonian sinistral displacements in Britain: Implications for a three-plate model, *Tectonics*, 3, pp. 781-94.

SOPER, N. J. and HARRIS, A. L. (1997): Report: Highland field workshops 1995-1996, *Scottish Journal of Geology*, 33, pp. 187-90.

- SOPER, N. J., HARRIS, A. L. and STRACHAN, R. A. (1998): Tectonostratigraphy of the Moine Supergroup: a synthesis, *Journal of the Geological Society, London*, 155, pp. 13-24.
- SOPER, N. J., RYAN, P. D. and DEWEY, J. F. (1999): Age of the Grampian orogeny in Scotland and Ireland, *Journal of the Geological Society, London*, 156, pp. 1231-36.
- SOPER, N. J., STRACHAN, R. A., HOLDSWORTH, R. E., GAYER, R. A. and GREILING, R. O. (1992): Sinistral transpression and the Silurian closure of Iapetus, *Journal of the Geological Society, London*, 149, pp. 871-80.
- STEPHENS, W. E. and HALLIDAY, A. N. (1984): Geochemical contrasts between late Caledonian granitoid plutons of northern, central and southern Scotland, *Transactions of the Royal Society of Edinburgh: Earth Sciences*, 75, pp. 259-73.
- STEPHENSON, D., BEVINS, R. E., MILLWARD, D., HIGHTON, A. J., PARSONS, I., STONE, P. and WADSWORTH, W. J. (1999): *Caledonian Igneous Rocks of Great Britain*, Geological Conservation Review Series, 17, (Peterborough: Joint Nature Conservation Committee).
- STEWART, A. D. (2002): *The Later Proterozoic Torridonian Rocks of Scotland: their Sedimentology, Geochemistry and Origin*, Geological Society, London, Memoir, 24, 130 pp.
- STEWART, M., STRACHAN, R. A. and HOLDSWORTH, R. E. (1997): Direct field evidence for sinistral displacements along the Great Glen Fault Zone: late Caledonian reactivation of a regional basement structure? *Journal of the Geological Society, London*, 154, pp. 135-39.
- STEWART, M., STRACHAN, R. A. and HOLDSWORTH, R. E. (1999): Structure and early kinematic history of the Great Glen Fault Zone, Scotland, *Tectonics*, 18, pp. 326-42.
- STEWART, M., HOLDSWORTH, R. E. and STRACHAN, R. A. (2000): Deformation processes and weakening mechanisms within the frictional-viscous transition zone of major crustal-scale faults: insights from the Great Glen Fault Zone, Scotland, *Journal of Structural Geology*, 22, pp. 543-60.
- STEWART, M., STRACHAN, R. A., MARTIN, M. W. and HOLDSWORTH, R. E. (2001): Dating early sinistral displacements along the Great Glen Fault Zone, Scotland: structural setting, emplacement and U-Pb geochronology of the syn-tectonic Clunes Tonalite, *Journal of the Geological Society, London*, 158, pp. 821-30.
- STOKER, M. S. (1982): Old Red Sandstone sedimentation and deformation in the Great Glen Fault Zone NW of Loch Linnhe, *Scottish Journal of Geology*, 19, pp. 369-86.
- STOKER, M. S. (1983): The stratigraphy and structure of the Moine rocks of eastern Ardgour, *Scottish Journal of Geology*, 19, pp. 369-85.
- STOKER, M. S., HITCHEN, K. and GRAHAM, C. C. (1993): *The geology of the Hebrides and West Shetland shelves and adjacent deepwater areas*, United Kingdom offshore regional report, British Geological Survey.
- STOREY, C. D. (2002): *Tectono-metamorphic evolution of the Glenelg-Attadale Inlier, northwest Scotland*, University of Leicester PhD thesis.
- STOREY, C. D., BREWER, T. S. and PARRISH, R. R. (2004): Late-Proterozoic tectonics in northwest Scotland: one contractional orogeny or several? *Precambrian Research*, 134, pp. 227-47.

- STOREY, C. D., BREWER, T. S. and TEMPERLEY, S. (2005): P-T conditions of Grenville-age eclogite facies metamorphism and amphibolite facies retrogression of the Glenelg-Attadale Inlier, NW Scotland, *Geological Magazine*, 142, pp. 605-15.
- STOREY, C. D., BREWER, T. S., ANCKIEWICZ, R., PARRISH, R. R. and THIRLWALL, M. F. (2010): Multiple high-pressure metamorphic events and crustal telescoping in the northwest Highlands of Scotland, *Journal of the Geological Society, London* (in press).
- STRACHAN, R. A. (1985): The stratigraphy and structure of the Moine rocks of the Loch Eil area, West Inverness-shire, *Scottish Journal of Geology*, 21, pp. 9-22.
- STRACHAN, R. A. (1986): Shallow marine sedimentation in the Proterozoic Moine succession, northern Scotland, *Precambrian Research*, 32, pp. 17-33.
- STRACHAN, R. A. and EVANS, J. A. (2008): Structural setting and U-Pb zircon geochronology of the Glen Scaddle Metagabbro: evidence for polyphase Scandian ductile deformation in the Caledonides of northern Scotland, *Geological Magazine*, 145, pp. 361-71.
- STRACHAN, R. A. and HOLDSWORTH, R. E. (1988): Basement-cover relationships and structure within the Moine rocks of central and southeast Sutherland, *Journal of the Geological Society, London*, 145, pp. 23-36.
- STRACHAN, R. A., MAY, F. and BARR, D. (1988): The Glenfinnan and Loch Eil Divisions of the Moine Assemblage, in WINCHESTER, J. A. (ed.): *Later Proterozoic Stratigraphy of the Northern Atlantic Regions* (Glasgow: Blackie), pp. 32-45.
- STRACHAN, R. A., SMITH, M., HARRIS, A. L. FETTES, D. J. (2002): The Northern Highland and Grampian terranes, in TREWIN, N. (ed): *Geology of Scotland* (4th edition), (London: Geological Society), pp. 81-147.
- STRACHAN, R. A., HOLDSWORTH, R. E., KRABBENDAM, M. and ALSOP, G. I. (2010): The Moine Supergroup of NW Scotland: insights into the analysis of polyorogenic supracrustal sequences, in LAW, R. D., BUTLER, R. W. H., HOLDSWORTH, R. E., KRABBENDAM, M. STRACHAN R. A. (eds): *Continental Tectonics and Mountain Building - The Legacy of Peach and Horne*, Geological Society, London, Special Publication, 335, pp. 231-
- SUTTON, J. and WATSON, J. V. (1954): The structural and stratigraphic succession of Fannich Forest and Strath Bran, Rossshire, *Quarterly Journal of the Geological Society of London*, 110, pp. 21-54.
- SUTTON, J. and WATSON, J. V. (1959): Structures in the Caledonides between Loch Duich and Glenelg, North-West Highlands, *Quarterly Journal of the Geological Society of London*, 114, pp. 231-54.
- SWETT, K. (1969): Interpretation of depositional and diagenetic history of Cambrian-Ordovician Succession of northwest Scotland, in KAY, M. (ed.): *North Atlantic Geology and Continental Drift*, American Association of Petroleum Geologists, Memoirs, 12, pp. 630-46.
- TALBOT, C. J. (1983): Microdiorite sheet intrusions as incompetent time and strain-markers in the Moine assemblage NW of the Great Glen Fault, Scotland, *Transactions of the Royal Society of Edinburgh: Earth Sciences*, 74, pp. 137-52.
- TANNER, P. W. G. (1965): *Structural and metamorphic history of the Kinloch Hourn area, Inverness-*

shire, Scotland, PhD thesis, University of London.

TANNER, P. W. G. (1971): The Sgurr Beag Slide - a major tectonic break within the Moinian of the western Highlands of Scotland, *Quarterly Journal of the Geological Society of London*, 126, pp. 435-63.

TANNER, P. W. G. (1976): Progressive regional metamorphism of thin calcareous bands from the Moinian rocks of NW Scotland, *Journal of Petrology*, 17, pp. 100-34.

TANNER, P. W. G. and MILLER, R. G. (1980): Geochemical evidence for loss of Na and K from Moinian calc-silicate pods during prograde metamorphism, *Geological Magazine*, 117, pp. 267-75.

TANNER, P. W. G. and EVANS, J. A. (2003): Late Precambrian U-Pb titanite age for peak regional metamorphism and deformation (Knoydartian orogeny) in the western Moine, Scotland, *Journal of the Geological Society, London*, 160, pp. 555-64.

TANNER, P. W. G., JOHNSTONE, G. S., SMITH, D. I. and HARRIS, A. L. (1970): Moinian Stratigraphy and the problem of the Central Ross-shire Inliers, *Bulletin of the Geological Society of America*, 81, pp. 299-306.

TEMPERLEY, S. and WINDLEY, B. F. (1997): Grenvillian extensional tectonics in northwest Scotland, *Geology*, 25, pp. 53-56.

THIRLWALL, M. F. (1988): Geochronology of late Caledonian magmatism in northern Britain, *Journal of the Geological Society, London*, 145, pp. 951-67.

TILLEY, C. E. (1936): Eulysites and related rock types from Loch Duich, Ross-shire, *Mineralogical Magazine*, 154, pp. 331-42.

VAN BREEMEN, O., PIDGEON, R.T. and JOHNSON, M. R. W. (1974): Precambrian and Palaeozoic pegmatites in the Moines of northern Scotland, *Journal of the Geological Society, London*, 130, pp. 493-507.

VAN BREEMEN, O., HALLIDAY, A. N., JOHNSON, M. R. W. and BOWES, D. R. (1978): Crustal additions in late Precambrian times, in BOWES, D. R. and LEAKE, B. E. (eds): Crustal Evolution in Northwestern Britain and Adjacent Regions, *Geological Journal Special Issue*, 10, pp. 81-106.

VAN BREEMEN, O., AFTALION, M. and JOHNSON, M. R. W. (1979a): Age of the Loch Borrolan complex, Assynt, and late movements along the Moine Thrust zone, *Journal of the Geological Society, London*, 136, pp. 489-96.

VAN BREEMEN, O., AFTALION, M., PANKHURST, R. J. and RICHARDSON, S. W. (1979b): Age of the Glen Dessary syenite, Inverness-shire: diachronous Palaeozoic metamorphism across the Great Glen, *Scottish Journal of Geology*, 15, pp. 49-62.

VANCE, D., STRACHAN, R. A. and JONES, K. A. (1998): Extensional versus compressional settings for metamorphism: garnet chronometry and pressure-temperature-time histories in the Moine Supergroup, northwest Scotland, *Geology*, 26, pp. 927-30.

WALKER, R. G. (1979): Shallow marine sands, in WALKER, R. G. (ed): Facies Models, *Geosciences Canada*, reprint series 1, pp. 75-89.

WHEELER, J., MORGAN, L. S. and PRIOR, D. J. (2004): Disequilibrium in the Ross of Mull contact

metamorphic aureole, Scotland: a consequence of polymetamorphism, *Journal of Petrology*, 45, pp. 835-53.

WHITE, S. H. (1998): Fault rocks from Ben Arnaboll, Moine Thrust Zone, Northwest Scotland, in SNOKE, A. W., TULLIS, J. and TODD, V. R. (eds): *Fault-related rocks: a photographic atlas* (Princeton, NJ: Princeton University Press), pp. 382-91.

WIBBERLEY, C. (2005): Initiation of basement thrust detachments by fault-zone reaction weakening, in BRUHN, D. and BURLINI, L. (eds): *High Strain Zones: Structure and Physical Properties*, Geological Society, London, Special Publications, 245, pp. 347-72.

WIBBERLEY, C. A. J. and BUTLER, R. W. H. (2010): Structure and internal deformation of the Arnaboll Thrust Sheet, north-west Scotland: implications for strain localization in thrust belts in LAW, R. D., BUTLER, R. W. H., HOLDSWORTH, R. E., KRABBENDAM, M. STRACHAN R. A. (eds): *Continental Tectonics and Mountain Building - The Legacy of Peach and Horne*, Geological Society, London, Special Publication (in press).

WILSON, G. (1953): Mullion and rodding structures in the Moine Series of Scotland, *Proceedings of the Geologists' Association*, 64, pp. 118-51.

WILSON, D. and SHEPHERD, J. (1979): The Carn Chuinneag granite and its aureole, in HARRIS, A. L., HOLLAND, C. H. and LEAKE, B. E. (eds): *The Caledonides of the British Isles - Reviewed*, Geological Society, London, Special Publications, 8, pp. 669-75.

WILSON, R. W., HOLDSWORTH, R. E., WILD, L. E., MCCAFFREY, K. J. W., ENGLAND, R. W., IMBER, J. and STRACHAN, R. A. (2010): Basement-influenced rifting and basin development: a reappraisal of post-Caledonian faulting patterns in the North Coast Transfer Zone, Scotland in LAW, R. D., BUTLER, R. W. H., HOLDSWORTH, R. E., KRABBENDAM, M. and STRACHAN R. A. (eds): *Continental Tectonics and Mountain Building - The Legacy of Peach and Horne*, Geological Society, London, Special Publication, 335, pp. 785-816.

WINCHESTER, J. A. (1971): Some geochemical distinctions between Moinian and Lewisian rocks and their use in establishing the identity of supposed inliers in the Moinian, *Scottish Journal of Geology*, 7, pp. 327-44.

WINCHESTER, J. A. (1974): The zonal pattern of regional metamorphism in the Scottish Caledonides, *Journal of the Geological Society, London*, 130, pp. 509-24.

WINCHESTER, J. A. (1976): Different Moine amphibolite suites in northern Ross-shire, *Scottish Journal of Geology*, 12, pp. 187-204.

WINCHESTER, J. A. (1984): The geochemistry of the Strathconon amphibolites, Northern Scotland, *Scottish Journal of Geology*, 20, 37-51.

WINCHESTER, J. A. and LAMBERT, R. ST. J. (1970): Geochemical distinctions between the Lewisian of Cassley, Durcha and Loch Shin, Sutherland and the surrounding Moinian, *Proceedings of the Geologists' Association*, 81, pp. 275-301.

WINCHESTER, J. A. and FLOYD, P. A. (1983). The geochemistry of the Ben Hope sill suite, northern Scotland, UK, *Chemical Geology*, 43, pp. 49-75.

WOODCOCK, N. H. and STRACHAN, R. A. (eds) (2000): *Geological History of Britain and Ireland* (Oxford: Blackwell).

ZANIEWSKI, A., REAVY, R. J. and HARRIS, A. L. (2006): Field relationships and emplacement of the Caledonian Ross of Mull Granite, Argyllshire, *Scottish Journal of Geology*, 42, pp. 179-89.

Retrieved from

'http://earthwise.bgs.ac.uk/index.php?title=Excursion_guide_to_the_Moine_geology_of_the_Northern_Highlands_of_Scotland&oldid=40306'

Categories:

- [Edinburgh Geological Society](#)
- [Geological Society of Glasgow](#)
- [Geological Excursions](#)

Navigation menu

Personal tools

- Not logged in
- [Talk](#)
- [Contributions](#)
- [Log in](#)
- [Request account](#)

Namespaces

- [Page](#)
- [Discussion](#)

Variants

Views

- [Read](#)
- [Edit](#)
- [View history](#)
- [PDF Export](#)

More

Search

Navigation

- [Main page](#)

- [Recent changes](#)
- [Random page](#)
- [Help about MediaWiki](#)

Tools

- [What links here](#)
- [Related changes](#)
- [Special pages](#)
- [Permanent link](#)
- [Page information](#)
- [Cite this page](#)
- [Browse properties](#)

• This page was last modified on 14 March 2019, at 15:12.

- [Privacy policy](#)
- [About Earthwise](#)
- [Disclaimers](#)

