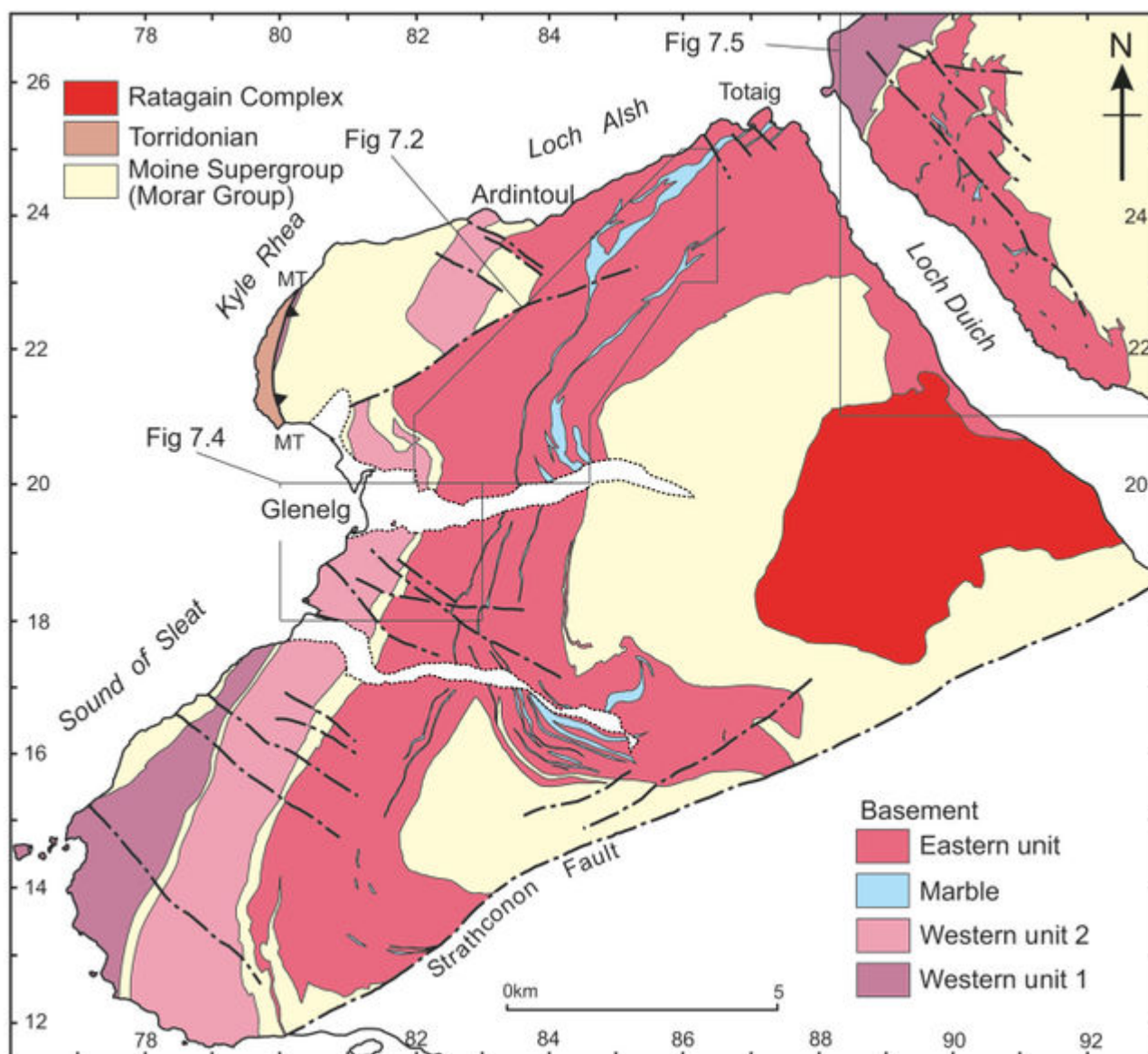


File:EGS MOI Fig 07 01.jpg

From Earthwise

[Jump to navigation](#) [Jump to search](#)

- [File](#)
- [File history](#)
- [File usage](#)
- [Metadata](#)



Size of this preview: [657 × 600 pixels](#). Other resolutions: [263 × 240 pixels](#) | [1,467 × 1,339 pixels](#).

[Original file](#) (1,467 × 1,339 pixels, file size: 384 KB, MIME type: image/jpeg)

Summary

description	{{1=Geological map of Glenelg and Loch Duich, showing the locations of (Fig. 7.2), (Fig. 7.4) and (Fig. 7.5). From: Fig. 7.1. Strachan, Rob et al. Editors. 2010. A geological excursion guide to the Moine geology of the Northern Highlands of Scotland. Edinburgh: Geological Society of Edinburgh and Geological Society of Glasgow}}
source	Edinburgh Geological Society
author	Edinburgh Geological Society

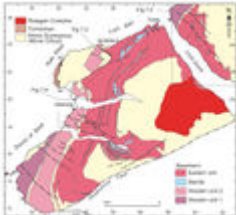
Licencing

{{subst:Custom license marker added by UW}}

This image is Copyright Edinburgh Geological Society. The images may be reproduced free of charge for any non-commercial use in any format or medium provided they are reproduced accurately and not used in a misleading or derogatory context. Where any images on this site are being republished or copied to others, the source of the material must be identified and the copyright status acknowledged. For all other uses of the images please contact the Edinburgh Geological Society. publications@edinburghgeolsoc.org

File history

Click on a date/time to view the file as it appeared at that time.

	Date/Time	Thumbnail	Dimensions	User	Comment
current	23:42, 21 December 2017		1,467 × 1,339 (384 KB)	Scotfot (talk contribs)	User created page with UploadWizard

- You cannot overwrite this file.

File usage

The following 3 pages link to this file:

- [Moine geology of East Glenelg and Loch Duich, East Glenelg - an excursion](#)
- [Moine geology of East Glenelg and Loch Duich, Loch Duich - an excursion](#)
- [Moine geology of East Glenelg and Loch Duich - an excursion](#)

Metadata

This file contains additional information, probably added from the digital camera or scanner used to create or digitise it.

If the file has been modified from its original state, some details may not fully reflect the modified

file.

Image title • Geological map of Glenelg and Loch Duich, showing the locations of (Fig. 7.2), (Fig. 7.4) and (Fig. 7.5). From: Fig. 7.1. Strachan, Rob et al. Editors. 2010. A geological excursion guide to the Moine geology of the Northern Highlands of Scotland. Edinburgh: Geological Society of Edinburgh and Geological Society of Glasgow

Retrieved from

http://earthwise.bgs.ac.uk/index.php?title=File:EGS_MOI_Fig_07_01.jpg&oldid=33266

Categories:

- [License tags](#)
- [Uploaded with UploadWizard](#)

Navigation menu

Personal tools

- Not logged in
- [Talk](#)
- [Contributions](#)
- [Log in](#)
- [Request account](#)

Namespaces

- [File](#)
- [Discussion](#)

Variants

Views

- [Read](#)
- [Edit](#)
- [View history](#)
- [PDF Export](#)

More

Search

Navigation

- [Main page](#)
- [Recent changes](#)
- [Random page](#)
- [Help about MediaWiki](#)

Tools

- [What links here](#)
- [Related changes](#)
- [Special pages](#)
- [Permanent link](#)
- [Page information](#)
- [Browse properties](#)

• This page was last modified on 21 December 2017, at 23:42.

- [Privacy policy](#)
- [About Earthwise](#)
- [Disclaimers](#)

