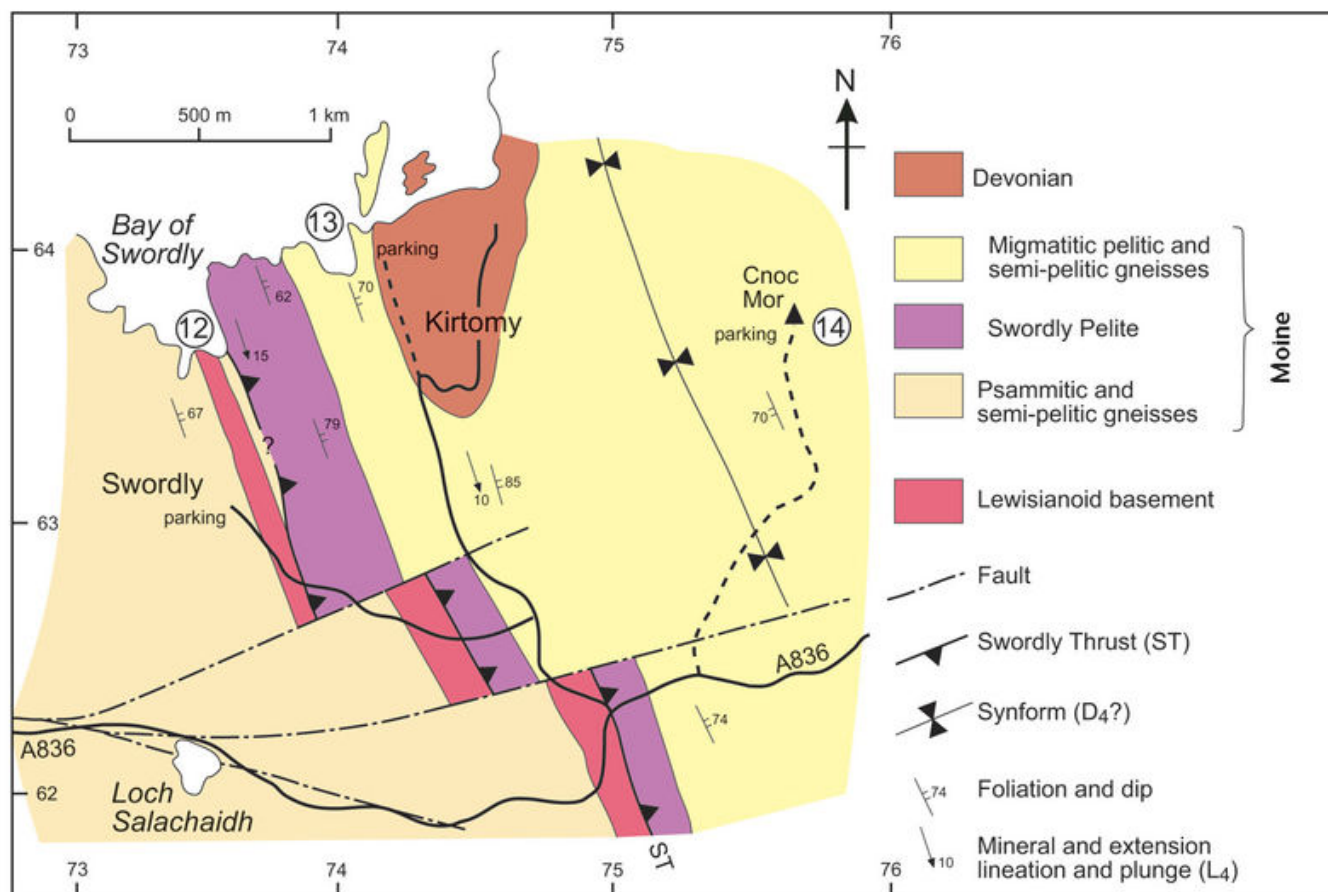


# File:EGS MOI Fig 13 10.jpg

From Earthwise

[Jump to navigation](#) [Jump to search](#)

- [File](#)
- [File history](#)
- [File usage](#)
- [Metadata](#)



Size of this preview: [800 × 541 pixels](#). Other resolutions: [320 × 217 pixels](#) | [1,515 × 1,025 pixels](#).

[Original file](#) (1,515 × 1,025 pixels, file size: 254 KB, MIME type: image/jpeg)

## Summary

<b>description</b>	{{1=Geological map of Localities 13.12, 13.13 and 13.14 (from Moorhouse et al., 1988 and Burns, 1994). From: Fig. 13.10. Strachan, Rob et al. Editors. 2010. A geological excursion guide to the Moine geology of the Northern Highlands of Scotland. Edinburgh: Geological Society of Edinburgh and Geological Society of Glasgow}}
<b>source</b>	Edinburgh Geological Society
<b>author</b>	Edinburgh Geological Society

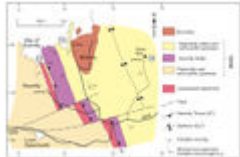
# Licencing

{{subst:Custom license marker added by UW}}

This image is Copyright Edinburgh Geological Society. The images may be reproduced free of charge for any non-commercial use in any format or medium provided they are reproduced accurately and not used in a misleading or derogatory context. Where any images on this site are being republished or copied to others, the source of the material must be identified and the copyright status acknowledged. For all other uses of the images please contact the Edinburgh Geological Society. [publications@edinburghgeolsoc.org](mailto:publications@edinburghgeolsoc.org)

# File history

Click on a date/time to view the file as it appeared at that time.

Date/Time	Thumbnail	Dimensions	User	Comment
current <a href="#">00:55, 22 December 2017</a>		1,515 × 1,025 (254 KB)	<a href="#">Scotfot</a> ( <a href="#">talk</a>   <a href="#">contribs</a> )	User created page with UploadWizard

- You cannot overwrite this file.

# File usage

The following page links to this file:

- [Moine geology of North Sutherland. Swordly Bay, Kirtomy Bay and Cnoc Mor - an excursion](#)

# Metadata

This file contains additional information, probably added from the digital camera or scanner used to create or digitise it.

If the file has been modified from its original state, some details may not fully reflect the modified file.

- Image title**
- Geological map of Localities 13.12, 13.13 and 13.14 (from Moorhouse et al., 1988 and Burns, 1994). From: Fig. 13.10. Strachan, Rob et al. Editors. 2010. A geological excursion guide to the Moine geology of the Northern Highlands of Scotland. Edinburgh: Geological Society of Edinburgh and Geological Society of Glasgow

Retrieved from

[http://earthwise.bgs.ac.uk/index.php?title=File:EGS\\_MOI\\_Fig\\_13\\_10.jpg&oldid=33312](http://earthwise.bgs.ac.uk/index.php?title=File:EGS_MOI_Fig_13_10.jpg&oldid=33312)

Categories:

- [License tags](#)
- [Uploaded with UploadWizard](#)

# Navigation menu

## Personal tools

- Not logged in
- [Talk](#)
- [Contributions](#)
- [Log in](#)
- [Request account](#)

## Namespaces

- [File](#)
- [Discussion](#)

## Variants

## Views

- [Read](#)
- [Edit](#)
- [View history](#)
- [PDF Export](#)

## More

## Search

## Navigation

- [Main page](#)
- [Recent changes](#)
- [Random page](#)
- [Help about MediaWiki](#)

## Tools

- [What links here](#)
- [Related changes](#)
- [Special pages](#)
- [Permanent link](#)
- [Page information](#)

- [Browse properties](#)

- This page was last modified on 22 December 2017, at 00:55.

- [Privacy policy](#)

- [About Earthwise](#)

- [Disclaimers](#)

