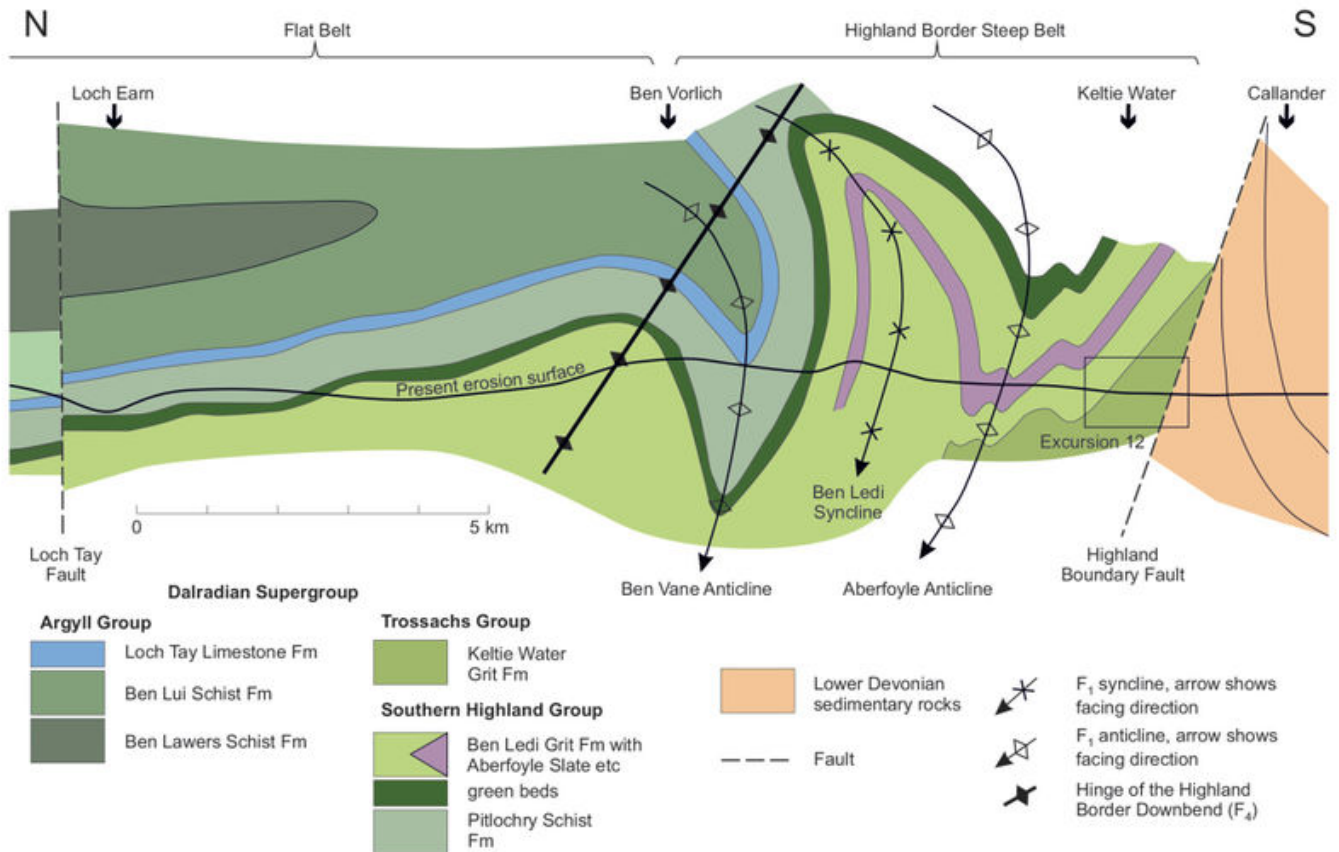


File:EGS STIRL FIG 00 02.jpg

From Earthwise

[Jump to navigation](#) [Jump to search](#)

- [File](#)
- [File history](#)
- [File usage](#)
- [Metadata](#)



Size of this preview: [800 × 551 pixels](#). Other resolutions: [320 × 220 pixels](#) | [1,965 × 1,353 pixels](#).

[Original file](#) (1,965 × 1,353 pixels, file size: 309 KB, MIME type: image/jpeg)

Summary

English: Figure S.2 Cross-section of the Tay Nappe from Callander due north to Loch Earn, showing the Flat Belt, Highland Border Downbend (F4) and major downward-facing F1 folds in the Highland Border Steep Belt (adapted from Tanner et al, 2013, fig. 13).

description



From: Browne, M.A.E. and Gillen, C. (editors) 2015. [A geological excursion guide to the Stirling and Perth area](#). Edinburgh: Edinburgh Geological Society in association with NMS Enterprises Limited. **Buy the book EGS.**

source Edinburgh Geological Society

author Edinburgh Geological Society

Licensing

{{subst:Custom license marker added by UW}}

This image is Copyright Edinburgh Geological Society. The images may be reproduced free of charge for any non-commercial use in any format or medium provided they are reproduced accurately and not used in a misleading or derogatory context. Where any images on this site are being republished or copied to others, the source of the material must be identified and the copyright status acknowledged. For all other uses of the images please contact the Edinburgh Geological Society. publications@edinburghgeolsoc.org

File history

Click on a date/time to view the file as it appeared at that time.

Date/Time	Thumbnail	Dimensions	User	Comment
current 10:35, 28 May 2019		1,965 × 1,353 (309 KB)	Scotfot (talk contribs)	User created page with UploadWizard

- You cannot overwrite this file.

File usage

The following 2 pages link to this file:

- [Bridge of Allan and Dumyat - an excursion](#)
- [Summary of geology of the Stirling and Perth area](#)

Metadata

This file contains additional information, probably added from the digital camera or scanner used to create or digitise it.

If the file has been modified from its original state, some details may not fully reflect the modified file.

Unique ID of original document A4B0FFBEA259888268CBCA21F2EE85E3
Date and time of digitising 08:32, 30 January 2019
File change date and time 10:54, 30 January 2019
Date metadata was last modified 10:54, 30 January 2019
IIM version 1,023

Retrieved from

http://earthwise.bgs.ac.uk/index.php?title=File:EGS_STIRL_FIG_00_02.jpg&oldid=40653

Categories:

- [License tags](#)
- [Uploaded with UploadWizard](#)

Navigation menu

Personal tools

- Not logged in
- [Talk](#)
- [Contributions](#)
- [Log in](#)
- [Request account](#)

Namespaces

- [File](#)
- [Discussion](#)

Variants

Views

- [Read](#)
- [Edit](#)
- [View history](#)
- [PDF Export](#)

More

Search

Navigation

- [Main page](#)
- [Recent changes](#)
- [Random page](#)
- [Help about MediaWiki](#)

Tools

- [What links here](#)
- [Related changes](#)
- [Special pages](#)
- [Permanent link](#)
- [Page information](#)
- [Browse properties](#)

• This page was last modified on 28 May 2019, at 10:35.

- [Privacy policy](#)
- [About Earthwise](#)
- [Disclaimers](#)

