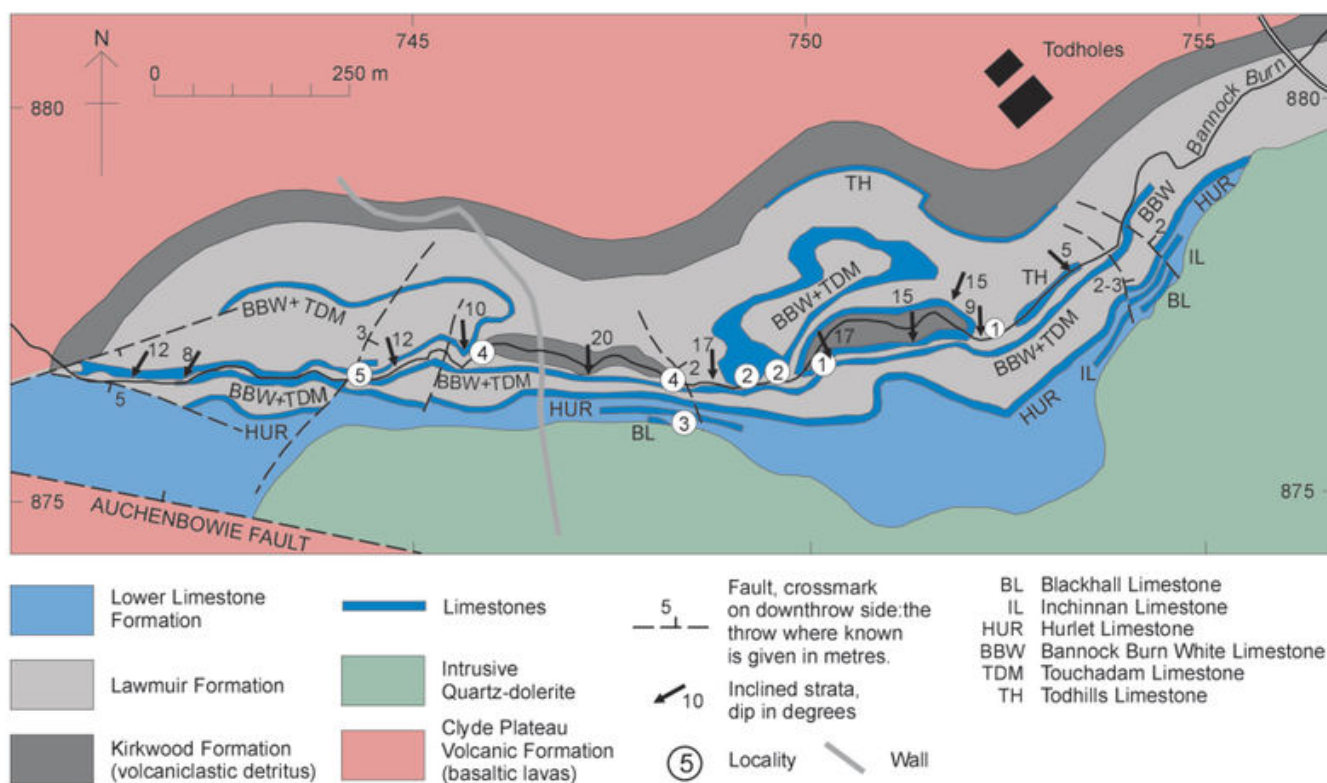


File:EGS STIRL FIG 02 01.jpg

From Earthwise

[Jump to navigation](#) [Jump to search](#)

- [File](#)
- [File history](#)
- [File usage](#)
- [Metadata](#)



Size of this preview: [800 × 477 pixels](#). Other resolutions: [320 × 191 pixels](#) | [1,941 × 1,158 pixels](#).

[Original file](#) (1,941 × 1,158 pixels, file size: 352 KB, MIME type: image/jpeg)

Summary

description

English: Figure 2.1 Map of late Viséan rocks exposed in the upper Bannock Burn near Todholes, showing localities for Excursion 2. Adapted from Francis et al. (1970, fig. 13).



From: Browne, M.A.E. and Gillen, C. (editors) 2015. [A geological excursion guide to the Stirling and Perth area](#). Edinburgh: Edinburgh Geological Society in association with NMS Enterprises Limited. **Buy the book** [EGS](#).

source Edinburgh Geological Society

author Edinburgh Geological Society


Licencing

{{subst:Custom license marker added by UW}}

This image is Copyright Edinburgh Geological Society. The images may be reproduced free of charge for any non-commercial use in any format or medium provided they are reproduced accurately and not used in a misleading or derogatory context. Where any images on this site are being republished or copied to others, the source of the material must be identified and the copyright status acknowledged. For all other uses of the images please contact the Edinburgh Geological Society. publications@edinburghgeolsoc.org

File history

Click on a date/time to view the file as it appeared at that time.

Date/Time	Thumbnail	Dimensions	User	Comment
current 09:50, 28 May 2019		1,941 × 1,158 (352 KB)	Scotfot (talk contribs)	User created page with UploadWizard

- You cannot overwrite this file.

File usage

The following 2 pages link to this file:

- [Bannock Burn - an excursion](#)
- [Geological excursion guide to the Stirling and Perth area](#)

Metadata

This file contains additional information, probably added from the digital camera or scanner used to create or digitise it.

If the file has been modified from its original state, some details may not fully reflect the modified file.

Unique ID of original document	4F0EE4BD390FA983F2DC31A03A1975DE
Date and time of digitising	08:32, 30 January 2019
File change date and time	10:53, 30 January 2019
Date metadata was last modified	10:53, 30 January 2019
IIM version	1,023

Retrieved from

'http://earthwise.bgs.ac.uk/index.php?title=File:EGS_STIRL_FIG_02_01.jpg&oldid=40655'

[Categories:](#)

- [License tags](#)
- [Uploaded with UploadWizard](#)

Navigation menu

Personal tools

- Not logged in
- [Talk](#)
- [Contributions](#)
- [Log in](#)
- [Request account](#)

Namespaces

- [File](#)
- [Discussion](#)

Variants

Views

- [Read](#)
- [Edit](#)
- [View history](#)
- [PDF Export](#)

More

Search

Navigation

- [Main page](#)
- [Recent changes](#)
- [Random page](#)
- [Help about MediaWiki](#)

Tools

- [What links here](#)

- [Related changes](#)
- [Special pages](#)
- [Permanent link](#)
- [Page information](#)
- [Browse properties](#)

• This page was last modified on 28 May 2019, at 09:50.

- [Privacy policy](#)
- [About Earthwise](#)
- [Disclaimers](#)

