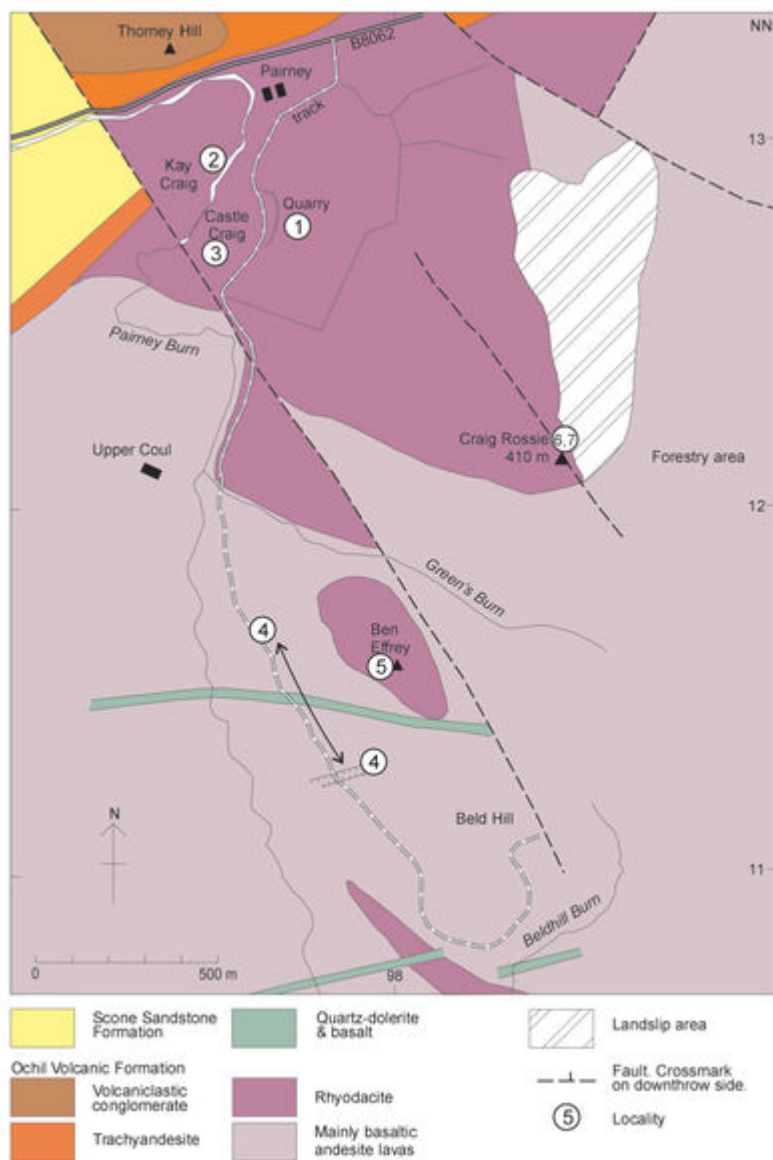


# File:EGS STIRL FIG 14 01.jpg

From Earthwise

[Jump to navigation](#) [Jump to search](#)

- [File](#)
- [File history](#)
- [File usage](#)
- [Metadata](#)



Size of this preview: [398 × 599 pixels](#). Other resolutions: [159 × 240 pixels](#) | [1,476 × 2,220 pixels](#).

[Original file](#) (1,476 × 2,220 pixels, file size: 343 KB, MIME type: image/jpeg)

## Summary

**English:** Figure 14.1 Geological map of the area around Craig Rossie, showing localities for Excursion 14.

### description



From: Browne, M.A.E. and Gillen, C. (editors) 2015. [A geological excursion guide to the Stirling and Perth area](#). Edinburgh: Edinburgh Geological Society in association with NMS Enterprises Limited. **Buy the book [EGS](#)**.

**source** Edinburgh Geological Society

**author** Edinburgh Geological Society


## Licencing

{{subst:Custom license marker added by UW}}

This image is Copyright Edinburgh Geological Society. The images may be reproduced free of charge for any non-commercial use in any format or medium provided they are reproduced accurately and not used in a misleading or derogatory context. Where any images on this site are being republished or copied to others, the source of the material must be identified and the copyright status acknowledged. For all other uses of the images please contact the Edinburgh Geological Society. [publications@edinburghgeolsoc.org](mailto:publications@edinburghgeolsoc.org)

## File history

Click on a date/time to view the file as it appeared at that time.

Date/Time	Thumbnail	Dimensions	User	Comment
current <a href="#">11:42, 28 May 2019</a>		1,476 × 2,220 (343 KB)	<a href="#">Scotfot</a> ( <a href="#">talk</a>   <a href="#">contribs</a> )	User created page with UploadWizard

- You cannot overwrite this file.

## File usage

The following 2 pages link to this file:

- [Craig Rossie - an excursion](#)
- [Geological excursion guide to the Stirling and Perth area](#)

# Metadata

This file contains additional information, probably added from the digital camera or scanner used to create or digitise it.

If the file has been modified from its original state, some details may not fully reflect the modified file.

**Unique ID of original document** EB0180BD8AB18D61AED09868513B3A8F  
**Date and time of digitising** 08:33, 30 January 2019  
**File change date and time** 11:04, 30 January 2019  
**Date metadata was last modified** 11:04, 30 January 2019  
**IIM version** 1,023

Retrieved from

[http://earthwise.bgs.ac.uk/index.php?title=File:EGS\\_STIRL\\_FIG\\_14\\_01.jpg&oldid=40677](http://earthwise.bgs.ac.uk/index.php?title=File:EGS_STIRL_FIG_14_01.jpg&oldid=40677)

Categories:

- [License tags](#)
- [Uploaded with UploadWizard](#)

## Navigation menu

### Personal tools

- Not logged in
- [Talk](#)
- [Contributions](#)
- [Log in](#)
- [Request account](#)

### Namespaces

- [File](#)
- [Discussion](#)

### Variants

### Views

- [Read](#)
- [Edit](#)
- [View history](#)
- [PDF Export](#)

## More

## Search

## Navigation

- [Main page](#)
- [Recent changes](#)
- [Random page](#)
- [Help about MediaWiki](#)

## Tools

- [What links here](#)
- [Related changes](#)
- [Special pages](#)
- [Permanent link](#)
- [Page information](#)
- [Browse properties](#)

• This page was last modified on 28 May 2019, at 11:42.

- [Privacy policy](#)
- [About Earthwise](#)
- [Disclaimers](#)

