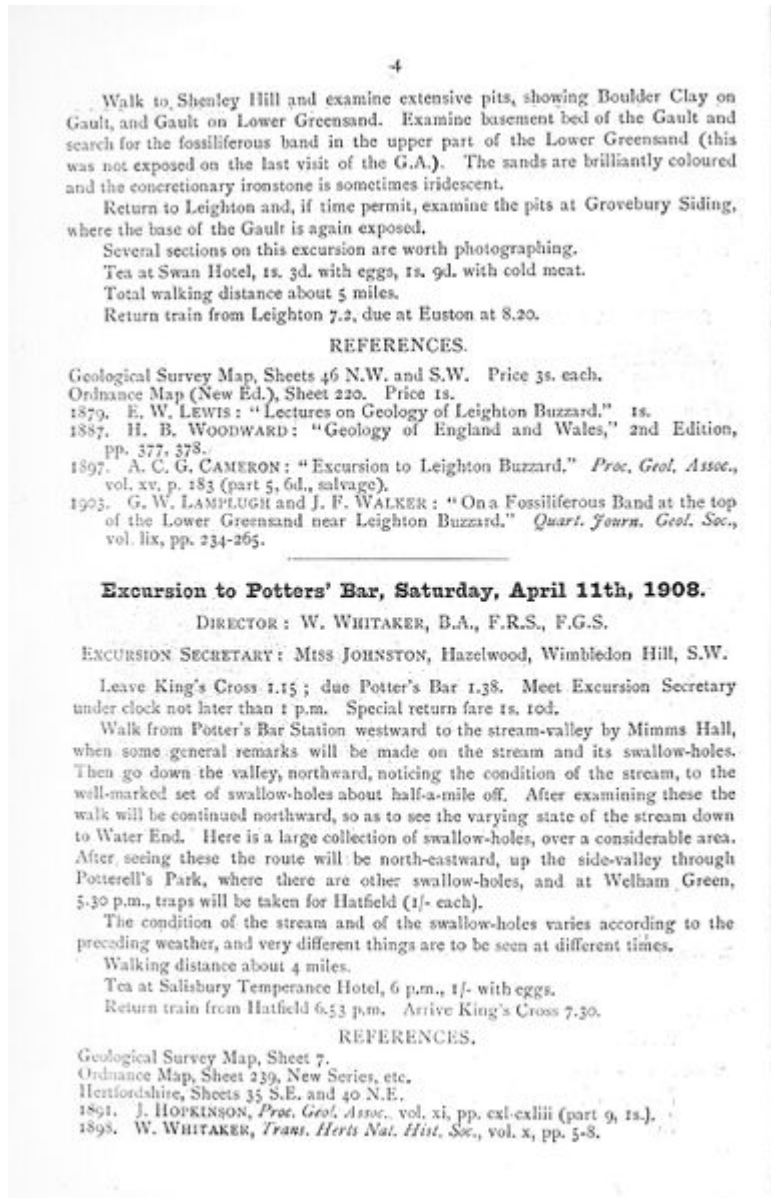


File:FileGA Image 0208.jpg

From Earthwise

[Jump to navigation](#) [Jump to search](#)

- [File](#)
- [File history](#)
- [File usage](#)
- [Metadata](#)



Size of this preview: [386 × 599 pixels](#). Other resolutions: [154 × 240 pixels](#) | [902 × 1,400 pixels](#).

[Original file](#) (902 × 1,400 pixels, file size: 412 KB, MIME type: image/jpeg)

Summary

Geologists' Association Circular No. 93. Session 1907-1908. Excursion to Potters' Bar, Saturday, April 11th, 1908


Copyright: Geologists' Association

Licencing

This image is used with courtesy of the copyright holder. Copyright information is display in the image caption and/or image summary.

File history

Click on a date/time to view the file as it appeared at that time.

Date/Time	Thumbnail	Dimensions	User	Comment
current 19:14, 16 September 2020		902 × 1,400 (412 KB)	Scotfot (talk contribs)	Geologists' Association Circular No. 93. Session 1907-1908. Excursion to Potters' Bar, Saturday, April 11th, 1908 Copyright: Geologists' Association

- You cannot overwrite this file.

File usage

There are no pages that use this file.

Metadata

This file contains additional information, probably added from the digital camera or scanner used to create or digitise it.

If the file has been modified from its original state, some details may not fully reflect the modified file.

Camera manufacturer	FUJIFILM
Camera model	X-E1
Exposure time	1/30 sec (0.033333333333333)
F Number	f/8
ISO speed rating	200
Date and time of data generation	19:56, 12 September 2020
Lens focal length	44.4 mm
Orientation	Normal
Horizontal resolution	72 dpi
Vertical resolution	72 dpi
Software used	Adobe Photoshop 7.0
File change date and time	19:58, 16 September 2020

Y and C positioning	Co-sited
Exposure Programme	Aperture priority
Exif version	2.3
Date and time of digitising	19:56, 12 September 2020
Meaning of each component	<ol style="list-style-type: none"> 1. Y 2. Cb 3. Cr 4. does not exist
Image compression mode	3.2
APEX shutter speed	5
APEX aperture	6
APEX brightness	6.87
APEX exposure bias	1.67
Maximum land aperture	3 APEX (f/2.83)
Metering mode	Pattern
Light source	Unknown
Flash	Flash did not fire, compulsory flash suppression
Supported Flashpix version	0,100
Colour space	sRGB
Focal plane X resolution	2,092
Focal plane Y resolution	2,092
Focal plane resolution unit	3
Sensing method	One-chip colour area sensor
File source	Digital still camera
Scene type	A directly photographed image
Custom image processing	Custom process
Exposure mode	Auto exposure
White balance	Auto white balance
Focal length in 35 mm film	67 mm
Scene capture type	Standard
Sharpness	Normal
Subject distance range	Unknown
IIM version	2

Retrieved from

http://earthwise.bgs.ac.uk/index.php?title=File:FileGA_Image_0208.jpg&oldid=50157

Category:

- [License tags](#)

Navigation menu

Personal tools

- Not logged in
- [Talk](#)

- [Contributions](#)
- [Log in](#)
- [Request account](#)

Namespaces

- [File](#)
- [Discussion](#)

Variants

Views

- [Read](#)
- [Edit](#)
- [View history](#)
- [PDF Export](#)

More

Search

Navigation

- [Main page](#)
- [Recent changes](#)
- [Random page](#)
- [Help about MediaWiki](#)

Tools

- [What links here](#)
- [Related changes](#)
- [Special pages](#)
- [Permanent link](#)
- [Page information](#)
- [Browse properties](#)

- This page was last modified on 16 September 2020, at 19:14.

- [Privacy policy](#)
- [About Earthwise](#)
- [Disclaimers](#)



•



•

