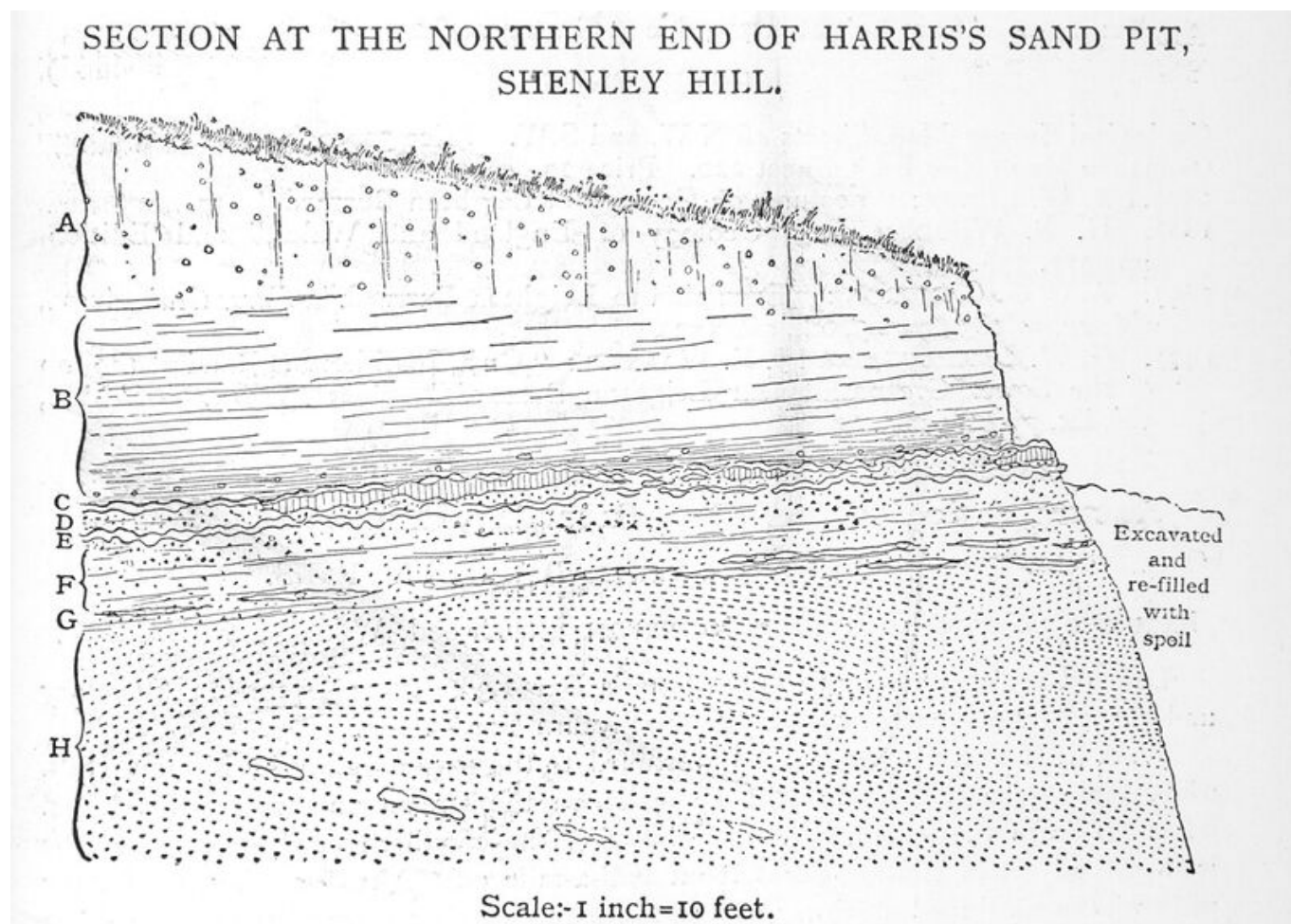


# File:GA Image 0206.jpg

From Earthwise

[Jump to navigation](#) [Jump to search](#)

- [File](#)
- [File history](#)
- [File usage](#)



Size of this preview: [800 × 572 pixels](#). Other resolutions: [320 × 229 pixels](#) | [1,400 × 1,001 pixels](#).

[Original file](#) (1,400 × 1,001 pixels, file size: 660 KB, MIME type: image/jpeg)

## Summary

Section at the northern end of Harris's Sand Pit, Shenley Hill. Scale 1 inch = 10 feet. Reproduced by Permission of the Council of the Geological Society of London. Geologists' Association Circular No. 93. Session 1907-1908 p.3. Excursion to Leighton Buzzard. Saturday, April 4th, 1908.

Brown clayey soil with small stones 1 ft.

A. Bluish-grey Boulder Clay composed of rearranged Gault speckled, with small pieces of chalk, flint, iron grit, and a few pebbles of quartz, etc. 2 to 6 ft.

merging downwards into

B. Gault : bluish-grey shaly Clay in the upper part and dark blue below; with a few pyritous clay-stone nodules just above the base 4 to 7 ft.

C. Irregular band of iron grit with smooth worn wrinkled surface : usually dark - liver-red, but in places crimson to 3 ins.

D. Ochreous or greenish-yellow loamy mud, grit and breccia ; replaced here and there by lenticles of pale flesh-coloured or yellowish gritty limestone full of fossils 1 to 2 ft.

E. Undulating iron grit band as a rule sharply defined, but in one place approaching the upper band and there becoming lenticular and confused ... 2 to 3 ins.

F. Greyish greensand moist and loamy, with clayey streaks and lenticles of pebbly. 2 to 3 ft.

G. Lenticles of dark-red and ochreous iron-grit with included nodules of sandy pyritous clay-stone ; streaks of fuller's earth, dark clayey greensand, and ochreous loam below ; forming a well-defined band capping the "silver-sands" 1 to 1½ ft.

H. "Silver-sands " : clean white or iron-stained sand, strongly cross-bedded, with sporadic masses of ironstone sometimes containing traces of wood 10 to 15 ft. seen.

**Copyright: Geologists' Association.**

## Licensing

This image is used with courtesy of the copyright holder. Copyright information is displayed in the image caption and/or image summary.

## File history

Click on a date/time to view the file as it appeared at that time.

Date/Time	Thumbnail	Dimensions	User	Comment
-----------	-----------	------------	------	---------

current [19:47, 15 September 2020](#)



1,400 ×  
1,001 (660  
KB)

[Scotfot](#)  
([talk](#) |  
[contribs](#))

Section at the northern end of Harris's Sand Pit, Shenley Hill. Scale 1 inch = 10 feet. Reproduced by Permission of the Council of the Geological Society of London. Geologists' Association Circular No. 93. Session 1907-1908 p.3. Excursion to Leighton Buzzard. Saturday, April 4th, 1908. Copyright: Geologists' Association.

- You cannot overwrite this file.

## File usage

The following page links to this file:

- [Excursion to Leighton Buzzard. Saturday, April 4th, 1908 - Geologists' Association excursion](#)

Retrieved from '[http://earthwise.bgs.ac.uk/index.php?title=File:GA\\_Image\\_0206.jpg&oldid=50120](http://earthwise.bgs.ac.uk/index.php?title=File:GA_Image_0206.jpg&oldid=50120)'  
[Category](#):

- [License tags](#)

## Navigation menu

### Personal tools

- Not logged in
- [Talk](#)
- [Contributions](#)
- [Log in](#)
- [Request account](#)

### Namespaces

- [File](#)
- [Discussion](#)

## Variants

## Views

- [Read](#)
- [Edit](#)
- [View history](#)
- [PDF Export](#)

## More

## Search

## Navigation

- [Main page](#)
- [Recent changes](#)
- [Random page](#)
- [Help about MediaWiki](#)

## Tools

- [What links here](#)
- [Related changes](#)
- [Special pages](#)
- [Permanent link](#)
- [Page information](#)
- [Browse properties](#)

• This page was last modified on 15 September 2020, at 20:18.

- [Privacy policy](#)
- [About Earthwise](#)
- [Disclaimers](#)

•



•

