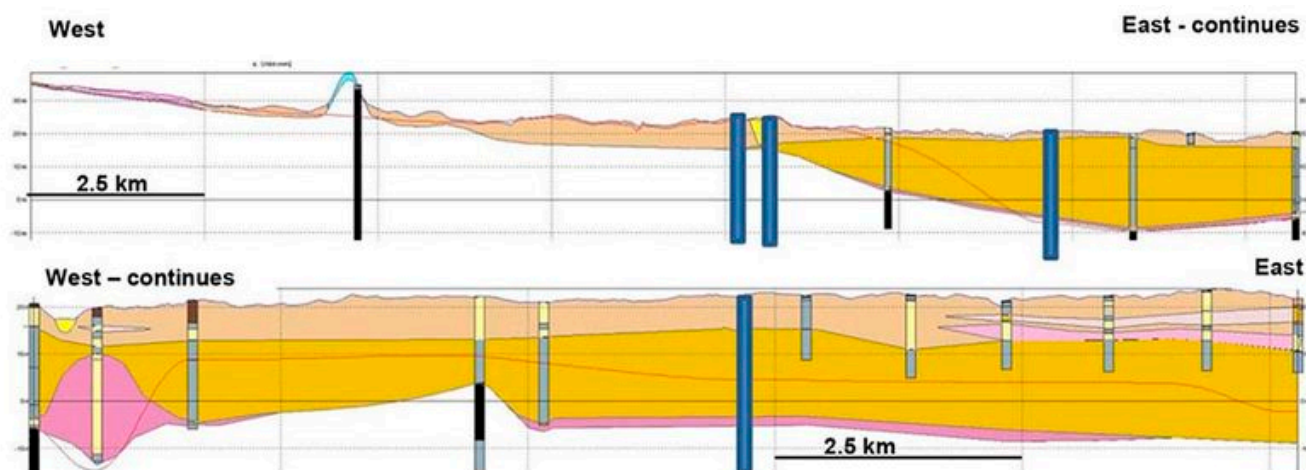


# File:OR15064fig13a.jpg

From Earthwise

[Jump to navigation](#) [Jump to search](#)

- [File](#)
- [File history](#)
- [File usage](#)
- [Metadata](#)



Size of this preview: [800 × 287 pixels](#). Other resolutions: [320 × 115 pixels](#) | [1,000 × 359 pixels](#).

[Original file](#) (1,000 × 359 pixels, file size: 66 KB, MIME type: image/jpeg)

## Summary

<b>description</b>	<b>English:</b> OR/15/064 The Vale of Pickering: an initial summary of the Quaternary/superficial geology and data holdings
<b>source</b>	OR/15/064 The Vale of Pickering: an initial summary of the Quaternary/superficial geology and data holdings
<b>author</b>	J R Ford, L Hughes, H F Burke and J R Lee

## Licencing

{{subst:Custom license marker added by UW}}

Download of 1000 x 1000 pixel images is free for all non-commercial use - all we ask in return is for you to acknowledge BGS when using our images. Click our Terms and Conditions link below for information on acknowledgement text, and to find out about using our images commercially.

### Copyright

The images featured on this site unless otherwise indicated are copyright material of the UK Research and Innovation (UKRI), of which the British Geological Survey is a component body. The British Geological Survey encourages the use of its material in promoting geological and environmental sciences. The images may be reproduced free of charge for any non-commercial use in any format or medium provided they are reproduced accurately and not used in a misleading or derogatory context. Where any images on this site are being republished or copied to others, the source of the material must be identified and the copyright status acknowledged. The permission to reproduce UKRI protected material does not extend to any images on this site which are identified as being the copyright of a third party. Authorisation to reproduce such material must be obtained from the copyright holders concerned.

### Non-commercial Use

Use of the images downloaded from this site and reproduced digitally or otherwise may only be used for non-commercial purposes, which are:-

- Private study or research for a non-commercial purpose
- Education - for teaching, preparation and examination purposes

When using the images please credit 'British Geological Survey' and include the catalogue reference ('P Number') of the item to allow others to access the original image or document. Non-commercial users of the images from this site are restricted to downloading no more than 30 images, without seeking further permission from [enquiries@bgs.ac.uk](mailto:enquiries@bgs.ac.uk)

### Commercial Use

For commercial use of these images for which higher resolution images are available, individual permissions and/or licences arrangements should be agreed by contacting [enquiries@bgs.ac.uk](mailto:enquiries@bgs.ac.uk) Commercial use will include publications in books (including educational books), newspapers, journals, magazines, CDs and DVDs, etc, where a cover charge is applied; broadcasts on TV, film and theatre; and display in trade fairs, galleries, etc. If you are in doubt as to whether your intended use is commercial, please contact [enquiries@bgs.ac.uk](mailto:enquiries@bgs.ac.uk)

### Warranty


Use of the images downloaded from this site is at the users own risk. UKRI gives no warranty as to the quality of the images or the medium on which they are provided or their suitability for any use.

### Ordnance Survey topography

Maps and diagrams in Earthwise use topography based on Ordnance Survey mapping. The National Grid and other Ordnance Survey data ©Crown Copyright and database rights 2015. Ordnance Survey Licence No. 100021290 EUL.

## File history

Click on a date/time to view the file as it appeared at that time.

Date/Time	Thumbnail	Dimensions	User	Comment
current <a href="#">16:41, 20 January 2016</a>		1,000 × 359 (66 KB)	<a href="#">Dbk</a> ( <a href="#">talk</a>   <a href="#">contribs</a> )	User created page with UploadWizard

- You cannot overwrite this file.

## File usage

The following page links to this file:

- [OR/15/064 Cross section interpretation](#)

## Metadata

This file contains additional information, probably added from the digital camera or scanner used to create or digitise it.

If the file has been modified from its original state, some details may not fully reflect the modified file.

<b>Author</b>	cesh
<b>Date and time of digitising</b>	16:26, 11 December 2015
<b>Software used</b>	Adobe Photoshop CC 2015 (Windows)
<b>File change date and time</b>	14:17, 18 January 2016
<b>Date metadata was last modified</b>	14:17, 18 January 2016
<b>Unique ID of original document</b>	xmp.did:c3847356-06d7-e54a-a7b8-6eb9c3039c11
<b>Short title</b>	• BGS Report, single column layout
<b>IIM version</b>	5

Retrieved from '<http://earthwise.bgs.ac.uk/index.php?title=File:OR15064fig13a.jpg&oldid=24609>'

[Categories](#):

- [License tags](#)
- [Uploaded with UploadWizard](#)

## Navigation menu

### Personal tools

- Not logged in
- [Talk](#)
- [Contributions](#)
- [Log in](#)
- [Request account](#)

### Namespaces

- [File](#)
- [Discussion](#)

### Variants

### Views

- [Read](#)
- [Edit](#)

- [View history](#)
- [PDF Export](#)

□

## More

## Search

## Navigation

- [Main page](#)
- [Recent changes](#)
- [Random page](#)
- [Help about MediaWiki](#)

## Tools

- [What links here](#)
- [Related changes](#)
- [Special pages](#)
- [Permanent link](#)
- [Page information](#)
- [Browse properties](#)

• This page was last modified on 20 January 2016, at 16:41.

- [Privacy policy](#)
- [About Earthwise](#)
- [Disclaimers](#)

