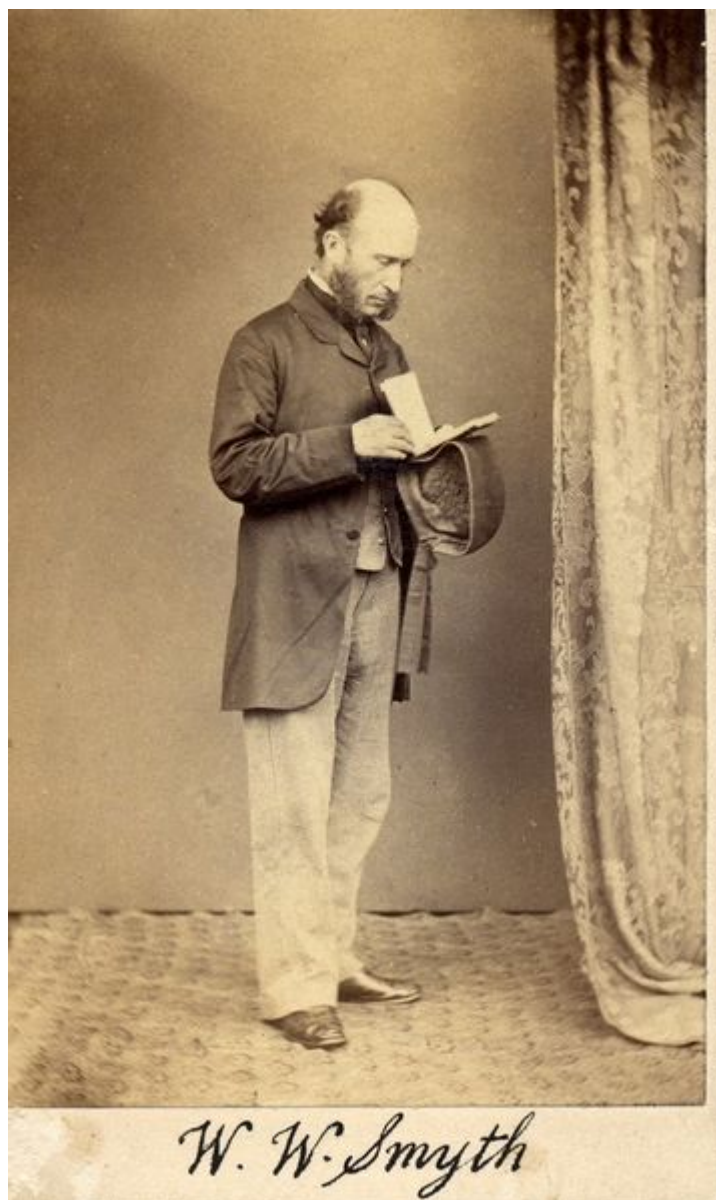


File:P575752.jpg

From Earthwise

[Jump to navigation](#) [Jump to search](#)

- [File](#)
- [File history](#)
- [File usage](#)



Size of this preview: [357 × 599 pixels](#). Other resolutions: [143 × 240 pixels](#) | [596 × 1,000 pixels](#).

[Original file](#) (596 × 1,000 pixels, file size: 163 KB, MIME type: image/jpeg)

Summary

| | |
|--------------------|--|
| description | English: Warrington Wilkinson Smyth 1817 - 1890. appointed Mining Geologist 1845, Lecturer in Mining to School of Mines 1851-90. Appointed Inspector of Mineral property of the Duchy of Cornwall 1851 then Chief Mineral Inspector to the Crown; Fellow of the Royal Society 1858; President of the Geological Society 1866-68; Knighted 1887. |
| source | British Geological Survey |
| author | British Geological Survey |

Licencing

{{subst:Custom license marker added by UW}}

Download of 1000 x 1000 pixel images is free for all non-commercial use - all we ask in return is for you to acknowledge BGS when using our images. Click our Terms and Conditions link below for information on acknowledgement text, and to find out about using our images commercially.

Copyright

The images featured on this site unless otherwise indicated are copyright material of the UK Research and Innovation (UKRI), of which the British Geological Survey is a component body. The British Geological Survey encourages the use of its material in promoting geological and environmental sciences. The images may be reproduced free of charge for any non-commercial use in any format or medium provided they are reproduced accurately and not used in a misleading or derogatory context. Where any images on this site are being republished or copied to others, the source of the material must be identified and the copyright status acknowledged. The permission to reproduce UKRI protected material does not extend to any images on this site which are identified as being the copyright of a third party. Authorisation to reproduce such material must be obtained from the copyright holders concerned.

Non-commercial Use

Use of the images downloaded from this site and reproduced digitally or otherwise may only be used for non-commercial purposes, which are:-

- Private study or research for a non-commercial purpose
- Education - for teaching, preparation and examination purposes

When using the images please credit 'British Geological Survey' and include the catalogue reference ('P Number') of the item to allow others to access the original image or document. Non-commercial users of the images from this site are restricted to downloading no more than 30 images, without seeking further permission from enquiries@bgs.ac.uk

Commercial Use

For commercial use of these images for which higher resolution images are available, individual permissions and/or licences arrangements should be agreed by contacting enquiries@bgs.ac.uk Commercial use will include publications in books (including educational books), newspapers, journals, magazines, CDs and DVDs, etc, where a cover charge is applied; broadcasts on TV, film and theatre; and display in trade fairs, galleries, etc. If you are in doubt as to whether your intended use is commercial, please contact enquiries@bgs.ac.uk

Warranty


Use of the images downloaded from this site is at the users own risk. UKRI gives no warranty as to the quality of the images or the medium on which they are provided or their suitability for any use.

Ordnance Survey topography

Maps and diagrams in Earthwise use topography based on Ordnance Survey mapping. The National Grid and other Ordnance Survey data ©Crown Copyright and database rights 2015. Ordnance Survey Licence No. 100021290 EUL.

File history

Click on a date/time to view the file as it appeared at that time.

| Date/Time | Thumbnail | Dimensions | User | Comment |
|---|---|----------------------|---|-------------------------------------|
| current 09:35, 3 October 2019 |  | 596 × 1,000 (163 KB) | Scotfot (talk contribs) | User created page with UploadWizard |

- You cannot overwrite this file.

File usage

The following 2 pages link to this file:

- [Geological Survey of Great Britain and Ireland: A contemporary account of the Survey, 1897](#)
- [Warrington Wilkinson Smyth M.A., F.R.S.](#)

Retrieved from '<http://earthwise.bgs.ac.uk/index.php?title=File:P575752.jpg&oldid=43035>'

Categories:

- [License tags](#)
- [Uploaded with UploadWizard](#)

Navigation menu

Personal tools

- Not logged in
- [Talk](#)
- [Contributions](#)
- [Log in](#)
- [Request account](#)

Namespaces

- [File](#)
- [Discussion](#)

Variants

Views

- [Read](#)
- [Edit](#)
- [View history](#)
- [PDF Export](#)

More

Search

Navigation

- [Main page](#)
- [Recent changes](#)
- [Random page](#)
- [Help about MediaWiki](#)

Tools

- [What links here](#)
- [Related changes](#)
- [Special pages](#)
- [Permanent link](#)
- [Page information](#)
- [Browse properties](#)

• This page was last modified on 3 October 2019, at 09:35.

- [Privacy policy](#)
- [About Earthwise](#)
- [Disclaimers](#)

