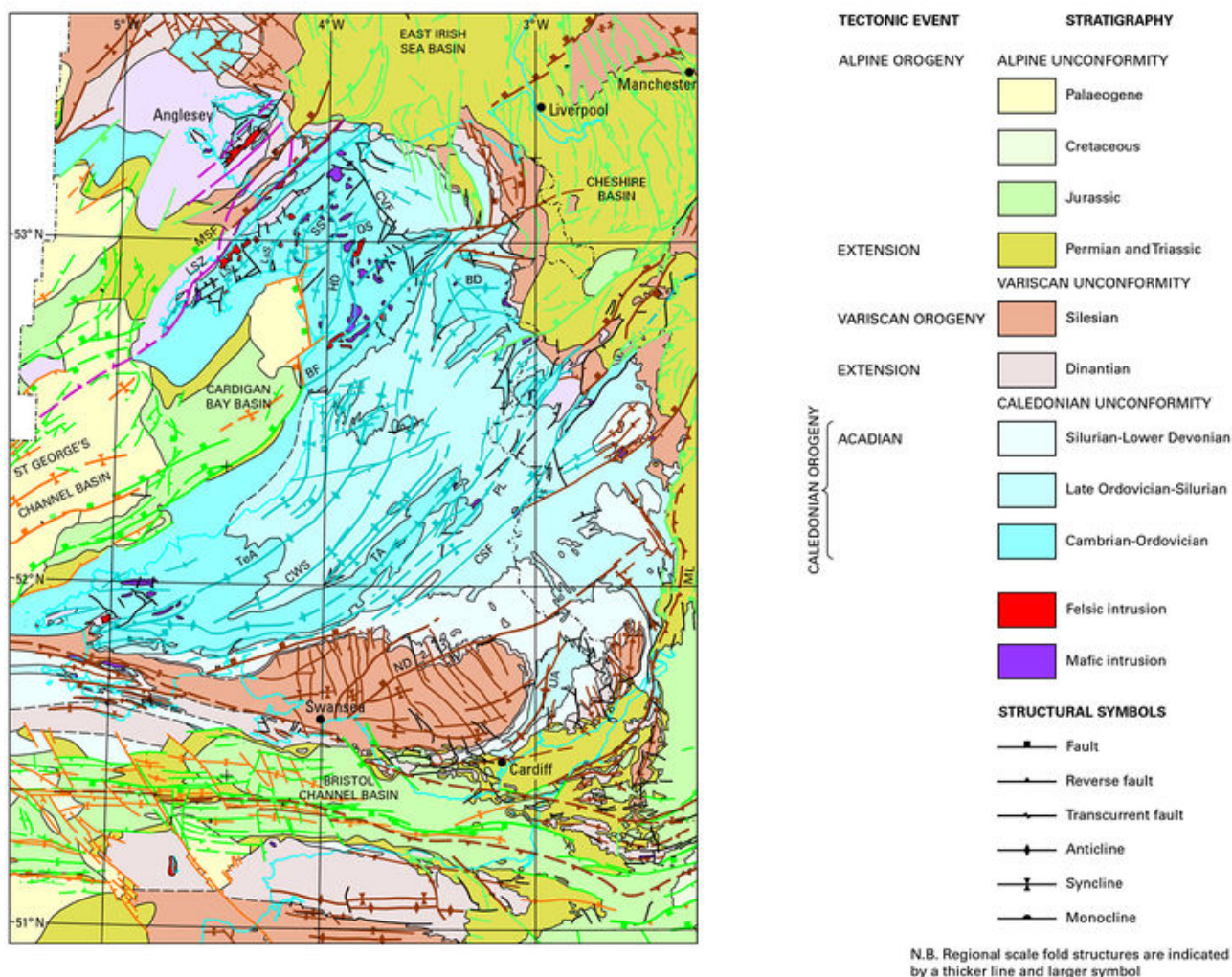


# File:P916176.jpg

From Earthwise

[Jump to navigation](#) [Jump to search](#)

- [File](#)
- [File history](#)
- [File usage](#)
- [Metadata](#)



Size of this preview: [761 × 600 pixels](#). Other resolutions: [305 × 240 pixels](#) | [1,400 × 1,103 pixels](#).

[Original file](#) (1,400 × 1,103 pixels, file size: 698 KB, MIME type: image/jpeg)

## Summary

Tectonic map of Wales — key opposite (adapted from BGS, 1996). BD Berwyn Dome; BF Bala Fault; CSF Church Stretton Fault; CVF Conwy Valley Fault; CWS Central Wales Syncline; DS Dolwyddelan Syncline; HD Harlech Dome; LS Llyn Syncline; Ls Llanystumdwy Syncline; LSZ Llyn Shear Zone; ML Malvern Lineament; MSF Menai Straits Fault; ND Neath Disturbance; PL Pontesford Lineament; SS Snowdon Syncline; TA Tywi Anticline; TeA Teifi Anticline; UA Usk Anticline. Inferred age of structures: magenta Precambrian to Early Palaeozoic; blue Acadian; brown Variscan; green

Mesozoic; orange Cainozoic (mainly Alpine). Key to Figure 31. P916176. Figure 31 in Howells, M F. 2007. British regional geology: Wales. Keyworth, Nottingham: British Geological Survey.

## Licencing

Download of 1000 x 1000 pixel images is free for all non-commercial use - all we ask in return is for you to acknowledge BGS when using our images. Click our Terms and Conditions link below for information on acknowledgement text, and to find out about using our images commercially.

### Copyright

The images featured on this site unless otherwise indicated are copyright material of the Natural Environment Research Council (NERC), of which the British Geological Survey is a component body. The British Geological Survey encourages the use of its material in promoting geological and environmental sciences. The images may be reproduced free of charge for any non-commercial use in any format or medium provided they are reproduced accurately and not used in a misleading or derogatory context. Where any images on this site are being republished or copied to others, the source of the material must be identified and the copyright status acknowledged. The permission to reproduce NERC protected material does not extend to any images on this site which are identified as being the copyright of a third party. Authorisation to reproduce such material must be obtained from the copyright holders concerned.

### Non-commercial Use

Use of the images downloaded from this site and reproduced digitally or otherwise may only be used for non-commercial purposes, which are:-

- Private study or research for a non-commercial purpose
- Education - for teaching, preparation and examination purposes

When using the images please credit 'British Geological Survey' and include the catalogue reference ('P Number') of the item to allow others to access the original image or document. Non-commercial users of the images from this site are restricted to downloading no more than 30 images, without seeking further permission from [enquiries@bgs.ac.uk](mailto:enquiries@bgs.ac.uk)

### Commercial Use

For commercial use of these images for which higher resolution images are available, individual permissions and/or licences arrangements should be agreed by contacting [enquiries@bgs.ac.uk](mailto:enquiries@bgs.ac.uk) Commercial use will include publications in books (including educational books), newspapers, journals, magazines, CDs and DVDs, etc, where a cover charge is applied; broadcasts on TV, film and theatre; and display in trade fairs, galleries, etc. If you are in doubt as to whether your intended use is commercial, please contact [enquiries@bgs.ac.uk](mailto:enquiries@bgs.ac.uk)

### Warranty

Use of the images downloaded from this site is at the users own risk. NERC gives no warranty as to the quality of the images or the medium on which they are provided or their suitability for any use.

### Ordnance Survey topography

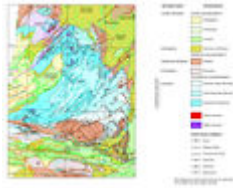
Maps and diagrams in Earthwise use topography based on Ordnance Survey mapping. The National Grid and other Ordnance Survey data ©Crown Copyright and database rights 2015. Ordnance Survey Licence No. 100021290 EUL.

## File history

Click on a date/time to view the file as it appeared at that time.

Date/Time	Thumbnail	Dimensions	User	Comment
-----------	-----------	------------	------	---------

current [18:32, 14 April 2016](#)



1,400 × 1,103  
(698 KB)

[Scotfot](#)  
([talk](#) | [contribs](#))

Tectonic map of Wales —  
key opposite (adapted  
from BGS, 1996). BD  
Berwyn Dome; BF Bala  
Fault; CSF Church  
Stretton Fault; CVF  
Conwy Valley Fault; CWS  
Central Wales Syncline;  
DS Dolwyddelan  
Syncline; HD Harlech  
Dome; LS Llyn Syncline;  
LsS Llanystumdwy...

- You cannot overwrite this file.

## File usage

The following 4 pages link to this file:

- [Caledonian orogeny, Silurian, Wales](#)
- [Namurian, Silesian, Carboniferous, Wales](#)
- [Variscan orogeny, late Carboniferous, Wales](#)
- [Westphalian, Silesian, Carboniferous, Wales](#)

## Metadata

This file contains additional information, probably added from the digital camera or scanner used to create or digitise it.

If the file has been modified from its original state, some details may not fully reflect the modified file.

<b>Unique ID of original document</b>	adobe:docid:photoshop:69f74fb0-8c0d-11e4-a639-ab2f6d0334ef
<b>File change date and time</b>	20:31, 14 April 2016
<b>Software used</b>	Adobe Photoshop CS5 Windows
<b>Date and time of digitising</b>	11:00, 13 April 2016
<b>Date metadata was last modified</b>	20:31, 14 April 2016
<b>Copyright status</b>	Copyright status not set

Retrieved from '<http://earthwise.bgs.ac.uk/index.php?title=File:P916176.jpg&oldid=27468>'

**Category:**

- [License tags](#)

## Navigation menu

## Personal tools

- Not logged in
- [Talk](#)
- [Contributions](#)
- [Log in](#)
- [Request account](#)

## Namespaces

- [File](#)
- [Discussion](#)

## Variants

## Views

- [Read](#)
- [Edit](#)
- [View history](#)
- [PDF Export](#)

## More

## Search

## Navigation

- [Main page](#)
- [Recent changes](#)
- [Random page](#)
- [Help about MediaWiki](#)

## Tools

- [What links here](#)
- [Related changes](#)
- [Special pages](#)
- [Permanent link](#)
- [Page information](#)
- [Browse properties](#)

- This page was last modified on 14 April 2016, at 18:32.

- [Privacy policy](#)
- [About Earthwise](#)
- [Disclaimers](#)

