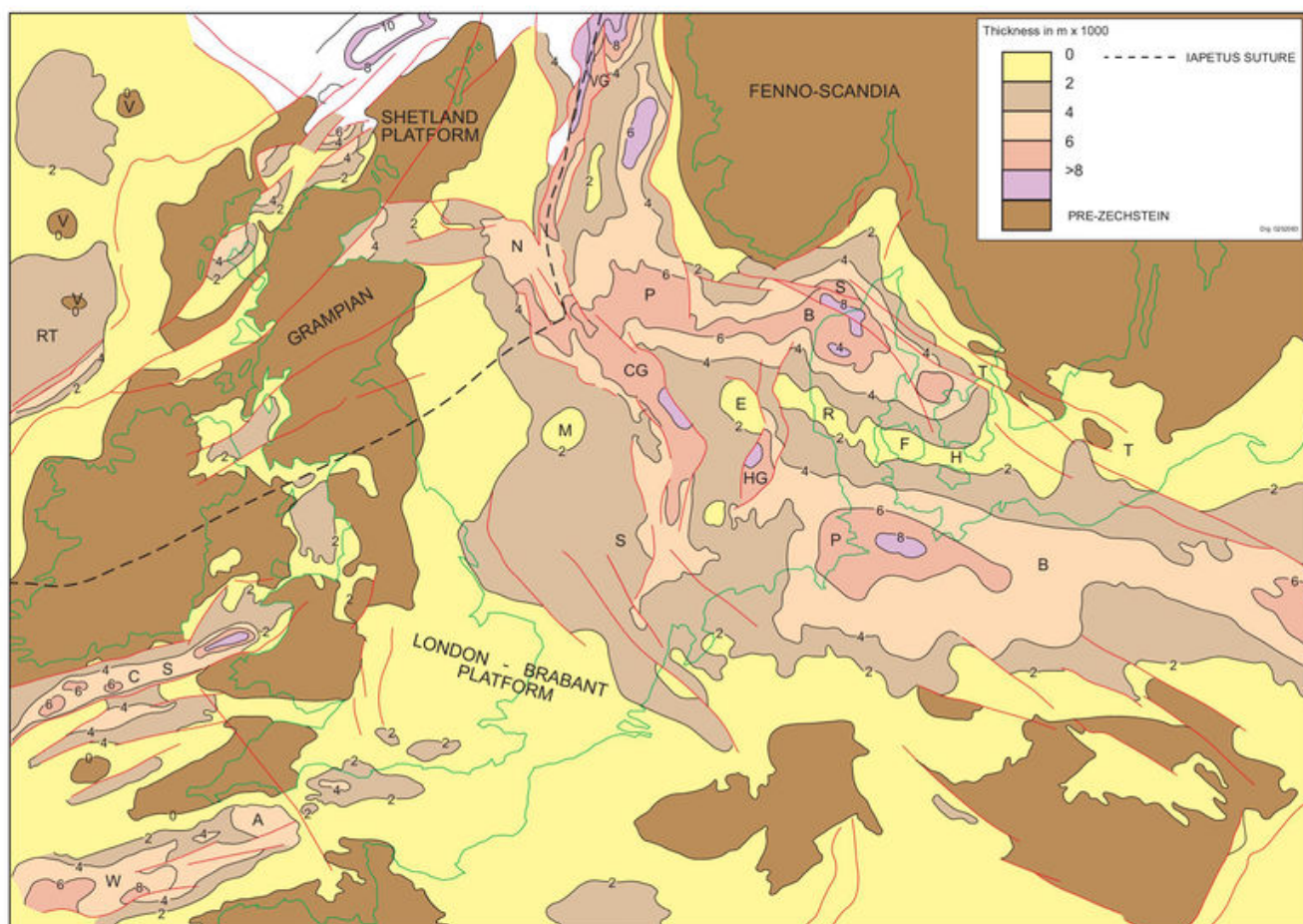


File:YGS CHR 01 REGI FIG 08.jpg

From Earthwise

[Jump to navigation](#) [Jump to search](#)

- [File](#)
- [File history](#)
- [File usage](#)
- [Metadata](#)



Size of this preview: [800 × 566 pixels](#). Other resolutions: [320 × 227 pixels](#) | [2,874 × 2,035 pixels](#).

[Original file](#) (2,874 × 2,035 pixels, file size: 1.31 MB, MIME type: image/jpeg)

Summary

description	<p>English: Figure 8 An isopach map of post-Rotliegend strata. Coals generate gas when they are buried to nearly 3000 m and are affected by the associated rise in temperature. At a depth of about 6km (180°C) coals are post-mature for gas generation. Between these ranges it is important to know the likely burial history of the coals. The greatest depths of 8km or more are achieved in parts of the Viking and Central grabens, along the Tornquist-Teisseyre zone of shearing and in the central part of the Southern Permian Basin. Deep troughs also occur locally in the Western Approaches and in the Celtic Sea. CG Central Graben, E East Mid North Sea High, CS Celtic Sea, HG Horn Graben, M Mid North Sea High, NPB Northern Permian Basin, RFH Ringkøbing-Fyn High, RT Rockall Trough, SPB Southern Permian Basin, STT Sorgenfrei-Tornquist-Teisseyre Zone, V oceanic volcano, VG Viking Graben, WA Western Approaches Basin. Modified from Ziegler (1990).</p> <p>From: Carboniferous hydrocarbon resources: the southern North Sea and surrounding onshore areas, edited by J. D. Collinson, D. J. Evans, D. W. Holliday, N. S. Jones. Published as volume 7 in the Occasional Publications series of the Yorkshire Geological Society, © Yorkshire Geological Society 2005.</p>
source	Yorkshire Geological Society
author	K. W. Glennie

Licencing

{{subst:Custom license marker added by UW}}

Copyright for images in Yorkshire Geological Society publications on Earthwise is as follows:

Images may be reproduced free of charge for any non-commercial use in any format or medium provided it is reproduced accurately and not used in a misleading or derogatory context. Where any images on this site are being republished or copied to others, the source of the material must be identified and the copyright status acknowledged with the relevant attribution.

For all other uses of the images including commercial use please contact the Yorkshire Geological Society

Further copyright information for images from specific books and attribution statements: Yorkshire rocks and landscape

Images are Copyright Yorkshire Geological Society.

Attribution statement: Image from 'Yorkshire rocks and landscape: a field guide.' Yorkshire Geological Society 2006. www.yorksgeolsoc.org.uk

Northumbrian rocks and landscape

Images are Copyright Karen Atkinson and Colin Scrutton.

Attribution statement: Image from 'Northumbrian rocks and landscape: a field guide.' Yorkshire Geological Society 2004. www.yorksgeolsoc.org.uk

Carboniferous hydrocarbon resources: the southern North Sea and surrounding onshore areas

Images are Copyright Yorkshire Geological Society.

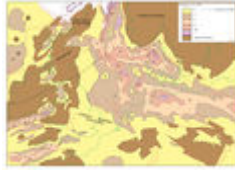
Attribution statement: Image from 'Carboniferous hydrocarbon geology.' Yorkshire Geological Society 2005. www.yorksgeolsoc.org.uk

File history

Click on a date/time to view the file as it appeared at that time.

Date/Time	Thumbnail	Dimensions	User	Comment
-----------	-----------	------------	------	---------

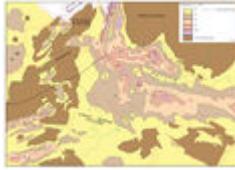
current [20:16, 17 August 2019](#)



2,874 × 2,035
(1.31 MB)

[Scotfot \(talk | contribs\)](#)

[12:49, 27 July 2019](#)



2,136 × 1,520
(941 KB)

[Scotfot \(talk | contribs\)](#)

User created page with UploadWizard

- You cannot overwrite this file.

File usage

The following page links to this file:

- [Regional tectonics in relation to Permo-Carboniferous hydrocarbon potential, Southern North Sea Basin](#)

Metadata

This file contains additional information, probably added from the digital camera or scanner used to create or digitise it.

If the file has been modified from its original state, some details may not fully reflect the modified file.

Unique ID of original document 4834CEA7BFADE34E6C9427521E88641D

Date and time of digitising 17:39, 7 August 2019

File change date and time 21:51, 17 August 2019

Date metadata was last modified 21:51, 17 August 2019

IIM version 50,920

Retrieved from

'http://earthwise.bgs.ac.uk/index.php?title=File:YGS_CHR_01_REGI_FIG_08.jpg&oldid=42230'

Categories:

- [License tags](#)
- [Uploaded with UploadWizard](#)

Navigation menu

Personal tools

- Not logged in
- [Talk](#)
- [Contributions](#)
- [Log in](#)

- [Request account](#)

Namespaces

- [File](#)
- [Discussion](#)

Variants

Views

- [Read](#)
- [Edit](#)
- [View history](#)
- [PDF Export](#)

More

Search

Navigation

- [Main page](#)
- [Recent changes](#)
- [Random page](#)
- [Help about MediaWiki](#)

Tools

- [What links here](#)
- [Related changes](#)
- [Special pages](#)
- [Permanent link](#)
- [Page information](#)
- [Browse properties](#)

• This page was last modified on 17 August 2019, at 20:16.

- [Privacy policy](#)
- [About Earthwise](#)
- [Disclaimers](#)

