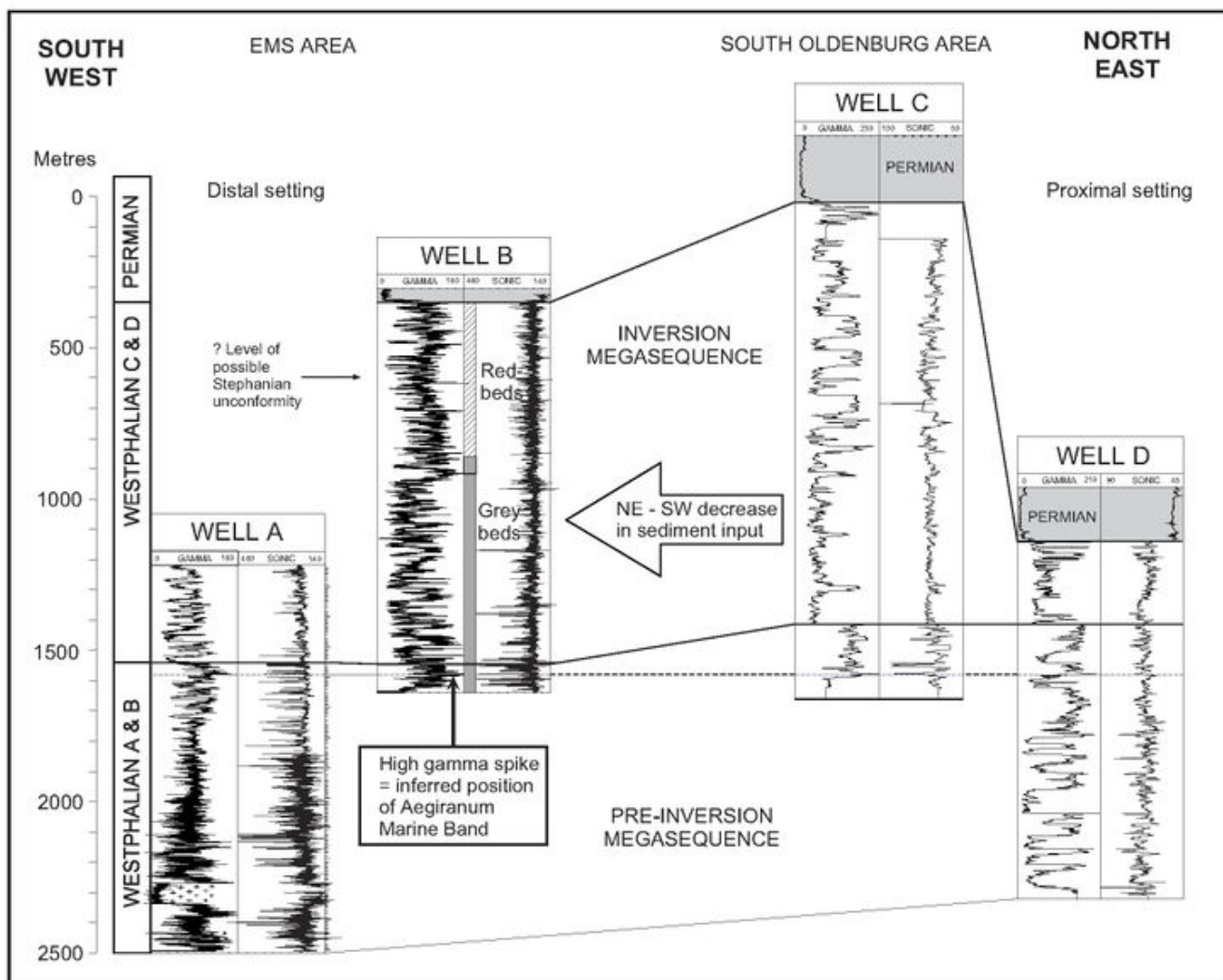


File:YGS CHR 05 FLUV FIG 07.jpg

From Earthwise

[Jump to navigation](#) [Jump to search](#)

- [File](#)
- [File history](#)
- [File usage](#)



Size of this preview: [746 × 600 pixels](#). Other resolutions: [299 × 240 pixels](#) | [2,140 × 1,720 pixels](#).

[Original file](#) (2,140 × 1,720 pixels, file size: 503 KB, MIME type: image/jpeg)

Summary

| | |
|--------------------|--|
| description | <p>English: Figure 7 Northeast-southwest log correlation to show variations in the quantity of sand deposited in the basin prior to (pre-inversion megasequence) and after (inversion megasequence) Variscan activity began to affect the basin. Although there is a clear vertical, stratigraphical variation in the amount of sand, a proximalto- distal difference can also be demonstrated. Well locations are marked on Figure 1. Approximate distance between well A and well D is 150km.</p> <p>From: Carboniferous hydrocarbon resources: the southern North Sea and surrounding onshore areas, edited by J. D. Collinson, D. J. Evans, D. W. Holliday, N. S. Jones. Published as volume 7 in the Occasional Publications series of the Yorkshire Geological Society , Copyright Yorkshire Geological Society 2005.</p> |
| source | Yorkshire Geological Society |
| author | Neil S. Jones & Brian W. Glover |

Licencing

{{subst:Custom license marker added by UW}}

Copyright for images in Yorkshire Geological Society publications on Earthwise is as follows:

Images may be reproduced free of charge for any non-commercial use in any format or medium provided it is reproduced accurately and not used in a misleading or derogatory context. Where any images on this site are being republished or copied to others, the source of the material must be identified and the copyright status acknowledged with the relevant attribution.

For all other uses of the images including commercial use please contact the Yorkshire Geological Society

Further copyright information for images from specific books and attribution statements: Yorkshire rocks and landscape

Images are Copyright Yorkshire Geological Society.

Attribution statement: Image from 'Yorkshire rocks and landscape: a field guide.' Yorkshire Geological Society 2006. www.yorksgeolsoc.org.uk

Northumbrian rocks and landscape

Images are Copyright Karen Atkinson and Colin Scrutton.

Attribution statement: Image from 'Northumbrian rocks and landscape: a field guide.' Yorkshire Geological Society 2004. www.yorksgeolsoc.org.uk

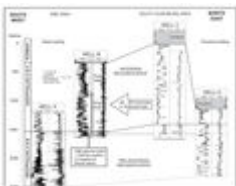
Carboniferous hydrocarbon resources: the southern North Sea and surrounding onshore areas

Images are Copyright Yorkshire Geological Society.

Attribution statement: Image from 'Carboniferous hydrocarbon geology.' Yorkshire Geological Society 2005. www.yorksgeolsoc.org.uk

File history

Click on a date/time to view the file as it appeared at that time.

| Date/Time | Thumbnail | Dimensions | User | Comment |
|---|---|------------------------|---|-------------------------------------|
| current 14:43, 16 August 2019 |  | 2,140 × 1,720 (503 KB) | Scotfot (talk contribs) | User created page with UploadWizard |

- You cannot overwrite this file.

File usage

The following page links to this file:

- [Fluvial sandbody architecture, cyclicity and sequence stratigraphic setting - implications for hydrocarbon reservoirs: the Westphalian C and D of the Osnabrück-Ibbenbüren area, northwest Germany](#)

Retrieved from

'http://earthwise.bgs.ac.uk/index.php?title=File:YGS_CHR_05_FLUV_FIG_07.jpg&oldid=42201'

Categories:

- [License tags](#)
- [Uploaded with UploadWizard](#)

Navigation menu

Personal tools

- Not logged in
- [Talk](#)
- [Contributions](#)
- [Log in](#)
- [Request account](#)

Namespaces

- [File](#)
- [Discussion](#)

Variants

Views

- [Read](#)
- [Edit](#)
- [View history](#)
- [PDF Export](#)

More

Search

Navigation

- [Main page](#)
- [Recent changes](#)
- [Random page](#)
- [Help about MediaWiki](#)

Tools

- [What links here](#)
- [Related changes](#)
- [Special pages](#)
- [Permanent link](#)
- [Page information](#)
- [Browse properties](#)

• This page was last modified on 16 August 2019, at 14:43.

- [Privacy policy](#)
- [About Earthwise](#)
- [Disclaimers](#)

