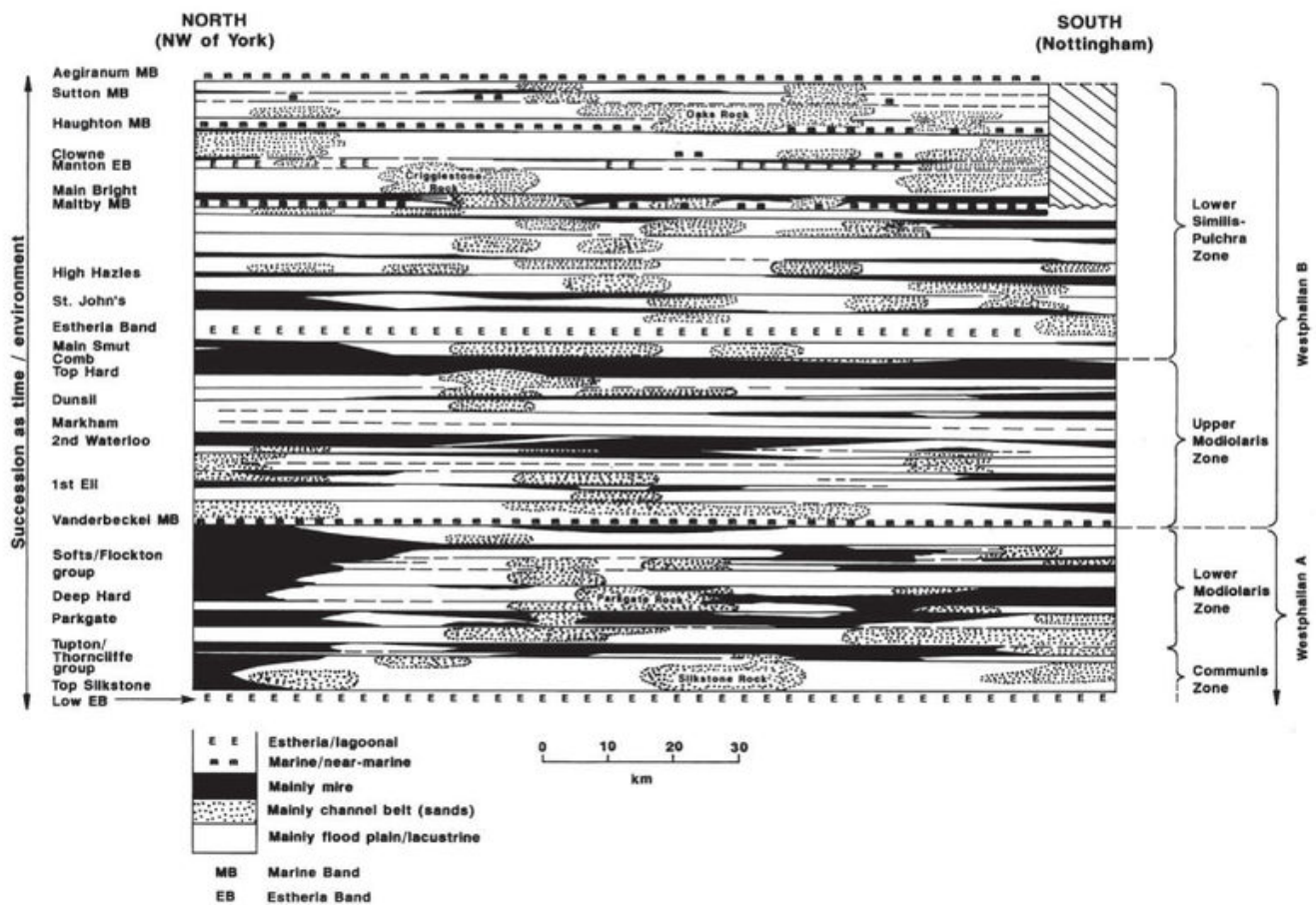


File:YGS CHR 07 WEST FIG 03.jpg

From Earthwise

[Jump to navigation](#) [Jump to search](#)

- [File](#)
- [File history](#)
- [File usage](#)
- [Metadata](#)



Size of this preview: [800 × 562 pixels](#). Other resolutions: [320 × 225 pixels](#) | [3,972 × 2,790 pixels](#).

[Original file](#) (3,972 × 2,790 pixels, file size: 1.84 MB, MIME type: image/jpeg)

Summary

| | |
|--------------------|--|
| description | <p>English: Figure 3 Variations in mid-Westphalian A to top Westphalian B palaeoenvironments, north-south through eastings 450-460. The vertical axis is the geological succession normalized for regional thickness variations to give a time-equivalent display (see main text): therefore, there is no vertical exaggeration. The horizontal axis is a north-south section through the succession; see Figure 5 for location. The suppression of actual thickness variations allows a more ready assessment of the spatial variations in time-equivalent environments. Note: the unions of coals towards an inferred basin margin northwest of York; the importance of the Top Hard seam group; the general lateral continuity of the named coals; and the persistence of channel belts, evidenced by significant fluvial sandstones, throughout most of the succession. All the named seams are considered to demonstrate some base-level control on their stratigraphical incidence, although their detailed thickness variations and coal types will reflect local control, such as the presence of preceding topographic highs.</p> <p>From: Carboniferous hydrocarbon resources: the southern North Sea and surrounding onshore areas, edited by J. D. Collinson, D. J. Evans, D. W. Holliday, N. S. Jones. Published as volume 7 in the Occasional Publications series of the Yorkshire Geological Society, Copyright Yorkshire Geological Society 2005.</p> |
| source | Yorkshire Geological Society |
| author | J. H. Rippon |

Licensing

{{subst:Custom license marker added by UW}}

Copyright for images in Yorkshire Geological Society publications on Earthwise is as follows:

Images may be reproduced free of charge for any non-commercial use in any format or medium provided it is reproduced accurately and not used in a misleading or derogatory context. Where any images on this site are being republished or copied to others, the source of the material must be identified and the copyright status acknowledged with the relevant attribution.

For all other uses of the images including commercial use please contact the Yorkshire Geological Society

Further copyright information for images from specific books and attribution statements: Yorkshire rocks and landscape

Images are Copyright Yorkshire Geological Society.

Attribution statement: Image from 'Yorkshire rocks and landscape: a field guide.' Yorkshire Geological Society 2006. www.yorksgeolsoc.org.uk

Northumbrian rocks and landscape

Images are Copyright Karen Atkinson and Colin Scrutton.

Attribution statement: Image from 'Northumbrian rocks and landscape: a field guide.' Yorkshire Geological Society 2004. www.yorksgeolsoc.org.uk


Carboniferous hydrocarbon resources: the southern North Sea and surrounding onshore areas

Images are Copyright Yorkshire Geological Society.

Attribution statement: Image from 'Carboniferous hydrocarbon geology.' Yorkshire Geological Society 2005. www.yorksgeolsoc.org.uk

File history

Click on a date/time to view the file as it appeared at that time.

| Date/Time | Thumbnail | Dimensions | User | Comment |
|---|---|----------------------------|---|-------------------------------------|
| current 18:03, 11 August 2019 |  | 3,972 × 2,790 (1.84 MB) | Scotfot (talk contribs) | User created page with UploadWizard |

- You cannot overwrite this file.

File usage

The following page links to this file:

- [Westphalian mid-A to mid-C depositional controls, UK Pennine Basin: regional analyses and their relevance to southern North Sea interpretations](#)

Metadata

This file contains additional information, probably added from the digital camera or scanner used to create or digitise it.

If the file has been modified from its original state, some details may not fully reflect the modified file.

| | |
|--|----------------------------------|
| Unique ID of original document | B687A057C12150AA91C3A2A75464CF13 |
| Date and time of digitising | 17:43, 7 August 2019 |
| File change date and time | 19:56, 11 August 2019 |
| Date metadata was last modified | 19:56, 11 August 2019 |
| IIM version | 65,240 |

Retrieved from

'http://earthwise.bgs.ac.uk/index.php?title=File:YGS_CHR_07_WEST_FIG_03.jpg&oldid=42011'

Categories:

- [License tags](#)
- [Uploaded with UploadWizard](#)

Navigation menu

Personal tools

- Not logged in
- [Talk](#)
- [Contributions](#)
- [Log in](#)
- [Request account](#)

Namespaces

- [File](#)
- [Discussion](#)

Variants

Views

- [Read](#)
- [Edit](#)
- [View history](#)
- [PDF Export](#)

More

Search

Navigation

- [Main page](#)
- [Recent changes](#)
- [Random page](#)
- [Help about MediaWiki](#)

Tools

- [What links here](#)
- [Related changes](#)
- [Special pages](#)
- [Permanent link](#)
- [Page information](#)
- [Browse properties](#)

• This page was last modified on 11 August 2019, at 18:03.

- [Privacy policy](#)
- [About Earthwise](#)
- [Disclaimers](#)

•



•

