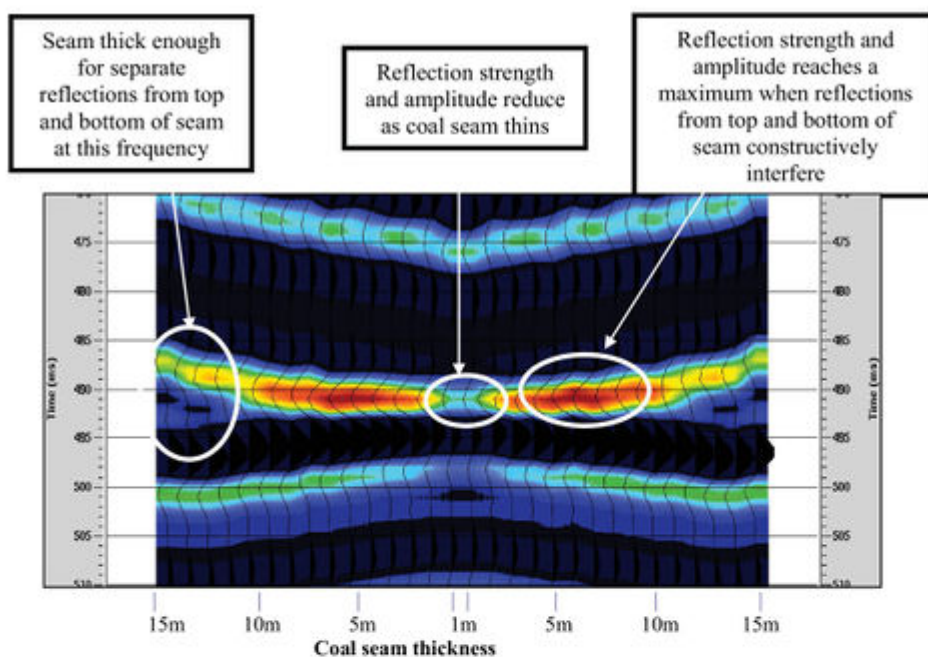


# File:YGS CHR 08 IMAG FIG 05.jpg

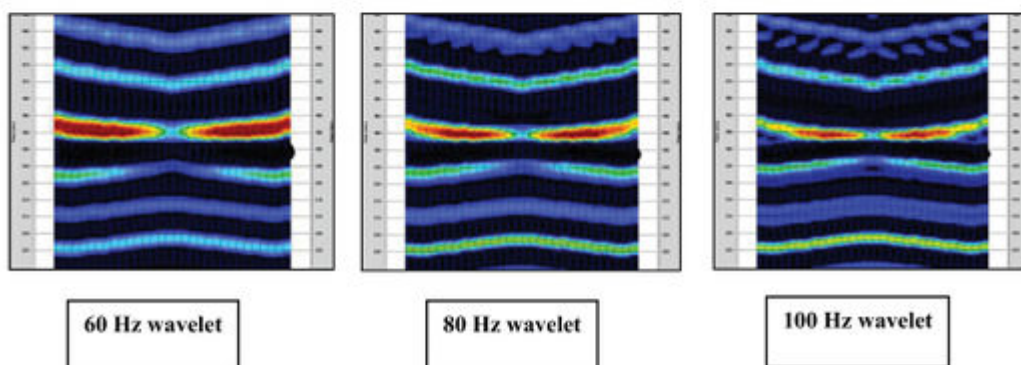
From Earthwise

[Jump to navigation](#) [Jump to search](#)

- [File](#)
- [File history](#)
- [File usage](#)
- [Metadata](#)



a)



b)

Size of this preview: [552 × 599 pixels](#). Other resolutions: [221 × 240 pixels](#) | [2,730 × 2,964 pixels](#).

[Original file](#) (2,730 × 2,964 pixels, file size: 1.36 MB, MIME type: image/jpeg)

## Summary

<b>description</b>	<p><b>English:</b> Figure 5 Synthetic models of coal seam thicknesses. (a) Synthetic model showing the relationship between reflection strength, amplitude and seam thickness. The density model has been convolved with a 100Hz Ricker wavelet. (b) The same model as part (a), recalculated with 60Hz, 80Hz and 100Hz wavelet. Note how the area of maximum amplitude is broader on the lower frequency plots. The lateral resolution as well as the vertical resolution therefore reduces as the frequency is lowered.</p> <p>From: <a href="#">Carboniferous hydrocarbon resources: the southern North Sea and surrounding onshore areas</a>, edited by J. D. Collinson, D. J. Evans, D. W. Holliday, N. S. Jones. Published as volume 7 in the Occasional Publications series of the <a href="#">Yorkshire Geological Society</a>, Copyright <a href="#">Yorkshire Geological Society</a> 2005.</p>
<b>source</b>	Yorkshire Geological Society
<b>author</b>	B.A. McGlen and J.H. Rippon

## Licencing

{{subst:Custom license marker added by UW}}

### Copyright for images in Yorkshire Geological Society publications on Earthwise is as follows:

Images may be reproduced free of charge for any non-commercial use in any format or medium provided it is reproduced accurately and not used in a misleading or derogatory context. Where any images on this site are being republished or copied to others, the source of the material must be identified and the copyright status acknowledged with the relevant attribution.

For all other uses of the images including commercial use please contact the Yorkshire Geological Society

### Further copyright information for images from specific books and attribution statements: Yorkshire rocks and landscape

Images are Copyright Yorkshire Geological Society.

Attribution statement: Image from 'Yorkshire rocks and landscape: a field guide.' Yorkshire Geological Society 2006. [www.yorksgeolsoc.org.uk](http://www.yorksgeolsoc.org.uk)

### Northumbrian rocks and landscape

Images are Copyright Karen Atkinson and Colin Scrutton.

Attribution statement: Image from 'Northumbrian rocks and landscape: a field guide.' Yorkshire Geological Society 2004. [www.yorksgeolsoc.org.uk](http://www.yorksgeolsoc.org.uk)

Carboniferous hydrocarbon resources: the southern North Sea and surrounding onshore areas

Images are Copyright Yorkshire Geological Society.

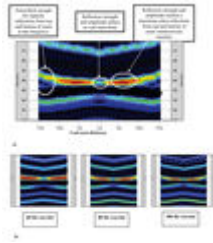
Attribution statement: Image from 'Carboniferous hydrocarbon geology.' Yorkshire Geological Society 2005. [www.yorksgeolsoc.org.uk](http://www.yorksgeolsoc.org.uk)

## File history

Click on a date/time to view the file as it appeared at that time.

Date/Time	Thumbnail	Dimensions	User	Comment
-----------	-----------	------------	------	---------

current [18:42, 11 August 2019](#)



2,730 × 2,964  
(1.36 MB)

[Scotfot \(talk | contribs\)](#)

User created page with UploadWizard

- You cannot overwrite this file.

## File usage

The following page links to this file:

- [Imaging coals with seismic reflection data for improved detection of sandstone bodies](#)

## Metadata

This file contains additional information, probably added from the digital camera or scanner used to create or digitise it.

If the file has been modified from its original state, some details may not fully reflect the modified file.

<b>Unique ID of original document</b>	797E1B0A24599CA46DC8E5837F67D6F3
<b>Date and time of digitising</b>	17:44, 7 August 2019
<b>File change date and time</b>	20:28, 11 August 2019
<b>Date metadata was last modified</b>	20:28, 11 August 2019
<b>IIM version</b>	65,240

Retrieved from

'[http://earthwise.bgs.ac.uk/index.php?title=File:YGS\\_CHR\\_08\\_IMAG\\_FIG\\_05.jpg&oldid=42025](http://earthwise.bgs.ac.uk/index.php?title=File:YGS_CHR_08_IMAG_FIG_05.jpg&oldid=42025)'

**Categories:**

- [License tags](#)
- [Uploaded with UploadWizard](#)

## Navigation menu

### Personal tools

- Not logged in
- [Talk](#)
- [Contributions](#)
- [Log in](#)
- [Request account](#)

## Namespaces

- [File](#)
- [Discussion](#)

## Variants

## Views

- [Read](#)
- [Edit](#)
- [View history](#)
- [PDF Export](#)

## More

## Search

## Navigation

- [Main page](#)
- [Recent changes](#)
- [Random page](#)
- [Help about MediaWiki](#)

## Tools

- [What links here](#)
- [Related changes](#)
- [Special pages](#)
- [Permanent link](#)
- [Page information](#)
- [Browse properties](#)

• This page was last modified on 11 August 2019, at 18:42.

- [Privacy policy](#)
- [About Earthwise](#)
- [Disclaimers](#)

•



•

