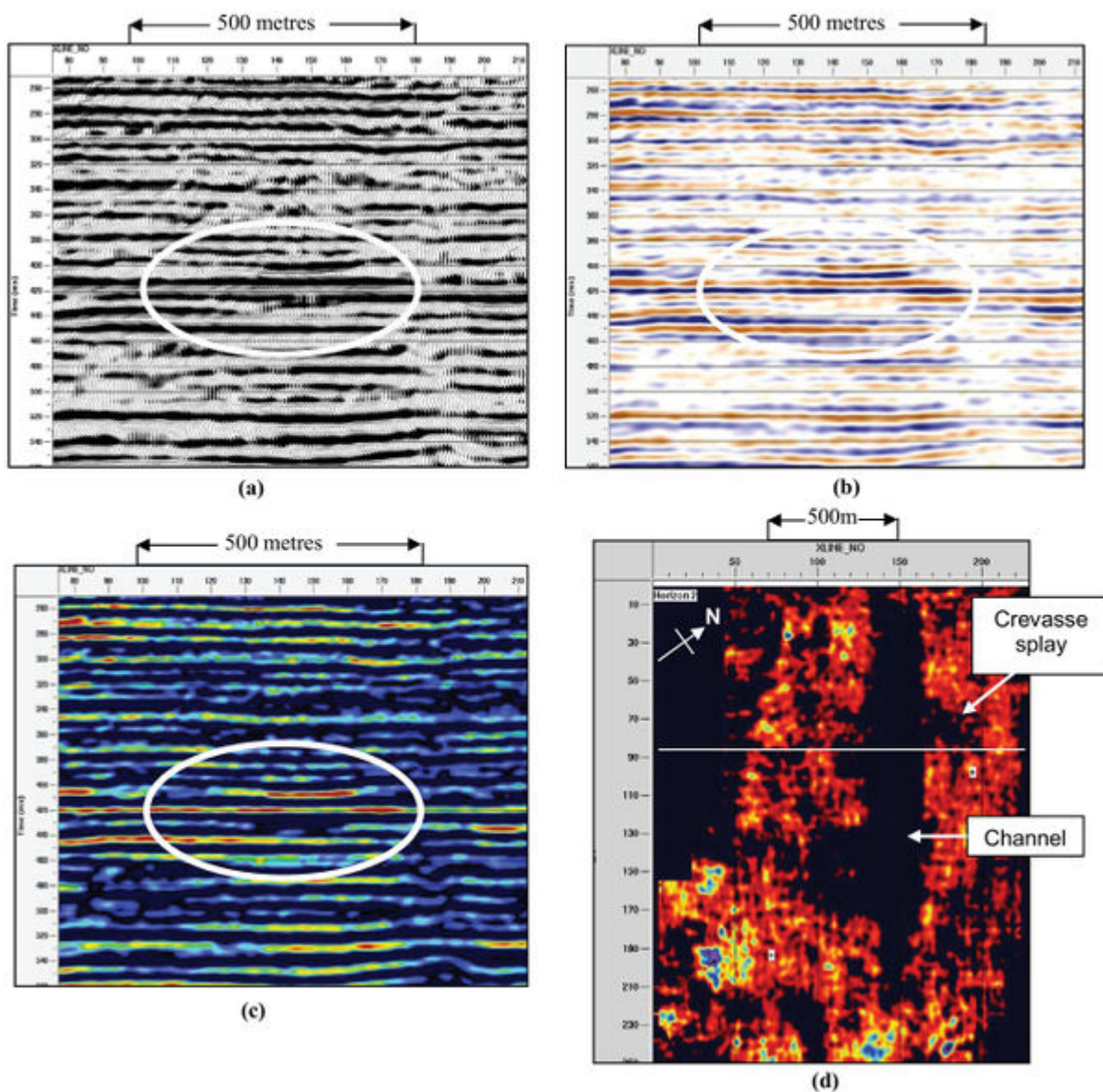


File:YGS CHR 08 IMAG FIG 08.jpg

From Earthwise

[Jump to navigation](#) [Jump to search](#)

- [File](#)
- [File history](#)
- [File usage](#)
- [Metadata](#)



Size of this preview: [628 × 599 pixels](#). Other resolutions: [252 × 240 pixels](#) | [2,748 × 2,622 pixels](#).

[Original file](#) (2,748 × 2,622 pixels, file size: 2.09 MB, MIME type: image/jpeg)

Summary

description	<p>English: Figure 8 The use of varying seismic attribute displays to recognize channel features in the roof of the Top Hard Seam in the Ollerton 3-D seismic case study. (a) Conventional wiggle trace plot. Coal seams tops have a negative reflection coefficient and are therefore shown as troughs. (b) Amplitude plot; negative amplitudes (e.g. coal seam tops) in blue. (c) Reflection strength plot; high reflection strength (e.g. coal seams) in “hot” colours. Note variations in seam thickness evident in colour variations, (d) Time slice showing northwest-southeast-trending channel feature, possibly with crevasse splays. (The position of the in-line in (a-c) is indicated by the white line.)</p> <p>From: Carboniferous hydrocarbon resources: the southern North Sea and surrounding onshore areas, edited by J. D. Collinson, D. J. Evans, D. W. Holliday, N. S. Jones. Published as volume 7 in the Occasional Publications series of the Yorkshire Geological Society, Copyright Yorkshire Geological Society 2005.</p>
source	Yorkshire Geological Society
author	B.A. McGlen and J.H. Rippon

Licensing

{{subst:Custom license marker added by UW}}

Copyright for images in Yorkshire Geological Society publications on Earthwise is as follows:

Images may be reproduced free of charge for any non-commercial use in any format or medium provided it is reproduced accurately and not used in a misleading or derogatory context. Where any images on this site are being republished or copied to others, the source of the material must be identified and the copyright status acknowledged with the relevant attribution.

For all other uses of the images including commercial use please contact the Yorkshire Geological Society

Further copyright information for images from specific books and attribution statements: Yorkshire rocks and landscape

Images are Copyright Yorkshire Geological Society.

Attribution statement: Image from 'Yorkshire rocks and landscape: a field guide.' Yorkshire Geological Society 2006. www.yorksgeolsoc.org.uk

Northumbrian rocks and landscape

Images are Copyright Karen Atkinson and Colin Scrutton.

Attribution statement: Image from 'Northumbrian rocks and landscape: a field guide.' Yorkshire Geological Society 2004. www.yorksgeolsoc.org.uk

Carboniferous hydrocarbon resources: the southern North Sea and surrounding onshore areas
Images are Copyright Yorkshire Geological Society.

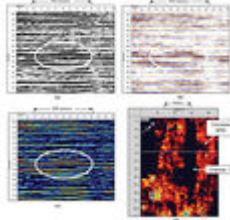
Attribution statement: Image from 'Carboniferous hydrocarbon geology.' Yorkshire Geological Society 2005. www.yorksgeolsoc.org.uk

File history

Click on a date/time to view the file as it appeared at that time.

Date/Time	Thumbnail	Dimensions	User	Comment
-----------	-----------	------------	------	---------

current [19:42, 11 August 2019](#)



2,748 × 2,622
(2.09 MB)

[Scotfot](#) ([talk](#)
| [contribs](#))

User created page
with UploadWizard

- You cannot overwrite this file.

File usage

The following page links to this file:

- [Imaging coals with seismic reflection data for improved detection of sandstone bodies](#)

Metadata

This file contains additional information, probably added from the digital camera or scanner used to create or digitise it.

If the file has been modified from its original state, some details may not fully reflect the modified file.

Unique ID of original document	AAC92983CAFF8D43DC437B7BEA476F68
Date and time of digitising	17:44, 7 August 2019
File change date and time	20:27, 11 August 2019
Date metadata was last modified	20:27, 11 August 2019
IIM version	65,240

Retrieved from

'http://earthwise.bgs.ac.uk/index.php?title=File:YGS_CHR_08_IMAG_FIG_08.jpg&oldid=42028'

[Categories](#):

- [License tags](#)
- [Uploaded with UploadWizard](#)

Navigation menu

Personal tools

- Not logged in
- [Talk](#)
- [Contributions](#)
- [Log in](#)
- [Request account](#)

Namespaces

- [File](#)
- [Discussion](#)

Variants

Views

- [Read](#)
- [Edit](#)
- [View history](#)
- [PDF Export](#)

More

Search

Navigation

- [Main page](#)
- [Recent changes](#)
- [Random page](#)
- [Help about MediaWiki](#)

Tools

- [What links here](#)
- [Related changes](#)
- [Special pages](#)
- [Permanent link](#)
- [Page information](#)
- [Browse properties](#)

• This page was last modified on 11 August 2019, at 19:42.

- [Privacy policy](#)
- [About Earthwise](#)
- [Disclaimers](#)

•



•

