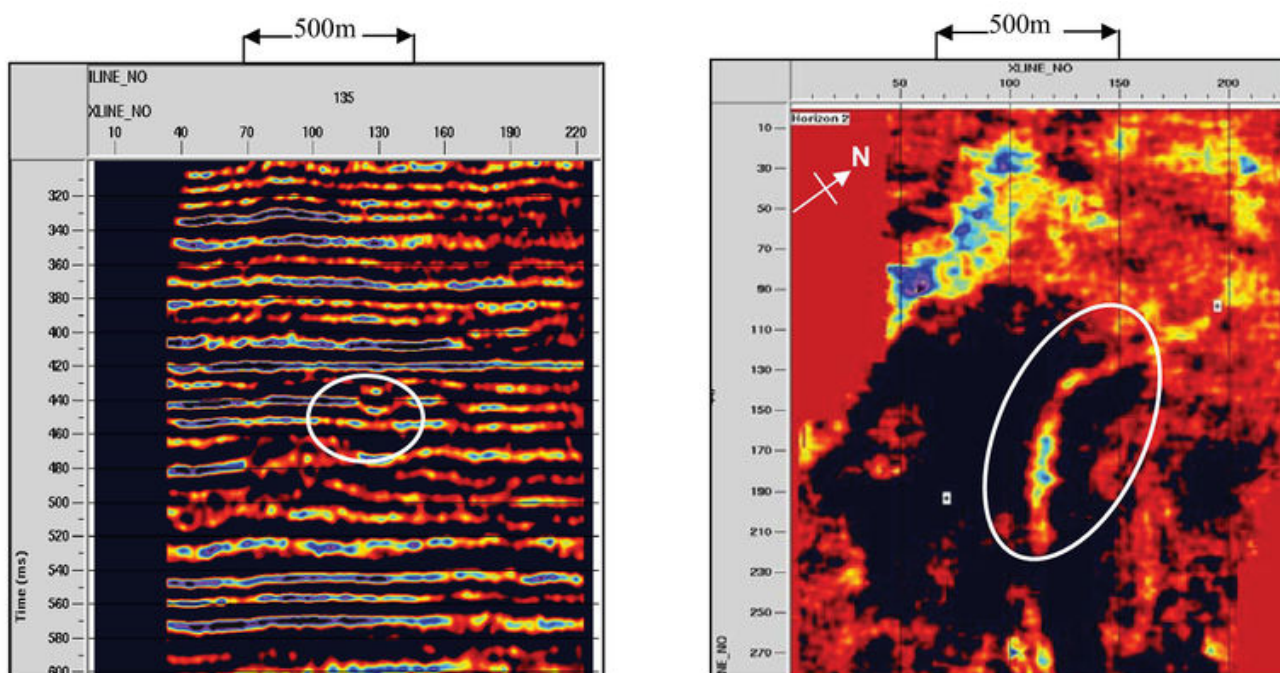


File:YGS CHR 08 IMAG FIG 10.jpg

From Earthwise

[Jump to navigation](#) [Jump to search](#)

- [File](#)
- [File history](#)
- [File usage](#)
- [Metadata](#)



Size of this preview: [800 × 417 pixels](#). Other resolutions: [320 × 167 pixels](#) | [2,604 × 1,357 pixels](#).

[Original file](#) (2,604 × 1,357 pixels, file size: 977 KB, MIME type: image/jpeg)

Summary

description

English: Figure 10 Feature visible at Dunsil Seam horizon in the Ollerton study area. Seam disturbance apparent on in-lines appears as a strong linear event on the flattened time slice. This structure is approximately 120m wide. Its arcuate shape and narrow width are typical of channel bank collapse structures seen in mine workings.

From: [Carboniferous hydrocarbon resources: the southern North Sea and surrounding onshore areas](#), edited by J. D. Collinson, D. J. Evans, D. W. Holliday, N. S. Jones. Published as volume 7 in the Occasional Publications series of the [Yorkshire Geological Society](#), Copyright [Yorkshire Geological Society](#) 2005.

source Yorkshire Geological Society

author B.A. McGlen and J.H. Rippon

Licencing

{{subst:Custom license marker added by UW}}

Copyright for images in Yorkshire Geological Society publications on Earthwise is as follows:

Images may be reproduced free of charge for any non-commercial use in any format or medium provided it is reproduced accurately and not used in a misleading or derogatory context. Where any images on this site are being republished or copied to others, the source of the material must be identified and the copyright status acknowledged with the relevant attribution.

For all other uses of the images including commercial use please contact the Yorkshire Geological Society

Further copyright information for images from specific books and attribution statements: Yorkshire rocks and landscape

Images are Copyright Yorkshire Geological Society.

Attribution statement: Image from 'Yorkshire rocks and landscape: a field guide.' Yorkshire Geological Society 2006. www.yorksgeolsoc.org.uk

Northumbrian rocks and landscape

Images are Copyright Karen Atkinson and Colin Scrutton.

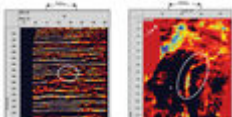
Attribution statement: Image from 'Northumbrian rocks and landscape: a field guide.' Yorkshire Geological Society 2004. www.yorksgeolsoc.org.uk

Carboniferous hydrocarbon resources: the southern North Sea and surrounding onshore areas
Images are Copyright Yorkshire Geological Society.

Attribution statement: Image from 'Carboniferous hydrocarbon geology.' Yorkshire Geological Society 2005. www.yorksgeolsoc.org.uk

File history

Click on a date/time to view the file as it appeared at that time.

Date/Time	Thumbnail	Dimensions	User	Comment
current 19:43, 11 August 2019		2,604 × 1,357 (977 KB)	Scotfot (talk contribs)	User created page with UploadWizard

- You cannot overwrite this file.

File usage

The following page links to this file:

- [Imaging coals with seismic reflection data for improved detection of sandstone bodies](#)

Metadata

This file contains additional information, probably added from the digital camera or scanner used to create or digitise it.

If the file has been modified from its original state, some details may not fully reflect the modified

file.

Unique ID of original document D138319C1723C8DF91388804FA05CB80
Date and time of digitising 17:44, 7 August 2019
File change date and time 20:26, 11 August 2019
Date metadata was last modified 20:26, 11 August 2019
IIM version 65,240

Retrieved from

'http://earthwise.bgs.ac.uk/index.php?title=File:YGS_CHR_08_IMAG_FIG_10.jpg&oldid=42030'

Categories:

- [License tags](#)
- [Uploaded with UploadWizard](#)

Navigation menu

Personal tools

- Not logged in
- [Talk](#)
- [Contributions](#)
- [Log in](#)
- [Request account](#)

Namespaces

- [File](#)
- [Discussion](#)

Variants

Views

- [Read](#)
- [Edit](#)
- [View history](#)
- [PDF Export](#)

More

Search

Navigation

- [Main page](#)
- [Recent changes](#)
- [Random page](#)
- [Help about MediaWiki](#)

Tools

- [What links here](#)
- [Related changes](#)
- [Special pages](#)
- [Permanent link](#)
- [Page information](#)
- [Browse properties](#)

• This page was last modified on 11 August 2019, at 19:43.

- [Privacy policy](#)
- [About Earthwise](#)
- [Disclaimers](#)

