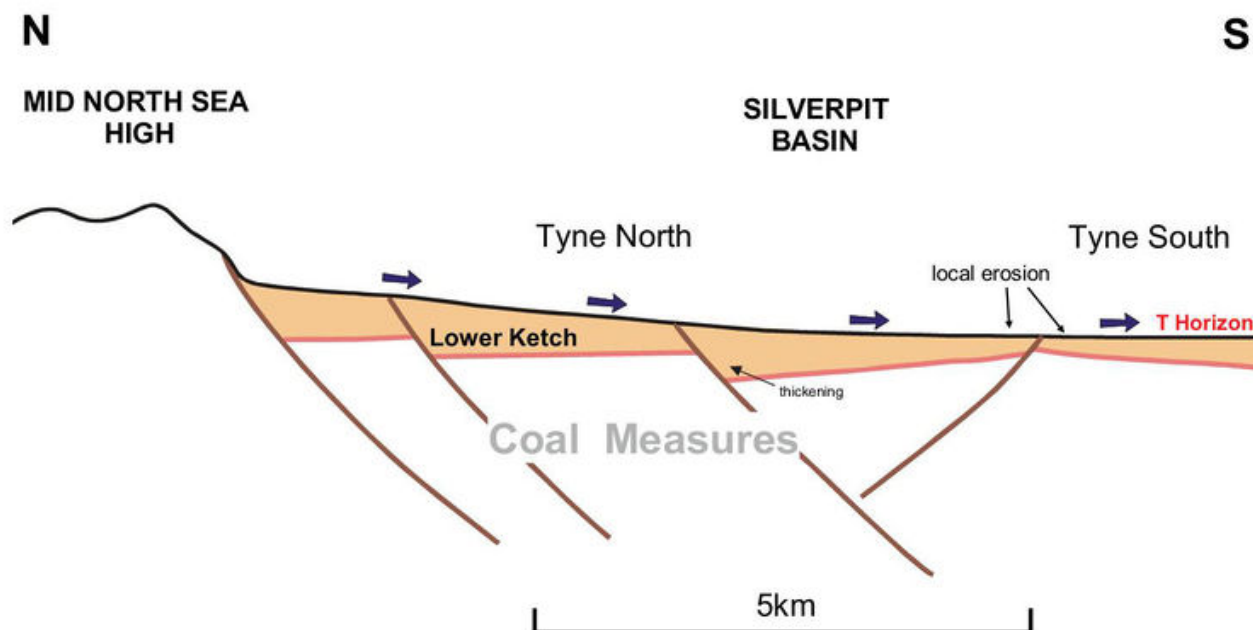


File:YGS CHR 12 GEOL FIG 09.jpg

From Earthwise

[Jump to navigation](#) [Jump to search](#)

- [File](#)
- [File history](#)
- [File usage](#)
- [Metadata](#)



Size of this preview: [800 × 402 pixels](#). Other resolutions: [320 × 161 pixels](#) | [1,458 × 733 pixels](#).

[Original file](#) (1,458 × 733 pixels, file size: 118 KB, MIME type: image/jpeg)

Summary

description	<p>English: Figure 9 Simplified north-south cross section showing conceptual sedimentation in the Lower Ketch in relation to extensional faulting.</p> <p>From: Carboniferous hydrocarbon resources: the southern North Sea and surrounding onshore areas, edited by J. D. Collinson, D. J. Evans, D. W. Holliday, N. S. Jones. Published as volume 7 in the Occasional Publications series of the Yorkshire Geological Society, Copyright Yorkshire Geological Society 2005.</p>
source	Yorkshire Geological Society
author	Colin M. Jones, Philip. J. Allen, Neville H. Morrison

Licencing

{{subst:Custom license marker added by UW}}

Copyright for images in Yorkshire Geological Society publications on Earthwise is as follows:

Images may be reproduced free of charge for any non-commercial use in any format or medium provided it is reproduced accurately and not used in a misleading or derogatory context. Where any images on this site are being republished or copied to others, the source of the material must be identified and the copyright status acknowledged with the relevant attribution.

For all other uses of the images including commercial use please contact the Yorkshire Geological Society

Further copyright information for images from specific books and attribution statements: Yorkshire rocks and landscape

Images are Copyright Yorkshire Geological Society.

Attribution statement: Image from 'Yorkshire rocks and landscape: a field guide.' Yorkshire Geological Society 2006. www.yorksgeolsoc.org.uk

Northumbrian rocks and landscape

Images are Copyright Karen Atkinson and Colin Scrutton.

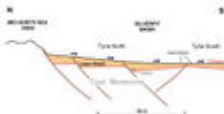
Attribution statement: Image from 'Northumbrian rocks and landscape: a field guide.' Yorkshire Geological Society 2004. www.yorksgeolsoc.org.uk

Carboniferous hydrocarbon resources: the southern North Sea and surrounding onshore areas
Images are Copyright Yorkshire Geological Society.

Attribution statement: Image from 'Carboniferous hydrocarbon geology.' Yorkshire Geological Society 2005. www.yorksgeolsoc.org.uk

File history

Click on a date/time to view the file as it appeared at that time.

Date/Time	Thumbnail	Dimensions	User	Comment
current 21:48, 14 August 2019		1,458 × 733 (118 KB)	Scotfot (talk contribs)	User created page with UploadWizard

- You cannot overwrite this file.

File usage

The following page links to this file:

- [Geological factors influencing gas production in the Tyne field \(Block 44/18a\), southern North Sea, and their impact on future infill well planning](#)

Metadata

This file contains additional information, probably added from the digital camera or scanner used to create or digitise it.

If the file has been modified from its original state, some details may not fully reflect the modified file.

Unique ID of original document 3BC147014D1B9237A1E10A8B1FDF4306

Date and time of digitising 11:16, 13 August 2019
File change date and time 12:18, 13 August 2019
Date metadata was last modified 12:18, 13 August 2019
IIM version 13,152

Retrieved from

http://earthwise.bgs.ac.uk/index.php?title=File:YGS_CHR_12_GEOL_FIG_09.jpg&oldid=42103

Categories:

- [License tags](#)
- [Uploaded with UploadWizard](#)

Navigation menu

Personal tools

- Not logged in
- [Talk](#)
- [Contributions](#)
- [Log in](#)
- [Request account](#)

Namespaces

- [File](#)
- [Discussion](#)

Variants

Views

- [Read](#)
- [Edit](#)
- [View history](#)
- [PDF Export](#)

More

Search

Navigation

- [Main page](#)

- [Recent changes](#)
- [Random page](#)
- [Help about MediaWiki](#)

Tools

- [What links here](#)
- [Related changes](#)
- [Special pages](#)
- [Permanent link](#)
- [Page information](#)
- [Browse properties](#)

• This page was last modified on 14 August 2019, at 21:48.

- [Privacy policy](#)
- [About Earthwise](#)
- [Disclaimers](#)

