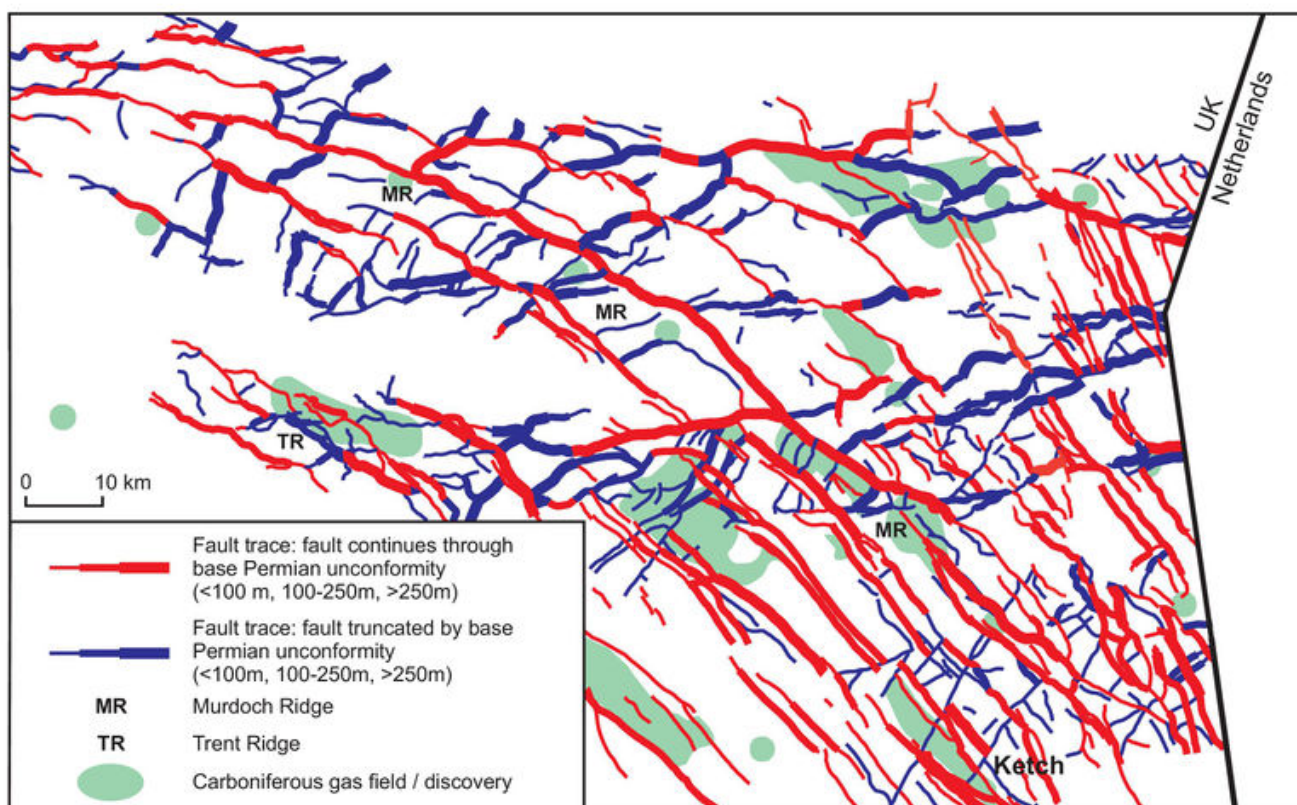


File:YGS CHR 14 REMA FIG 07.jpg

From Earthwise

[Jump to navigation](#) [Jump to search](#)

- [File](#)
- [File history](#)
- [File usage](#)
- [Metadata](#)



Size of this preview: [800 × 498 pixels](#). Other resolutions: [320 × 199 pixels](#) | [2,814 × 1,753 pixels](#).

[Original file](#) (2,814 × 1,753 pixels, file size: 1.38 MB, MIME type: image/jpeg)

Summary

description	<p>English: Figure 7 Intra-Carboniferous fault pattern in the southeast of the Carboniferous fairway.</p> <p>From: Carboniferous hydrocarbon resources: the southern North Sea and surrounding onshore areas, edited by J. D. Collinson, D. J. Evans, D. W. Holliday, N. S. Jones. Published as volume 7 in the Occasional Publications series of the Yorkshire Geological Society, Copyright Yorkshire Geological Society 2005.</p>
source	Yorkshire Geological Society
author	Don Cameron, Jim Munns, Sue Stoker

Licencing

{{subst:Custom license marker added by UW}}

Copyright for images in Yorkshire Geological Society publications on Earthwise is as follows:

Images may be reproduced free of charge for any non-commercial use in any format or medium provided it is reproduced accurately and not used in a misleading or derogatory context. Where any images on this site are being republished or copied to others, the source of the material must be identified and the copyright status acknowledged with the relevant attribution.

For all other uses of the images including commercial use please contact the Yorkshire Geological Society

Further copyright information for images from specific books and attribution statements: Yorkshire rocks and landscape

Images are Copyright Yorkshire Geological Society.

Attribution statement: Image from 'Yorkshire rocks and landscape: a field guide.' Yorkshire Geological Society 2006. www.yorksgeolsoc.org.uk

Northumbrian rocks and landscape

Images are Copyright Karen Atkinson and Colin Scrutton.

Attribution statement: Image from 'Northumbrian rocks and landscape: a field guide.' Yorkshire Geological Society 2004. www.yorksgeolsoc.org.uk

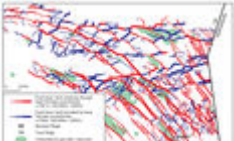
Carboniferous hydrocarbon resources: the southern North Sea and surrounding onshore areas

Images are Copyright Yorkshire Geological Society.

Attribution statement: Image from 'Carboniferous hydrocarbon geology.' Yorkshire Geological Society 2005. www.yorksgeolsoc.org.uk

File history

Click on a date/time to view the file as it appeared at that time.

Date/Time	Thumbnail	Dimensions	User	Comment
current 08:04, 15 August 2019		2,814 × 1,753 (1.38 MB)	Scotfot (talk contribs)	User created page with UploadWizard

- You cannot overwrite this file.

File usage

The following page links to this file:

- [Remaining hydrocarbon exploration potential of the Carboniferous fairway, UK southern North Sea](#)

Metadata

This file contains additional information, probably added from the digital camera or scanner used to create or digitise it.

If the file has been modified from its original state, some details may not fully reflect the modified file.

Unique ID of original document B3F8ACC436AE65F08088B997B70B078D

Date and time of digitising 17:48, 7 August 2019

File change date and time 12:30, 13 August 2019

Date metadata was last modified 12:30, 13 August 2019

IIM version 13,152

Retrieved from

http://earthwise.bgs.ac.uk/index.php?title=File:YGS_CHR_14_REMA_FIG_07.jpg&oldid=42124

Categories:

- [License tags](#)
- [Uploaded with UploadWizard](#)

Navigation menu

Personal tools

- Not logged in
- [Talk](#)
- [Contributions](#)
- [Log in](#)
- [Request account](#)

Namespaces

- [File](#)
- [Discussion](#)

Variants

Views

- [Read](#)
- [Edit](#)
- [View history](#)
- [PDF Export](#)

More

Search

Navigation

- [Main page](#)
- [Recent changes](#)
- [Random page](#)
- [Help about MediaWiki](#)

Tools

- [What links here](#)
- [Related changes](#)
- [Special pages](#)
- [Permanent link](#)
- [Page information](#)
- [Browse properties](#)

• This page was last modified on 15 August 2019, at 08:04.

- [Privacy policy](#)
- [About Earthwise](#)
- [Disclaimers](#)

