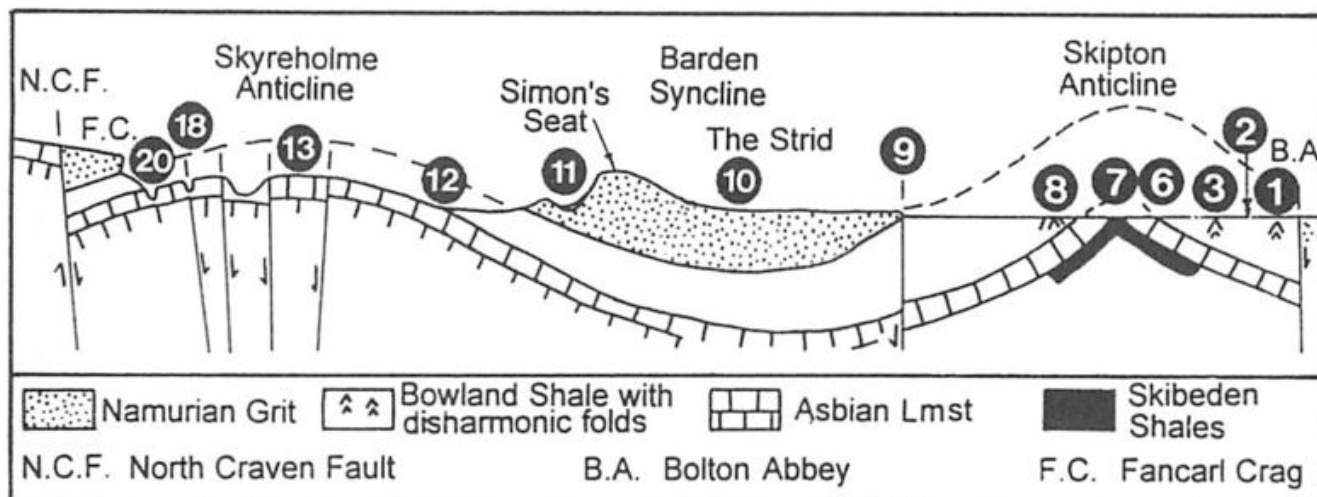


# File:YGS YORKROCK FIG 06 01B.jpg

From Earthwise

[Jump to navigation](#) [Jump to search](#)

- [File](#)
- [File history](#)
- [File usage](#)



Size of this preview: [800 × 313 pixels](#). Other resolutions: [320 × 125 pixels](#) | [1,186 × 464 pixels](#).

[Original file](#) (1,186 × 464 pixels, file size: 149 KB, MIME type: image/jpeg)

## Summary

<b>description</b>	<b>English:</b> Figure 6.1 (b) Geological section of the area between Bolton Abbey and the North Craven Fault. Scrutton, Colin and Powell, John, Editors. <a href="#">Yorkshire rocks and landscape: a field guide</a> . 2006. 3rd edition. Published by the <a href="#">Yorkshire Geological Society</a> . Copyright <a href="#">Yorkshire Geological Society</a> .
<b>source</b>	Yorkshire Geological Society
<b>author</b>	Yorkshire Geological Society

## Licencing

{{subst:Custom license marker added by UW}}

## Copyright for images in Yorkshire Geological Society publications on Earthwise is as follows:

Images may be reproduced free of charge for any non-commercial use in any format or medium provided it is reproduced accurately and not used in a misleading or derogatory context. Where any images on this site are being republished or copied to others, the source of the material must be identified and the copyright status acknowledged with the relevant attribution.

For all other uses of the images including commercial use please contact the Yorkshire Geological Society

### Further copyright information for images from specific books and attribution statements: Yorkshire rocks and landscape

Images are Copyright Yorkshire Geological Society.

Attribution statement: Image from 'Yorkshire rocks and landscape: a field guide.' Yorkshire Geological Society 2006. [www.yorksgeolsoc.org.uk](http://www.yorksgeolsoc.org.uk)

### Northumbrian rocks and landscape

Images are Copyright Karen Atkinson and Colin Scrutton.

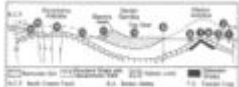
Attribution statement: Image from 'Northumbrian rocks and landscape: a field guide.' Yorkshire Geological Society 2004. [www.yorksgeolsoc.org.uk](http://www.yorksgeolsoc.org.uk)

Carboniferous hydrocarbon resources: the southern North Sea and surrounding onshore areas  
Images are Copyright Yorkshire Geological Society.

Attribution statement: Image from 'Carboniferous hydrocarbon geology.' Yorkshire Geological Society 2005. [www.yorksgeolsoc.org.uk](http://www.yorksgeolsoc.org.uk)

## File history

Click on a date/time to view the file as it appeared at that time.

Date/Time	Thumbnail	Dimensions	User	Comment
current <a href="#">21:52, 4 August 2019</a>		1,186 × 464 (149 KB)	<a href="#">Scotfot (talk   contribs)</a>	User created page with UploadWizard

- You cannot overwrite this file.

## File usage

The following page links to this file:

- [Dinantian and Namurian rocks of Bolton Abbey and Trollers Gill - an excursion](#)

Retrieved from

'[http://earthwise.bgs.ac.uk/index.php?title=File:YGS\\_YORKROCK\\_FIG\\_06\\_01B.jpg&oldid=41705](http://earthwise.bgs.ac.uk/index.php?title=File:YGS_YORKROCK_FIG_06_01B.jpg&oldid=41705)'

Categories:

- [License tags](#)
- [Uploaded with UploadWizard](#)

## Navigation menu

## Personal tools

- Not logged in
- [Talk](#)
- [Contributions](#)
- [Log in](#)
- [Request account](#)

## Namespaces

- [File](#)
- [Discussion](#)

## Variants

## Views

- [Read](#)
- [Edit](#)
- [View history](#)
- [PDF Export](#)

## More

## Search

## Navigation

- [Main page](#)
- [Recent changes](#)
- [Random page](#)
- [Help about MediaWiki](#)

## Tools

- [What links here](#)
- [Related changes](#)
- [Special pages](#)
- [Permanent link](#)
- [Page information](#)
- [Browse properties](#)

- This page was last modified on 4 August 2019, at 21:52.

- [Privacy policy](#)
- [About Earthwise](#)
- [Disclaimers](#)

