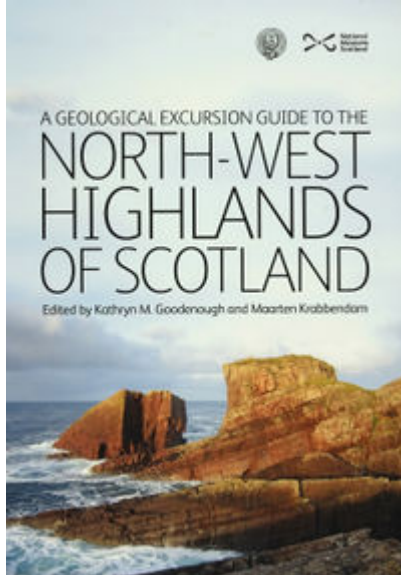


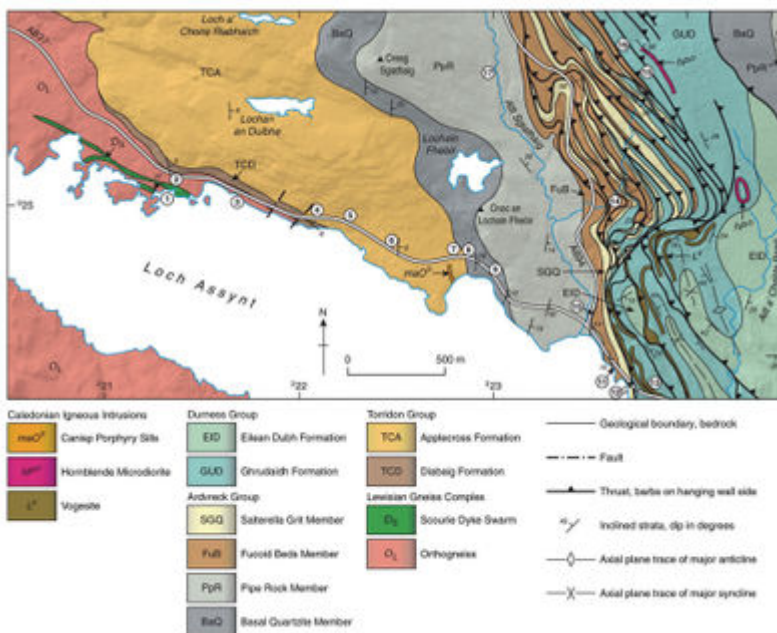
# Loch Assynt and the Achmore Duplex, North-west Highlands - an excursion

From Earthwise

[Jump to navigation](#) [Jump to search](#)



Buy the book [EGS](#). Also available from Amazon



Geological map of the Loch Assynt area, after British Geological Survey (2007), showing the localities described in Excursion 1.

**Excursion by Paul Smith and Robert Raine**

**Excursion 1 from: Goodenough, Kathryn M. and Krabbendam, Maarten (Editors) [A geological excursion guide to the North-west Highlands of Scotland](#). Edinburgh : Edinburgh Geological Society in association with NMS Enterprises Limited, 2011.**

<b>Purpose</b>	To examine the stratigraphy and sedimentology of the foreland succession and the lower part of the Achmore Duplex, and to study the structural architecture of the duplex. A good general introduction for any party visiting the North-west Highlands.
<b>Aspects covered</b>	Clastic and carbonate sedimentology, Precambrian-Lower Cambrian stratigraphy, structural geology of duplexes.
<b>Maps</b>	OS: 1:50,000 Landranger sheet 15 Loch Assynt; 1:25,000 Explorer sheet 442 Assynt and Lochinver. BGS: 1:50,000 special sheet, Assynt district.
<b>Terrain</b>	Roadside outcrops on the first part of the itinerary; rough but low moorland and stream sections for the second half of the excursion. No part of the excursion is more than 500m from the road. There are a number of lay-bys at which it is possible to park, but the roadside part of the excursion is most easily accomplished by walking along the road, paying due attention to the traffic.
<b>Time</b>	The two halves of the trip divide conveniently into separate half-day excursions or a single full day.
<b>Access</b>	There are no access constraints for this excursion, although care should be taken at roadside stops. Please note that this is a very popular excursion, and that the outcrops should not be hammered.

There are two parts to this excursion:

## [Excursion 1A: The foreland succession of the Loch Assynt roadside](#)

## [Excursion 1B: The stratigraphy and structure of the Achmore Duplex and adjacent foreland](#)

## [References](#)

At all times follow: [The Scottish Access Code](#) and [Code of conduct for geological field work](#)

Retrieved from

[http://earthwise.bgs.ac.uk/index.php?title=Loch\\_Assynt\\_and\\_the\\_Achmore\\_Duplex,\\_North-west\\_Highlands\\_-\\_an\\_excursion&oldid=24139](http://earthwise.bgs.ac.uk/index.php?title=Loch_Assynt_and_the_Achmore_Duplex,_North-west_Highlands_-_an_excursion&oldid=24139)

[Category:](#)

- [2. Northern Highlands](#)

## **Navigation menu**

### **Personal tools**

- Not logged in
- [Talk](#)
- [Contributions](#)

- [Log in](#)
- [Request account](#)

## Namespaces

- [Page](#)
- [Discussion](#)

## Variants

## Views

- [Read](#)
- [Edit](#)
- [View history](#)
- [PDF Export](#)

## More

## Search

## Navigation

- [Main page](#)
- [Recent changes](#)
- [Random page](#)
- [Help about MediaWiki](#)

## Tools

- [What links here](#)
- [Related changes](#)
- [Special pages](#)
- [Permanent link](#)
- [Page information](#)
- [Cite this page](#)
- [Browse properties](#)

- This page was last modified on 19 December 2015, at 23:43.

- [Privacy policy](#)
- [About Earthwise](#)
- [Disclaimers](#)

