

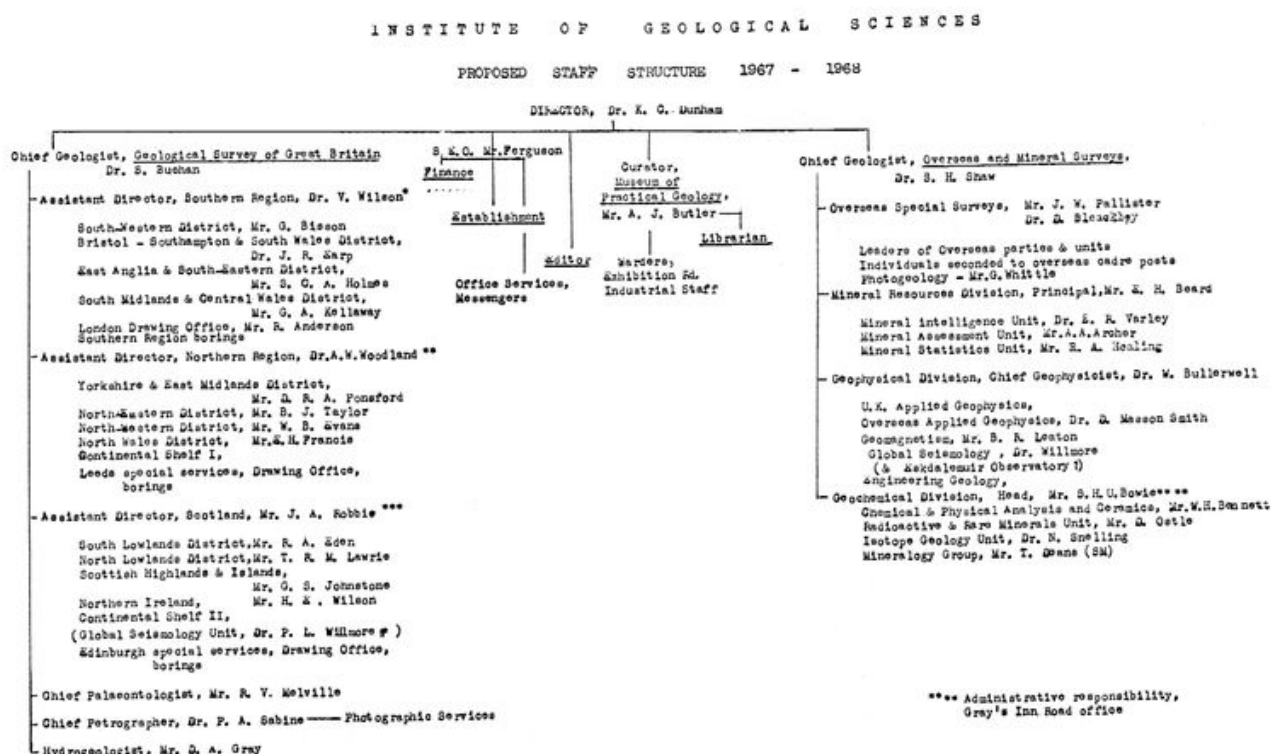
New structure for the IGS introduced on 1 August 1967

From Earthwise

[Jump to navigation](#) [Jump to search](#)

From: Hackett, Dennis. 1999. [Our corporate history. Key events affecting the British Geological Survey, 1967-1998.](#) British Geological Survey. Technical Report, WQ/99/1.

Institute of Geological Sciences. Proposed staff structure 1967-1968.



Retrieved from

http://earthwise.bgs.ac.uk/index.php?title=New_structure_for_the_IGS_introduced_on_1_August_1967&oldid=42798

Category:

- [History of the British Geological Survey](#)

Navigation menu

Personal tools

- Not logged in

- [Talk](#)
- [Contributions](#)
- [Log in](#)
- [Request account](#)

Namespaces

- [Page](#)
- [Discussion](#)

Variants

Views

- [Read](#)
- [Edit](#)
- [View history](#)
- [PDF Export](#)

More

Search

Navigation

- [Main page](#)
- [Recent changes](#)
- [Random page](#)
- [Help about MediaWiki](#)

Tools

- [What links here](#)
- [Related changes](#)
- [Special pages](#)
- [Permanent link](#)
- [Page information](#)
- [Cite this page](#)
- [Browse properties](#)

- This page was last modified on 24 September 2019, at 21:29.
- [Privacy policy](#)

- [About Earthwise](#)
- [Disclaimers](#)

