

# OR/14/024 Modelled volume, purpose and scale

From Earthwise

[Jump to navigation](#) [Jump to search](#)

TERRINGTON R L, WILLIAMSON J P. 2014. Metadata report for the Craven Basin 1:250 000 resolution geological model. *British Geological Survey Internal Report*, OR/14/024.

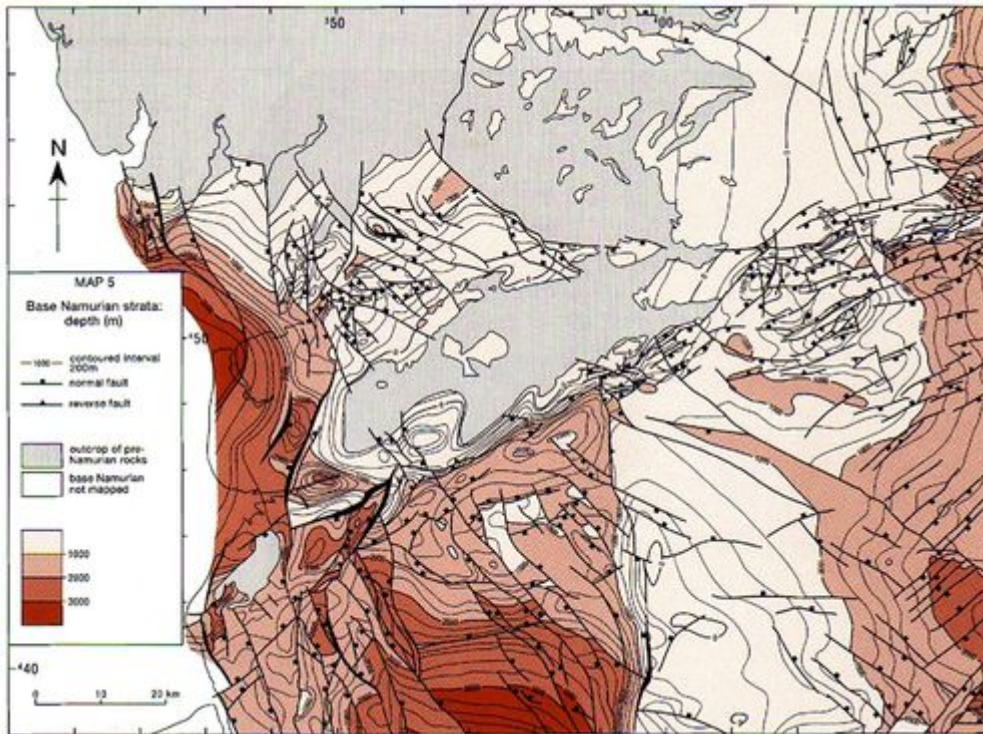


**Figure 1** Modelled area (in blue)

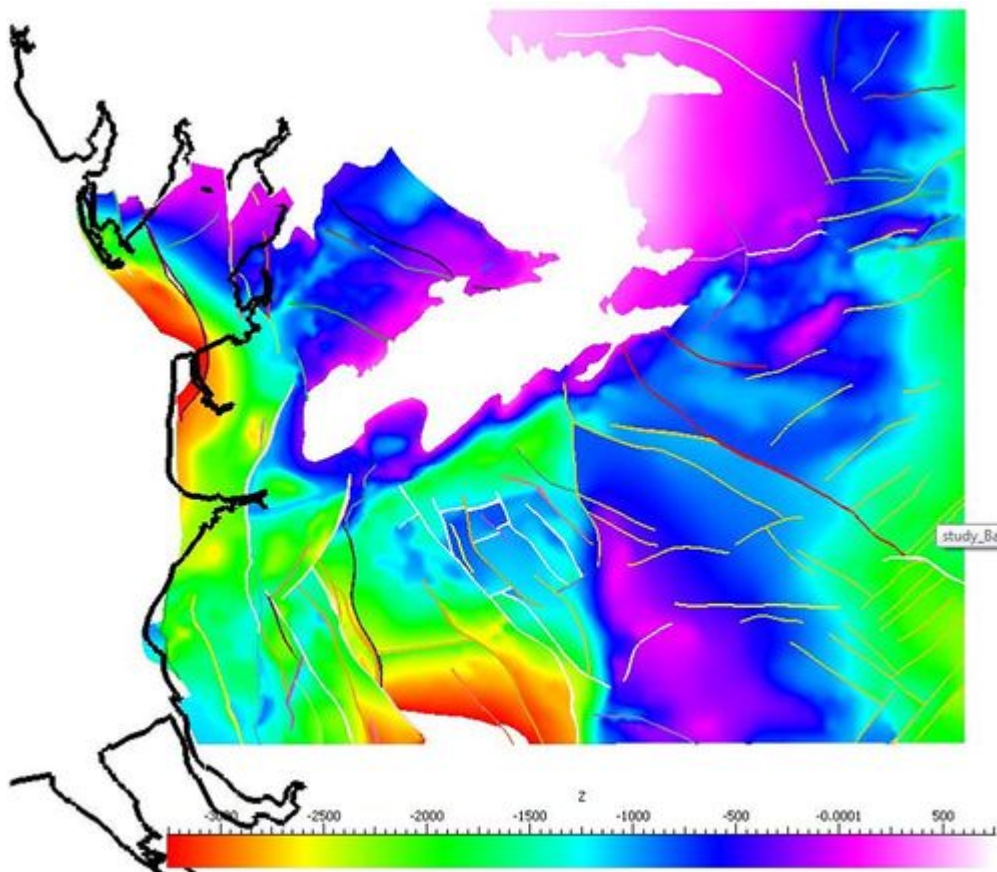
This is a faulted GOCAD® regional model extending onshore across Yorkshire, Lancashire and the southern part of Cumbria (Figure 1). The model was constructed from digital data compiled for the Craven Basin Subsurface Memoir (Kirby et al., 2000<sup>[1]</sup>). The results of the study are contained in the 1:625 000 scale structure contour (Figures 2), preserved thickness and subcrop maps and that accompany the Subsurface Memoir, so the data and model generated is regional to national in scale.

The model was developed as part of the Regional UK Lithoframe Programme, the aim of which was to convert the structural data interpreted in the subsurface memoirs into 3D models. Other models in this series include the Northumberland and Solway Basin, East Midlands, Cheshire Basin and Weald Basin models. The Craven Basin model provides an understanding of the regional bedrock structure in the North West and Central part of England (particularly for the Carboniferous rocks) and extends from +600 to -7500m OD. The structure of the Lower Palaeozoic and older basement rocks in the region are not considered in this model.

As the Craven Basin was derived from digital data compiled for the Regional Subsurface Memoir series, tasks such as drawing seismic interpretation to well control have already been performed. This document describes the process of creating a GOCAD model from derived digital contour data as shown in the shaded Base Namurian surface in Figure 3.



**Figure 2** An example structural contour map of the Base Namurian Strata from the Craven Basin Subsurface Memoir.



**Figure 3** Modelled Base Namurian Surface with the coastline in black (depth range in metres).

## Reference

1. [↑](#) KIRBY, G A, BAILY, H E, CHADWICK, R A, EVANS, D A, HOLLIDAY, D J, HOLLOWAY, S,

HULBERT, A G, PHAROAH, T C, SMITH, N J P, AITKENHEAD, N, and BIRCH, B. 2000. The Structure and Evolution of the Craven Basin and adjacent areas. *Subsurface Memoir of the British Geological Survey*.

Retrieved from

'[http://earthwise.bgs.ac.uk/index.php?title=OR/14/024\\_Modelled\\_volume,\\_purpose\\_and\\_scale&oldid=20560](http://earthwise.bgs.ac.uk/index.php?title=OR/14/024_Modelled_volume,_purpose_and_scale&oldid=20560)'

Category:

- [OR/14/024 Metadata report for the Craven Basin 1:250 000 resolution geological model](#)

## Navigation menu

### Personal tools

- Not logged in
- [Talk](#)
- [Contributions](#)
- [Log in](#)
- [Request account](#)

### Namespaces

- [Page](#)
- [Discussion](#)

### Variants

### Views

- [Read](#)
- [View source](#)
- [View history](#)
- [PDF Export](#)

### More

### Search

### Navigation

- [Main page](#)
- [Recent changes](#)

- [Random page](#)
- [Help about MediaWiki](#)

## Tools

- [What links here](#)
- [Related changes](#)
- [Special pages](#)
- [Permanent link](#)
- [Page information](#)
- [Cite this page](#)
- [Browse properties](#)

• This page was last modified on 7 August 2015, at 15:47.

- [Privacy policy](#)
- [About Earthwise](#)
- [Disclaimers](#)

