

OR/14/029 Rockhead elevation model

From Earthwise

[Jump to navigation](#) [Jump to search](#)

H Burke, S J Mathers, J P Williamson, S Thorpe, J Ford and R L Terrington. 2014. *The London Basin superficial and bedrock LithoFrame 50 Model*. Nottingham, UK, British geological Survey.

A rockhead elevation surface derived from the combined base of all modelled superficial and artificial units has an elevation range of +254.87 m OD to -25.24 m OD (Figure 13). This rockhead elevation surface has a cell size of 100 m and caps the bedrock part of the geological model. It was generated by calculating in GSI3D using the complete superficial and anthropocene model on a tile by tile basis, buffering each area by 200 m to ensure a small overlap. The resulting rockhead surfaces were combined into the single surface in GIS. Where modelled anthropocene and/or superficial deposits are absent, this rockhead elevation surface corresponds to the Digital Terrain Model. This surface was calculated in GSi3D and exported to GOCAD® in order to cap the model of the faulted bedrock units.

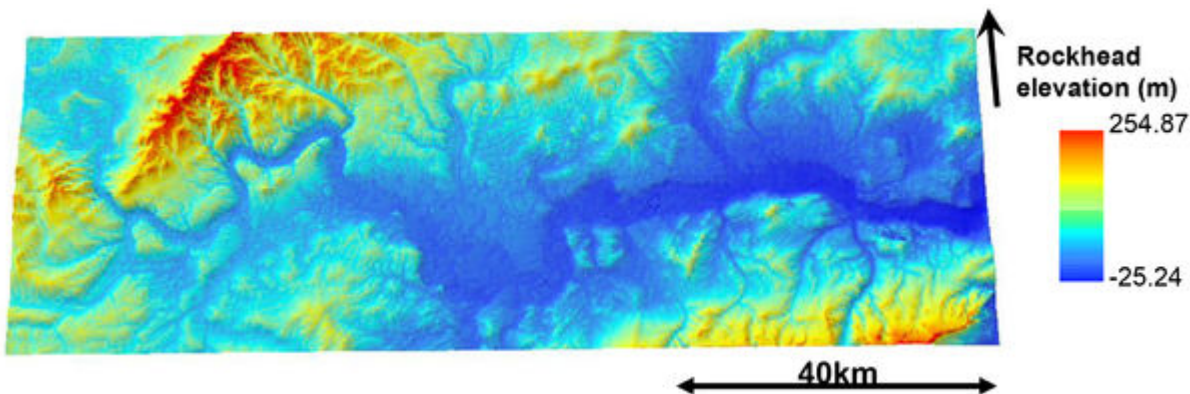


Figure 13 3D view of the calculated rockhead elevation surface calculated as an ascii grid with a 100 m cell size. The highest elevations are in red and the lowest in blue, vertical exaggeration is x 10.

Retrieved from

http://earthwise.bgs.ac.uk/index.php?title=OR/14/029_Rockhead_elevation_model&oldid=20630
Category:

- [OR/14/029 The London Basin superficial and bedrock LithoFrame 50 model](#)

Navigation menu

Personal tools

- Not logged in
- [Talk](#)
- [Contributions](#)
- [Log in](#)
- [Request account](#)

Namespaces

- [Page](#)
- [Discussion](#)

Variants

Views

- [Read](#)
- [View source](#)
- [View history](#)
- [PDF Export](#)

More

Search

Navigation

- [Main page](#)
- [Recent changes](#)
- [Random page](#)
- [Help about MediaWiki](#)

Tools

- [What links here](#)
- [Related changes](#)
- [Special pages](#)
- [Permanent link](#)
- [Page information](#)
- [Cite this page](#)
- [Browse properties](#)

- This page was last modified on 10 August 2015, at 11:40.

- [Privacy policy](#)
- [About Earthwise](#)
- [Disclaimers](#)

